

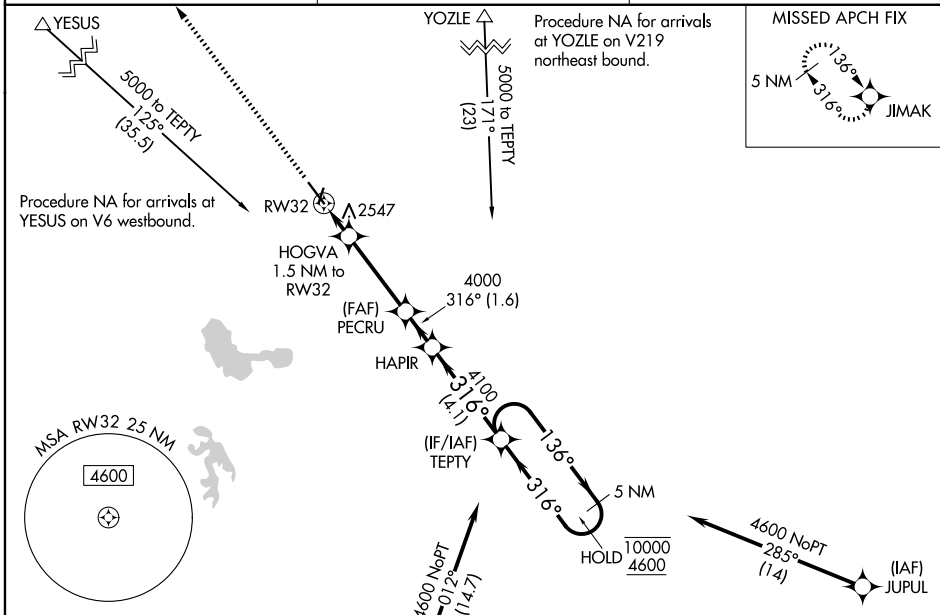
WAAS CH <b>49003</b> <b>W32A</b>	APP CRS <b>316°</b>	Rwy Ldg TDZE Apt Elev <b>5489</b> <b>2408</b> <b>2413</b>
--	------------------------	--

# RNAV (GPS) RWY 32

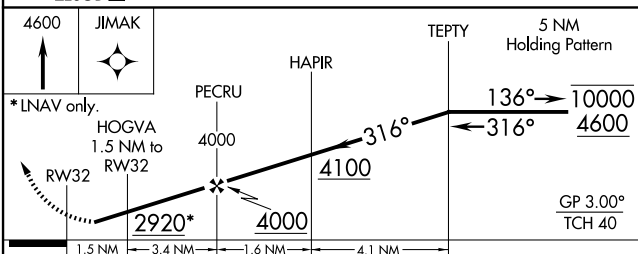
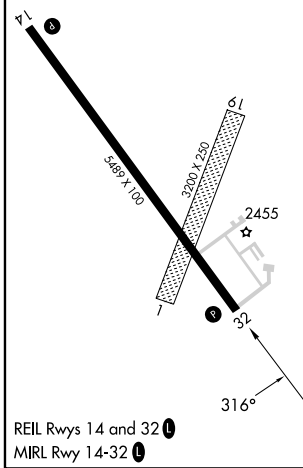
JIM KELLY FLD (LXN)

RNP APCH.	MISSED APPROACH: Climb to 4600 direct JIMAK and hold.
<p><b>⚠</b> Circling NA to Rwys 1 and 19. Rwy 32 helicopter visibility reduction below <math>\frac{3}{4}</math> SM NA. For uncompensated Baro-VNAV systems, LNAV/VNAV NA below -21°C or above 54°C.</p>	

AWOS-3 <b>121.025</b>	DENVER CENTER <b>132.7 226.675</b>	UNICOM <b>123.0 (CTAF)</b>
--------------------------	---------------------------------------	-------------------------------



ELEV <b>2413</b>	TDZE <b>2408</b>
------------------	------------------



CATEGORY	A	B	C	D
LPV DA	2658-1		250 (300-1)	
LNAV/VNAV DA	2708-1		300 (300-1)	
LNAV MDA	2800-1 392 (400-1)		2800-1½ 392 (400-1½)	
CIRCLING	2860-1 447 (500-1)	2940-1 527 (600-1)	2940-1½ 527 (600-1½)	2980-2 567 (600-2)

NC-2, 16 APR 2026 to 14 MAY 2026

NC-2, 16 APR 2026 to 14 MAY 2026