

OXNARD, CALIFORNIA

HI-TACAN Z RWY 21

POINT MUGU NAS
(NAVAL BASE VENTURA CO) (KNTD)

TACAN NTD Chan 43	APCH CRS 216°	Rwy ldg 11,102 TDZE 13 Arprt Elev 13
-----------------------------	-------------------------	---

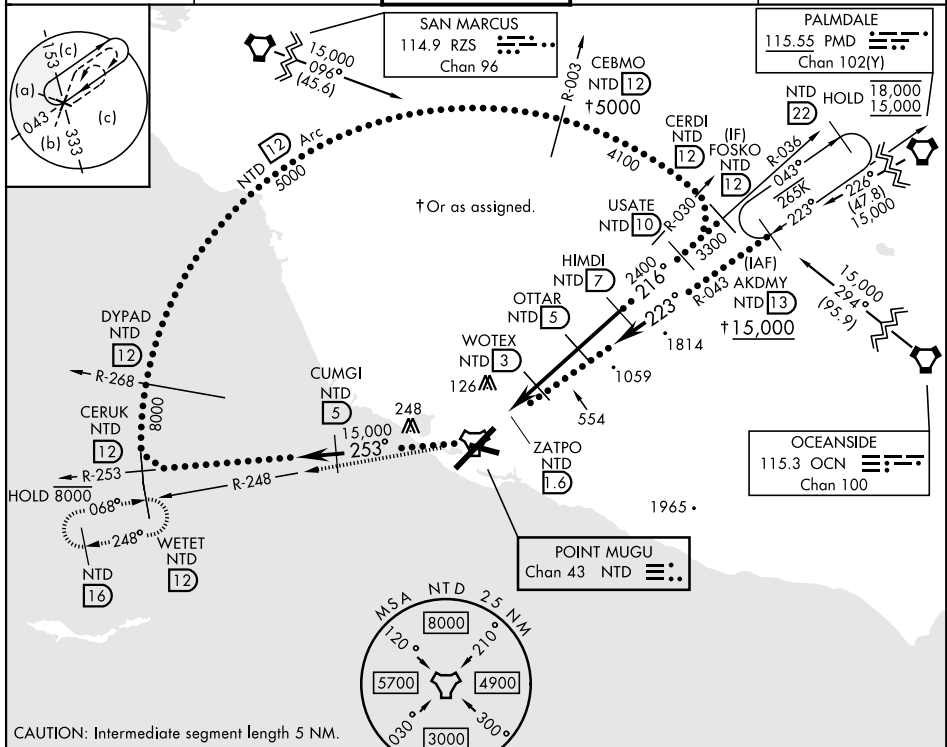
[USN]



MISSED APPROACH: Climb to 5000 via NTD TACAN R-036 to NTD, then via NTD R-248 to WETET and hold, continue climb-in-hold to 5000.

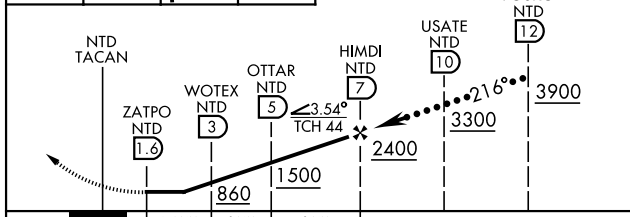
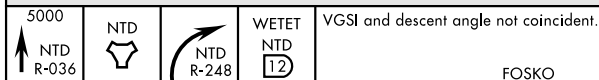
★ When ALS inop, increase vis to 1 1/2 miles.
★★ Circling not authorized E of Rwy 3-21.

ATIS ★ 125.55 363.05	APP CON ★ 128.65 307.275	TOWER ★ 124.85 290.375	GND CON 121.6 360.2	ASR/PAR
--------------------------------	------------------------------------	----------------------------------	-------------------------------	---------



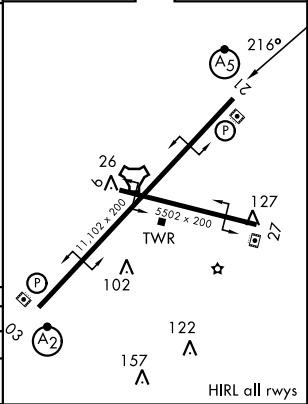
CAUTION: Intermediate segment length 5 NM.

EMERG SAFE ALT 100 NM 12,100



CATEGORY	C	D	E
S-21*	480-1	467 (500-1)	
CIRCLING**	480-1 1/2 467 (500-1 1/2)	580-2 567 (600-2)	860-3 847 (900-3)

ELEV	13	TDZE	13
------	----	------	----



OXNARD, CALIFORNIA

34°07'N-119°07'W

POINT MUGU NAS
(NAVAL BASE VENTURA CO)

HI-TACAN Z RWY 21

Amdt 4 31DEC20

SW-3, 16 APR 2026 to 14 MAY 2026

SW-3, 16 APR 2026 to 14 MAY 2026