

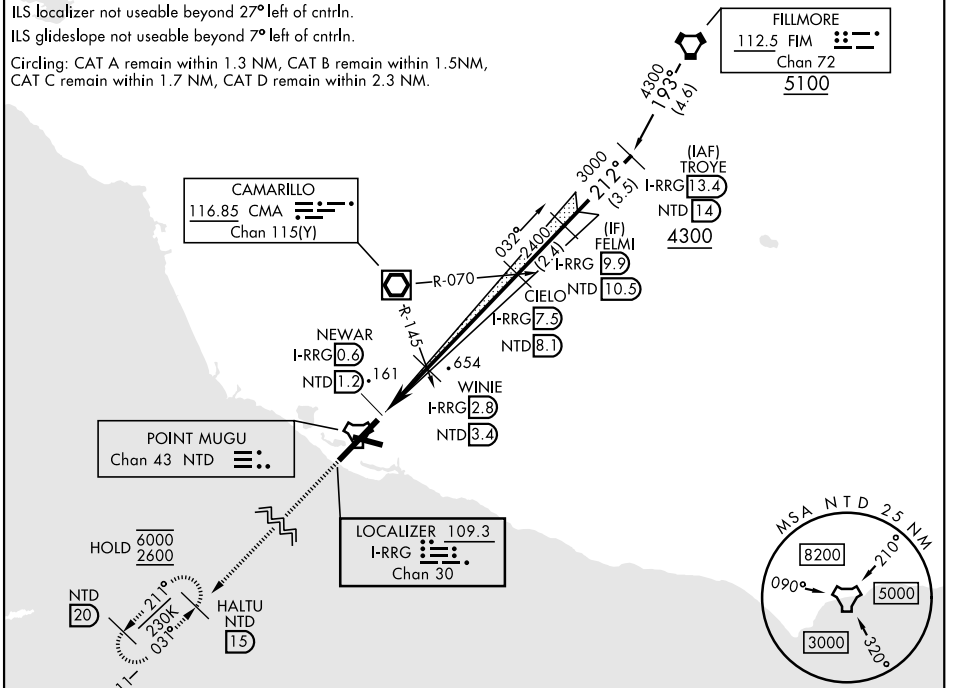
OXNARD, CALIFORNIA

ILS or LOC RWY 21

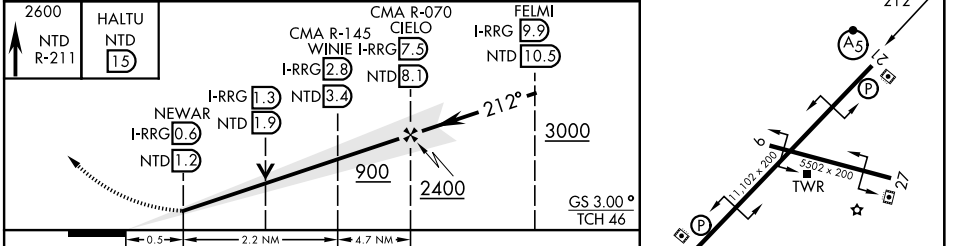
LOC/DME I-RRG 109.3 Chan 30	APCH CRS 212°	Rwy Idg 11,102 TDZE 13 Arpt Elev 13	[USN] POINT MUGU NAS (NAVAL BASE VENTURA CO) (KNTD)
---	-------------------------	--	---

DME or RADAR required		MALSR (A5)	MISSED APPROACH: Climb to 2600 on NTD TACAN R-211 to HALTU and hold.	
<p>*When ALS inop, increase vis to 3/4 mile. **When ALS inop, increase CAT AB vis to 1 mile, CAT CDE vis to 1 1/2 miles. ***Circling not authorized SE of Rwy 3-21.</p>				

ATIS ★ 125.55 363.05	APP CON ★ 128.65 307.275	TOWER ★ 124.85 290.375	GND CON 121.6 360.2	ASR/PAR
--------------------------------	------------------------------------	----------------------------------	-------------------------------	---------



EMERG SAFE ALT 100 NM 12,300	ELEV 13	TDZE 13
------------------------------	---------	---------



CATEGORY	A	B	C	D	E
S-ILS 21 *	213 - 1/2		200 (200-1/2)		
S-LOC 21 **	420 - 1/2	407 (500-1/2)	420-3/4		407 (500-3/4)
CIRCLING***	420-1 407 (500-1)	520-1 507 (600-1)	520-1 1/2 507 (600-1 1/2)	580-2 567 (600-2)	NOT AUTHORIZED

OXNARD, CALIFORNIA 34° 07'N - 119° 07'W POINT MUGU NAS (NAVAL BASE VENTURA CO) (KNTD)

Orig 27NOV25

ILS or LOC RWY 21

SW-3, 16 APR 2026 to 14 MAY 2026

SW-3, 16 APR 2026 to 14 MAY 2026