

SAN MARCUS ONE DEPARTURE (RZS 1 • RZS)

POINT MUGU NAS (NAVAL BASE VENTURA CO) (KNTD)
OXNARD, CALIFORNIA

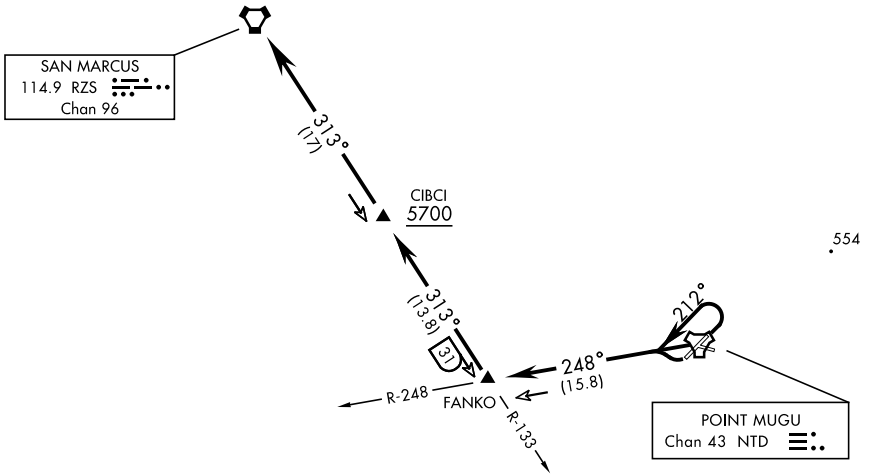
ATIS ★ 125.55 363.05
TOWER ★
124.85 290.375
DEP CON ★
128.65 307.275

[USN] TACAN required

Rwy	Knots	60	120	180	240	300	360
* 03 (C)	V/V(fpm)	205	410	615	820	1025	1230
† 21 (B)	V/V(fpm)	216	432	648	864	1080	1296
† 27 (B)	V/V(fpm)	214	428	642	856	1070	1284

* Minimum † ATC Climb Rate

(C) to 700
(B) to 8900



SW-3, 16 APR 2026 to 14 MAY 2026

SW-3, 16 APR 2026 to 14 MAY 2026



DEPARTURE ROUTE DESCRIPTION

TAKEOFF RWY 3: Climbing left turn to 212° within 3 DME of NTD TACAN, thence...

TAKEOFF RWY 21: Turn right, thence...

TAKEOFF RWY 27: Turn left, thence...

...intercept NTD R-248 and via NTD R-248 to FANKO (NTD R-248/16 DME), then via RZS VORTAC R-133 to RZS VORTAC, then via assigned routing. Cross CIBCI (RZS R-133/17 DME) at or above 5700.

SAN MARCUS ONE DEPARTURE (RZS 1 • RZS)

Amdt 1 19MAY22

OXNARD, CALIFORNIA

POINT MUGU NAS (NAVAL BASE VENTURA CO) (KNTD)