

OXNARD, CALIFORNIA

TACAN Z RWY 3

POINT MUGU NAS
(NAVAL BASE VENTURA CO)(KNTD)

TACAN NTD Chan 43	APCH CRS 026°	Rwy Idg 11,102 TDZE 10 Arprt Elev 13
----------------------	------------------	--

[USN]

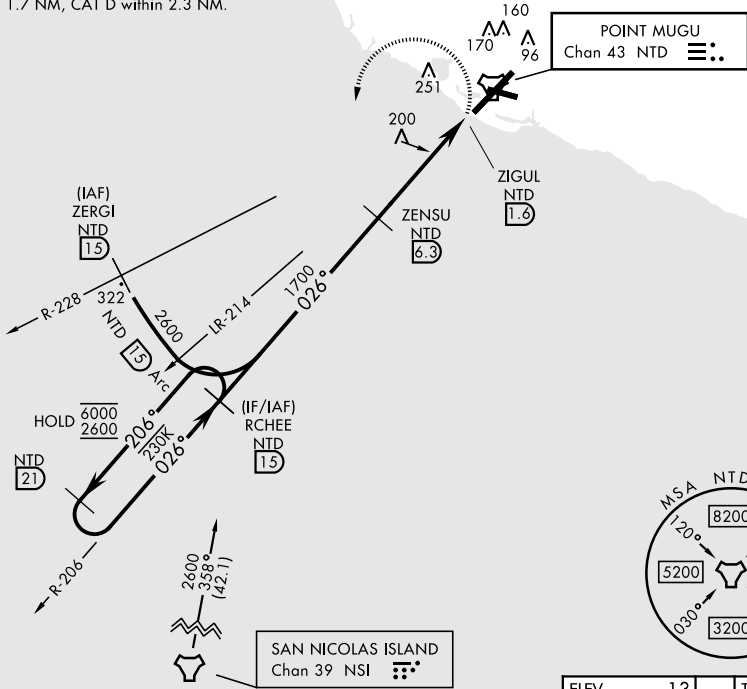
▼ *When ALS inop, increase CAT AB vis to 1 mile, CAT CDE vis to 1¾ miles.



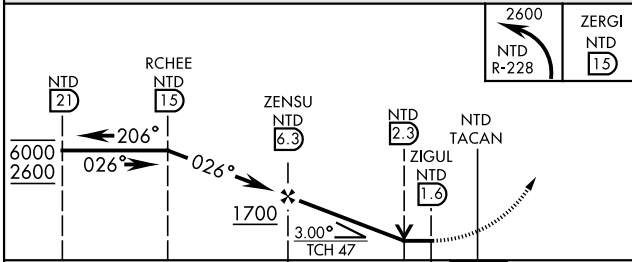
MISSED APPROACH: Climbing left turn to 2600 and intercept NTD TACAN R-228 to ZERGI, arc SW of NTD on the 15 DME arc to RCHEE and hold.

ATIS ★ 125.55 363.05	APP CON ★ 128.65 307.275	TOWER ★ 124.85 290.375	GND CON 121.6 360.2	ASR/PAR
-------------------------	-----------------------------	---------------------------	------------------------	---------

**Circling not authorized SE of Rwy 3-21. Circling CAT A remain within 1.3 NM, CAT B within 1.5 NM, Cat C within 1.7 NM, CAT D within 2.3 NM.

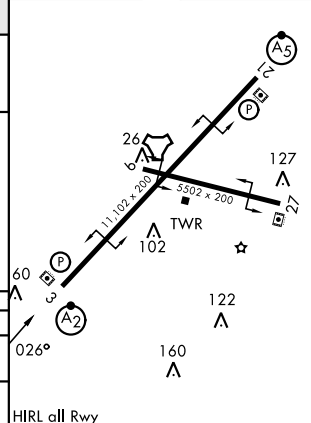


EMERG SAFE ALT 100 NM 12,300



CATEGORY	A	B	C	D	E
S-3 *	600-¾ 590 (600-¾)		600-1¾ 590 (600-1¾)		
CIRCLING **	600-1 587 (600-1)		600-1¾ 587 (600-1¾)	600-2 587 (600-2)	NA

ELEV	13	TDZE	10
------	----	------	----



HIRL all Rwy

OXNARD, CALIFORNIA
Amdt 4 04SEP25

34°07'N-119°07'W

TACAN Z RWY 3

SW-3, 16 APR 2026 to 14 MAY 2026