

WAAS CH <b>77915</b> <b>W08A</b>	APP CRS <b>077°</b>	Rwy Idg TDZE <b>399</b> Apt Elev <b>403</b>	<b>6118</b>
--	------------------------	---	-------------

# RNAV (GPS) RWY 8

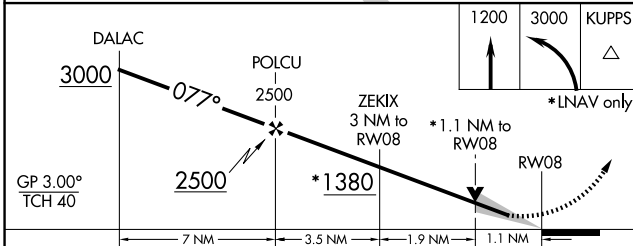
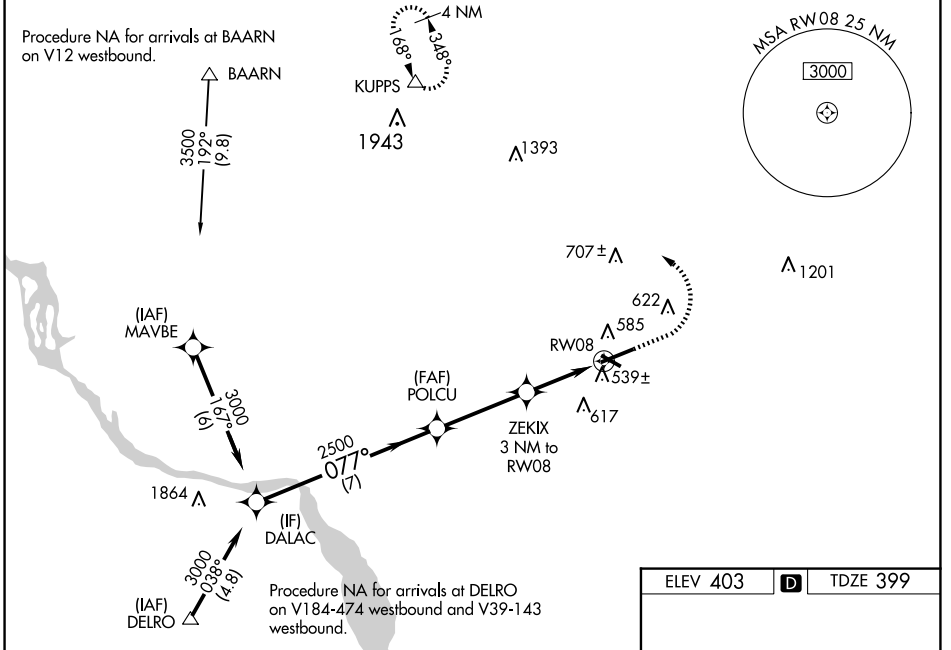
LANCASTER (LNS)

For uncompensated Baro-VNAV systems, LNAV/VNAV NA below -15°C (5°F) or above 54°C (130°F). DME/DME RNP-0.3 NA. When local altimeter setting not received, use Harrisburg Intl altimeter setting and increase all DA 64 feet and all MDA 80 feet, increase LNAV/VNAV all Cats visibility 1/4 mile, LNAV and Circling Cats C and D visibility 1/4 mile. Baro-VNAV and VDP NA when using Harrisburg Intl altimeter setting. Night landing: Rwy 13, 31 NA. For inoperative MALS R increase LNAV/VNAV all Cats visibility to 1 1/4 mile, and LNAV Cats C/D visibility to 1 1/8 mile. For inoperative MALS R when using Harrisburg Intl altimeter setting, increase LPV all Cats visibility to 1/2 mile, LNAV/VNAV all Cats visibility to 1 1/2 mile and LNAV Cats C/D visibility to 1 1/8 mile.

**MALS R**

**MISSED APPROACH:**  
Climb to 1200 then climbing left turn to 3000 direct KUPPS and hold.

ATIS <b>125.675</b>	HARRISBURG APP CON <b>126.45 281.525</b>	<b>LANCASTER TOWER *</b> <b>120.9 (CTAF) 251.1</b>	GND CON <b>121.8</b>	UNICOM <b>122.95</b>
------------------------	---	---	-------------------------	-------------------------



ELEV 403 **D** TDZE 399

Diagram of RWY 8 showing MALS R, TW R 476, and various navigation aids. Includes a note for 0.3% UP.

REIL Rwy 31 **1**  
HIRL Rwy 8-26 **1**  
MIRL Rwy 13-31 **1**

CATEGORY	A	B	C	D
LPV DA	599-1/2		200 (200-1/2)	
LNAV/VNAV DA	784-7/8		385 (400-7/8)	
LNAV MDA	800-1/2	401 (400-1/2)	800-3/4	401 (400-3/4)
CIRCLING	940-1	537 (600-1)	960-1 1/2	1060-2
			557 (600-1 1/2)	657 (700-2)

NE-4, 16 APR 2026 to 14 MAY 2026

NE-4, 16 APR 2026 to 14 MAY 2026