

VOR/DME LRP 117.3 Chan 120	APP CRS 247°	Rwy Ldg 6118 TDZE 384 Apt Elev 403
--	------------------------	--

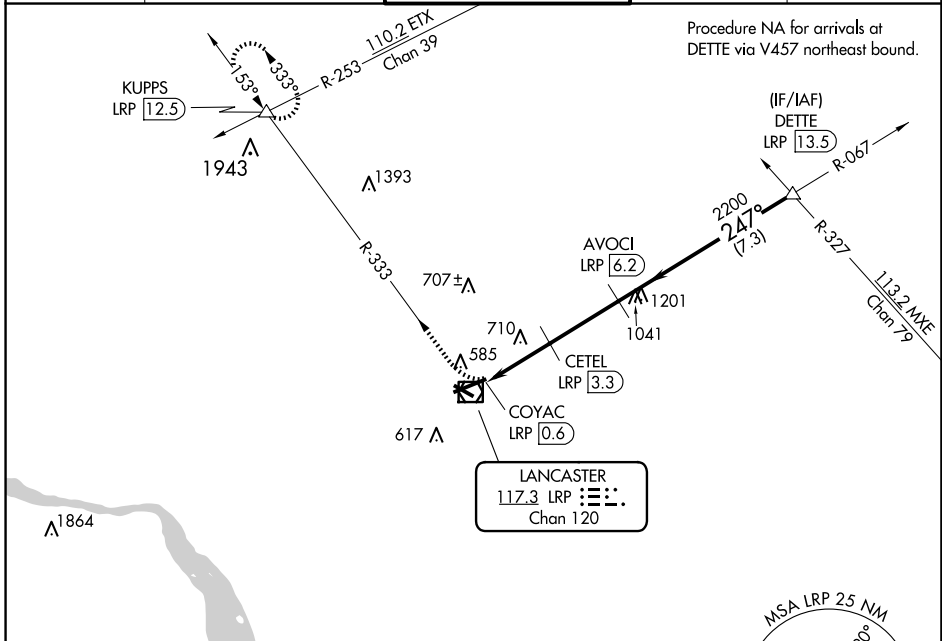
VOR/DME RWY 26

LANCASTER (LNS)

⚠ Night landing: Rwy 13, 31 NA. Helicopter visibility reduction below 3/4 SM NA.
⚠ When local altimeter setting not received, use Harrisburg Intl altimeter setting and increase all MDA 80 feet and S-26 and Circling Cats C and D visibility 1/4 mile.

MISSED APPROACH: Climbing right turn to 3000 via LRP VOR/DME R-333 to KUPPS INT/LRP 12.5 DME and hold.

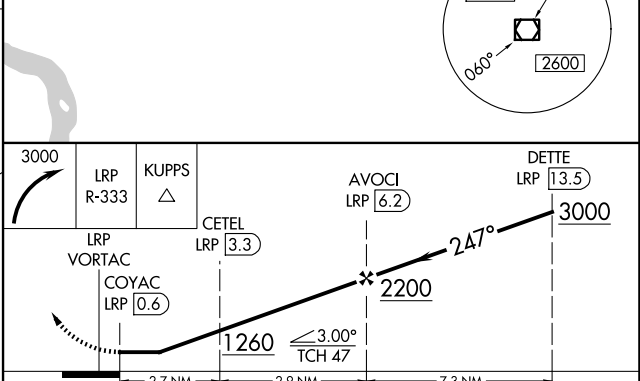
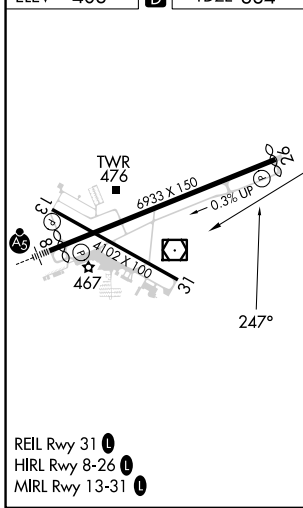
ATIS 125.675	HARRISBURG APP CON 126.45 281.525	LANCASTER TOWER★ 120.9 (CTAF) 251.1	GND CON 121.8	UNICOM 122.95
------------------------	---	---	-------------------------	-------------------------



NE-4, 16 APR 2026 to 14 MAY 2026

NE-4, 16 APR 2026 to 14 MAY 2026

ELEV 403	D	TDZE 384
----------	----------	----------



CATEGORY	A	B	C	D
S-26	1020-1 636 (700-1)		1020-1 3/4 636 (700-1 3/4)	1020-2 636 (700-2)
CIRCLING	1020-1 617 (700-1)		1020-1 3/4 617 (700-1 3/4)	1080-2 1/4 677 (700-2 1/4)