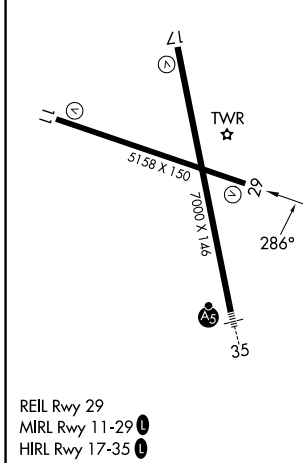
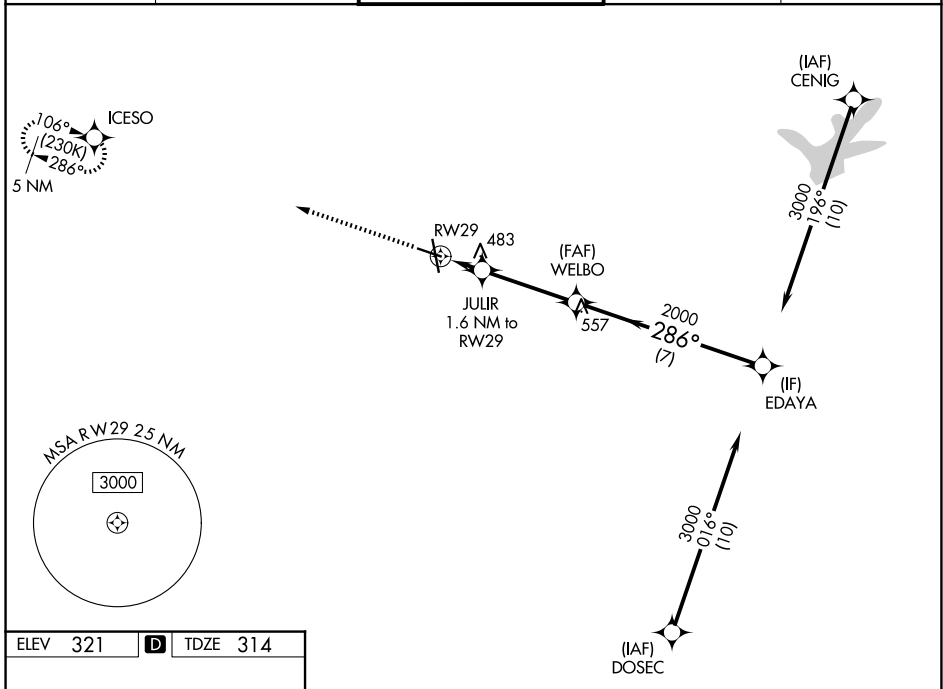


WAAS CH <b>87022</b> <b>W29A</b>	APP CRS <b>286°</b>	Rwy Ldg TDZE Apt Elev	<b>5158</b> <b>314</b> <b>321</b>
----------------------------------------	------------------------	-----------------------------	-----------------------------------------

# RNAV (GPS) RWY 29

EASTERWOOD FLD (CLL)

RNP APCH.		MISSED APPROACH: Climb to 2000 direct ICESO and hold.		
<p><b>⚠</b> Baro-VNAV NA when using Caldwell altimeter setting.                  For uncompensated Baro-VNAV systems, LNAV/VNAV NA below -3°C or above 54°C. Rwy 29 helicopter visibility reduction below ¾ SM NA.</p>				
ATIS <b>126.85</b>	HOUSTON APP CON <b>134.3 360.85</b>	EASTERWOOD TOWER * <b>118.5 (CTAF) 0 284.7</b>	GND CON <b>128.7 284.7</b>	UNICOM <b>122.95</b>



ELEV 321	<b>D</b>	TDZE 314					
2000	ICESO						
*LNAV only.							
RW29	JULIR 1.6 NM to RW29	WELBO 2000	EDAYA 3000		GP 3.00° TCH 54		
1.6 NM	3.5 NM		7 NM				
CATEGORY	A	B	C	D	E		
LPV DA	564-¾		250 (300-¾)				
LNAV/VNAV DA	762-1¾		448 (500-1¾)				
LNAV MDA	740-1	426 (500-1)	740-1¼		426 (500-1¼)		
CIRCLING	860-1	880-1	1000-2	1180-2¾	1180-3		
	539 (600-1)	559 (600-1)	679 (700-2)	859 (900-2¾)	859 (900-3)		