

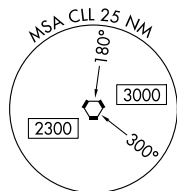
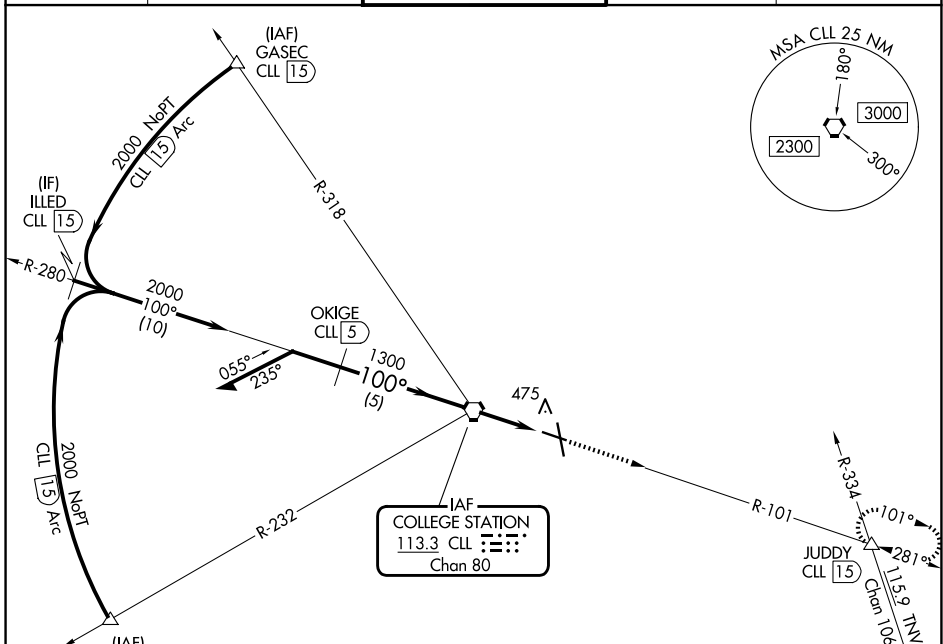
VORTAC CLL 113.3 Chan 80	APP CRS 100°	Rwy Ldg TDZE Apt Elev	5158 319 321
--	------------------------	-----------------------------	---

VOR or TACAN RWY 11

EASTERWOOD FLD (CLL)

DME required for procedure entry.		MISSED APPROACH: Climb to 3100 on CLL VORTAC R-101 to JUDDY INT/CLL 1.5 DME and hold.	
Procedure turn NA for Cat E.	Rwy 11 helicopter visibility reduction below 3/4 SM NA.		

ATIS 126.85	HOUSTON APP CON 134.3 360.85	EASTERWOOD TOWER ★ 118.5 (CTAF) 284.7	GND CON 128.7 284.7	UNICOM 122.95
-----------------------	--	---	-------------------------------	-------------------------



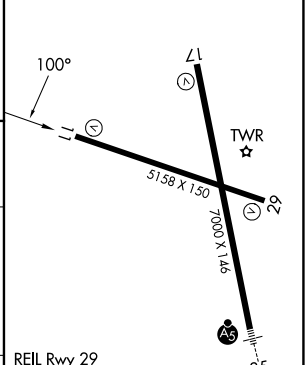
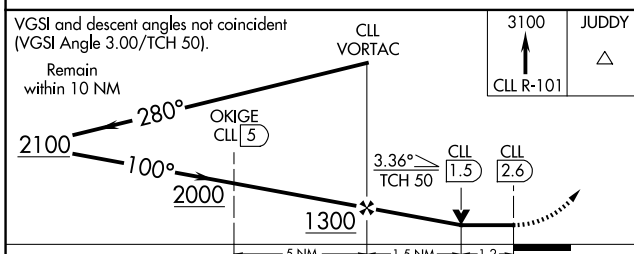
IAF
COLLEGE STATION
113.3 CLL
Chan 80

SC-5, 16 APR 2026 to 14 MAY 2026

SC-5, 16 APR 2026 to 14 MAY 2026



ELEV 321	TDZE 319
----------	----------



VGSI and descent angles not coincident (VGSI Angle 3.00/TCH 50). Remain within 10 NM	CLL VORTAC				
	2100	280°	100°	2000	1300
		OKIGE CLL 5		3.36 x 50 TCH	CLL 1.5, 2.6
		5 NM	1.5 NM	1.2 NM	
CATEGORY	A	B	C	D	E
S-11	740-1	421 (500-1)	740-1 1/4	421 (500-1 1/4)	
CIRCLING	860-1 539 (600-1)	880-1 559 (600-1)	1000-2 679 (700-2)	1180-2 3/4 859 (900-2 3/4)	1180-3 859 (900-3)

REIL Rwy 29	MIRL Rwy 11-29	HIRL Rwy 17-35			
FAF to MAP 2.6 NM					
Knots	60	90	120	150	180
Min:Sec	2:36	1:44	1:18	1:02	0:52