

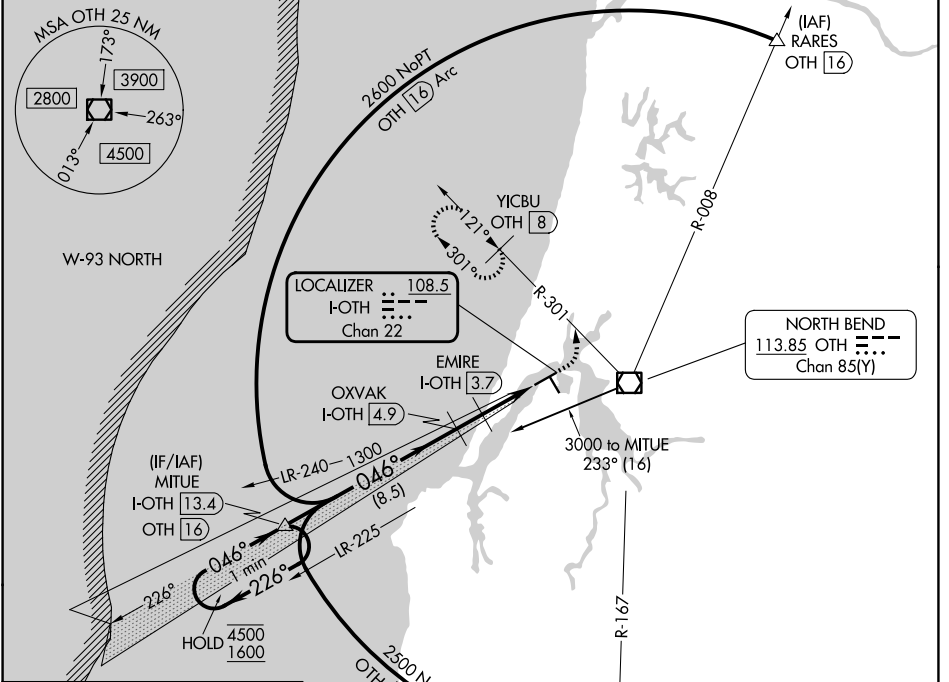
LOC/DME I-OTH <b>108.5</b> Chan 22	APP CRS <b>046°</b>	Rwy Ldg TDZE Apt Elev	<b>5320</b> <b>16</b> <b>17</b>
--	------------------------	-----------------------------	---------------------------------------

# ILS Z or LOC Z RWY 5

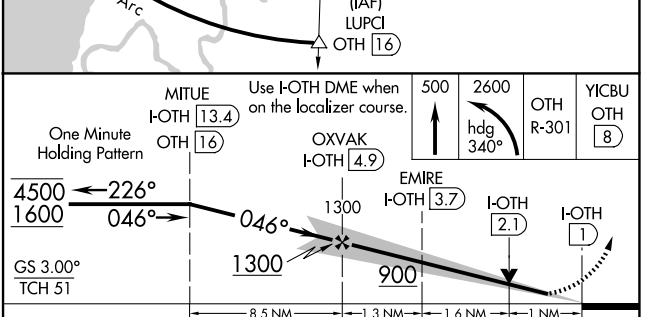
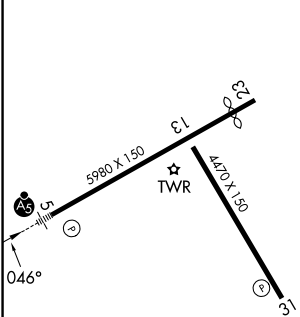
SOUTHWEST OREGON RGNL (OTH)

DME required.		MALSR	MISSED APPROACH: Climb to 500 then climbing left turn to 2600 on heading 340° and OTH VOR/DME R-301 to YICBU/OTH 8 DME and hold, continue climb-in-hold to 2600.
Circling Rwy 13, 31 NA at night.			

AWOS-3PT <b>135.075</b>	SEATTLE CENTER <b>127.55 254.35</b>	NORTH BEND TOWER* <b>118.45 (CTAF) 0</b>	GND CON <b>127.1</b>
----------------------------	--	---	-------------------------



ELEV 17	<b>D</b>	TDZE 16
---------	----------	---------



CATEGORY	A	B	C	D
S-ILS 5	216-1/2 200 (200-1/2)			
S-LOC 5	400-1/2	384 (400-1/2)	400-5/8	384 (400-5/8)
CIRCLING	680-1 663 (700-1)	820-1 803 (900-1)	1080-3 1063 (1100-3)	1160-3 1143 (1200-3)

HIRL Rwy 5-23

MIRL Rwy 13-31

REIL Rwy 13, 23 and 31

NW-1, 16 APR 2026 to 14 MAY 2026

NW-1, 16 APR 2026 to 14 MAY 2026