

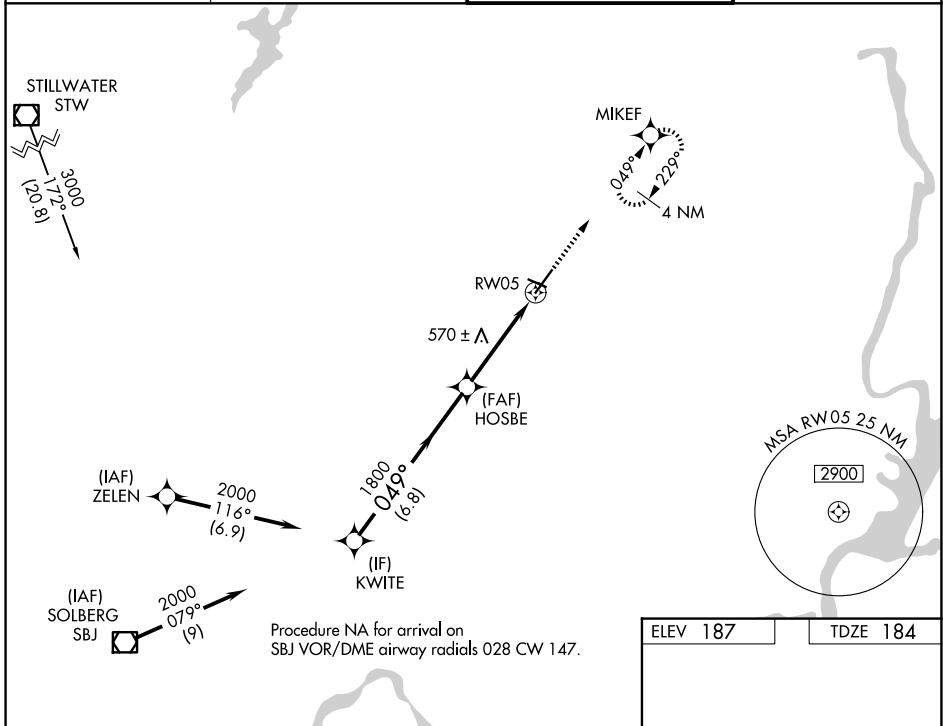
WAAS CH <b>97720</b> <b>W05A</b>	APP CRS <b>049°</b>	Rwy Ldg <b>5998</b> TDZE <b>184</b> Apt Elev <b>187</b>
--	------------------------	---

# RNAV (GPS) RWY 5

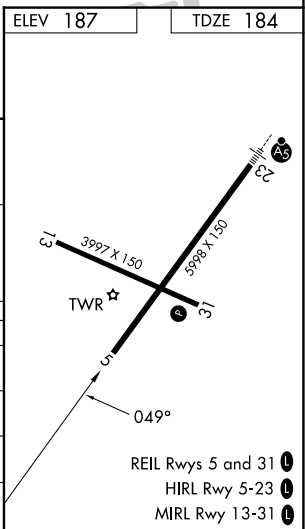
MORRISTOWN MUNI (MMU)

RNP APCH.	MISSED APPROACH: Climb to 2500 direct MIKEF and hold, continue climb-in-hold to 2500.
<p>▼ Rwy 5 helicopter visibility reduction below 3/4 SM NA.</p> <p>▲ For uncompensated Baro-VNAV systems, procedure NA below -15°C or above 46°C. Circling Rwy 13, 31 NA at night.</p>	

ATIS <b>124.25</b>	NEWARK APP CON <b>127.6 379.9</b>	MORRISTOWN TOWER * <b>118.10 (CTAF) 353.9</b>	GND CON <b>134.2</b>
-----------------------	--------------------------------------	--	-------------------------



KWITE 2000 GP 3.50° TCH 59	HOSBE 1800 049°		MIKEF 2500	
	6.8 NM		*1.7 NM to RW05	
1800		RW05		*LNAV only.
CATEGORY	A	B	C	D
LPV DA		879-2	695 (700-2)	
LNAV/VNAV DA		893-2	709 (800-2)	
LNAV MDA	880-1	696 (700-1)	880-2	696 (700-2)
CIRCLING	880-1 693 (700-1)	900-1 713 (800-1)	1000-2½ 813 (900-2½)	1200-3 1013 (1100-3)



NE-2, 16 APR 2026 to 14 MAY 2026

NE-2, 16 APR 2026 to 14 MAY 2026