


APP CRS 229°	Rwy Ldg 5998
	TDZE 184
	Apt Elev 187

RNAV (RNP) Y RWY 23

MORRISTOWN MUNI (MMU)

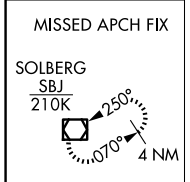
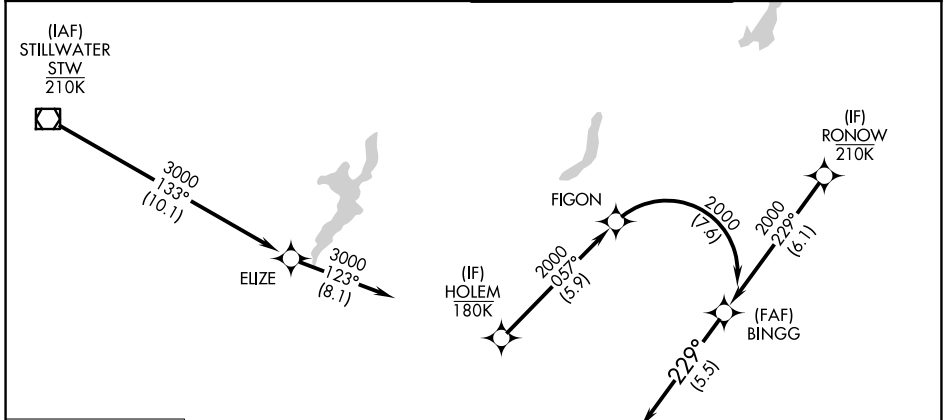
RNP AR APCH - GPS. Authorization required. From HOLEM: RF

When local altimeter setting not received, procedure NA. For uncompensated Baro-VNAV systems, procedure NA Below -15°C or above 54°C. For inop ALS, increase RNP 0.11 all Cats visibility to 1 SM and RNP 0.30 all Cats visibility to 1½ SM.

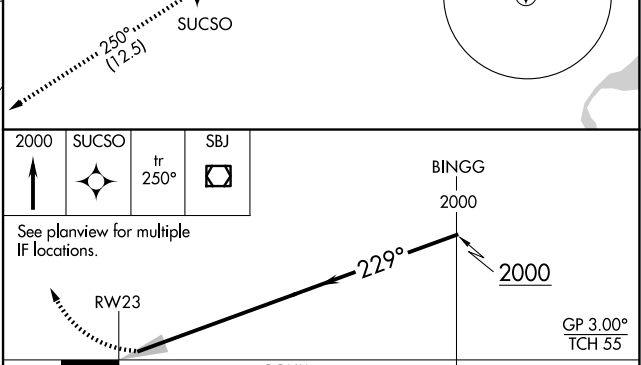
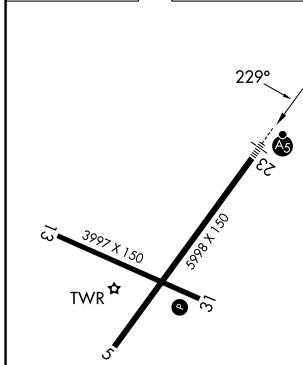
MALSR 

MISSED APPROACH: Climb to 2000 direct SUCSO then on track 250° to SBJ VOR/DME and hold.

ATIS 124.25	NEWARK APP CON 127.6 379.9	MORRISTOWN TOWER* 118.1 0 (CTAF) 353.9	GND CON 134.2
-----------------------	--------------------------------------	--	-------------------------



ELEV 187	TDZE 184
----------	----------



CATEGORY	A	B	C	D
RNP 0.11 DA		553-5/8	369 (400-5/8)	
RNP 0.30 DA		808-13/8	624 (700-13/8)	

REIL Rwy 5 and 31 
 HIRL Rwy 5-23 
 MIRL Rwy 13-31 

AUTHORIZATION REQUIRED

NE-2, 16 APR 2026 to 14 MAY 2026

NE-2, 16 APR 2026 to 14 MAY 2026