

VIRGINIA BEACH, VIRGINIA

# HI-TACAN Z RWY 32L/R

TACAN NTU Chan 113	APCH CRS 309°	Rwy ldg 32L 8000 32R 8001	TDZE 32L 22 32R 20	Arpt Elev 22
-----------------------	------------------	---------------------------------	--------------------------	-----------------

[USN]

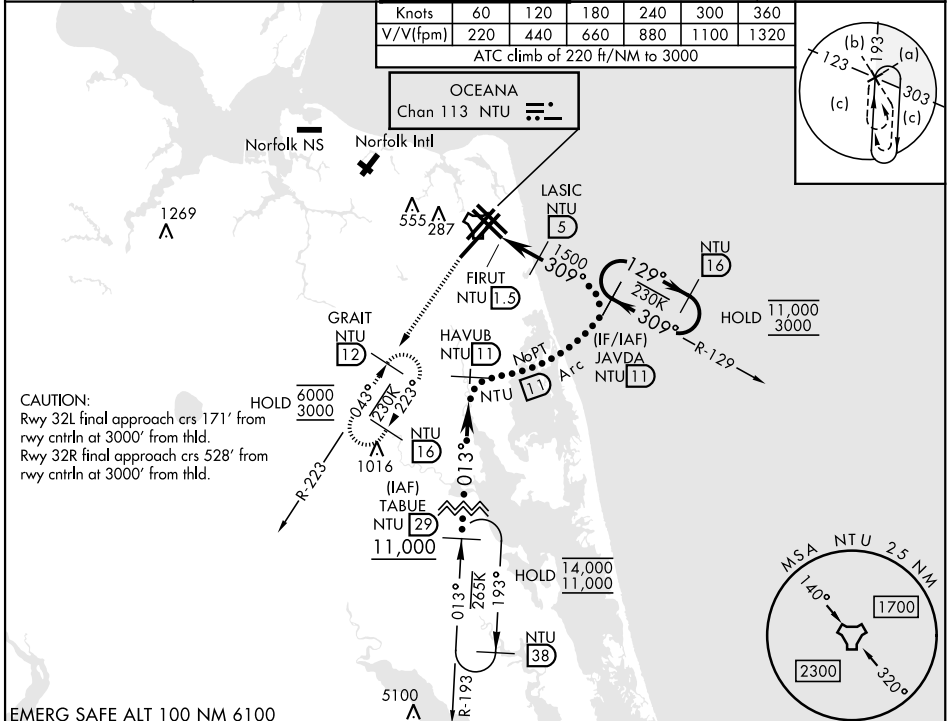
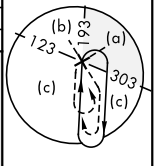
OCEANA NAS (APOLLO SOUCEK FLD) (KNTU)

ALSF-1 MISSED APPROACH: Climbing left turn to 3000, intercept NTU TACAN R-223 to GRAIT and hold.

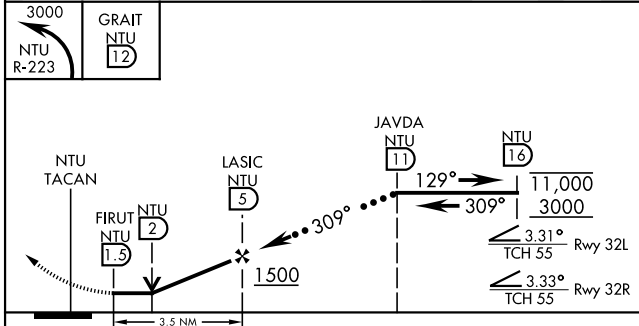
ATIS 317.6	APP/DEP CON 123.9 266.8	TOWER 127.075 360.2	GND CON 119.6 336.4	ASR/PAR
---------------	----------------------------	------------------------	------------------------	---------

Knots	60	120	180	240	300	360
V/V(fpm)	220	440	660	880	1100	1320

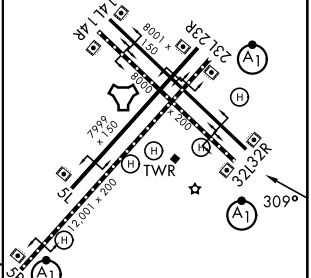
ATC climb of 220 ft/NM to 3000



EMERG SAFE ALT 100 NM 6100



ELEV	22	TDZE 32L	22
		TDZE 32R	20



CATEGORY	C	D	E
S-32L*	460-3/4	438 (500-3/4)	
S-32R	460-1 1/4	440 (500-1 1/4)	
CIRCLING	600-1 1/2	600-2	900-3
	578 (600-1 1/2)	578 (600-2)	878 (900-3)

HIRL all Rwy  
Wave-Off Lgt all Rwy

VIRGINIA BEACH, VIRGINIA

36°49'N-76°02'W

OCEANA NAS (APOLLO SOUCEK FLD) (KNTU)

Amdt 1 12JUN25

# HI-TACAN Z RWY 32L/R

NE-3, 16 APR 2026 to 14 MAY 2026

NE-3, 16 APR 2026 to 14 MAY 2026