

VIRGINIA BEACH, VIRGINIA

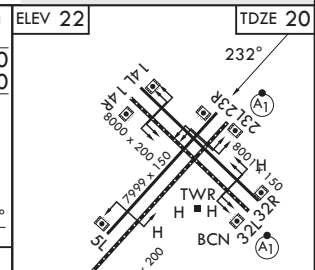
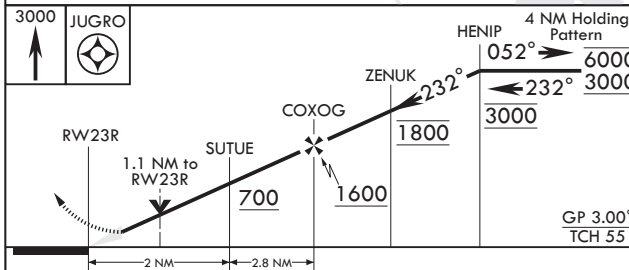
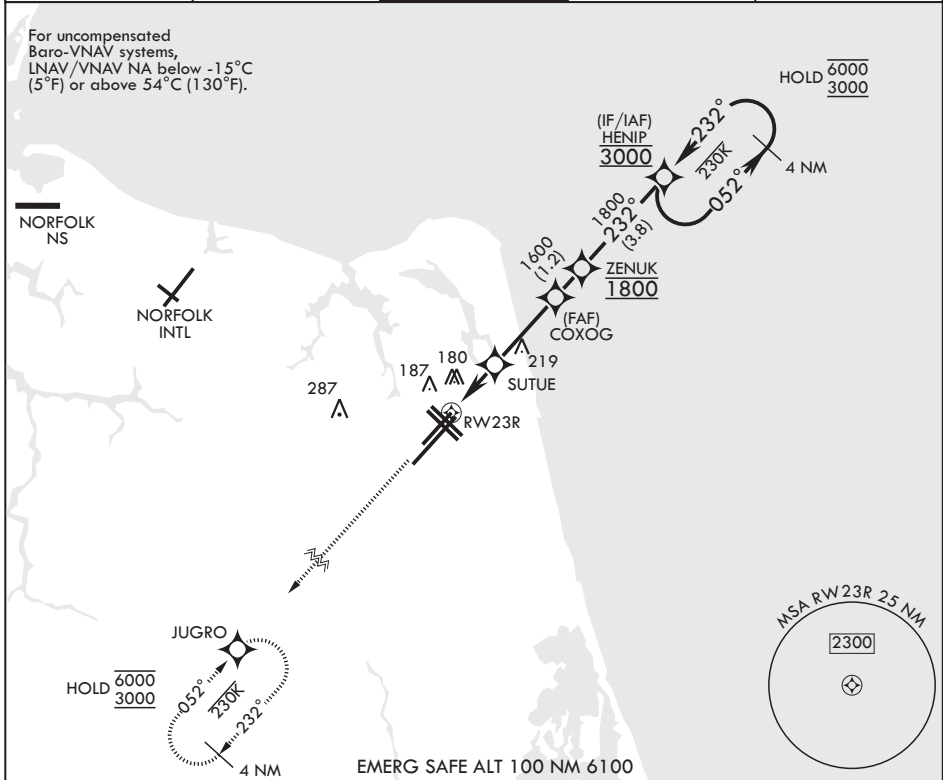
RNAV (GPS) RWY 23R

WAAS CH 71079 W23B	APCH CRS 232°	Rwy ldg TDZE Arprt Elev 22	7999 20 22
--	-------------------------	--------------------------------------	---------------------------------------

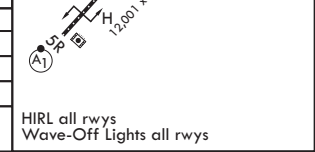
(USN) OCEANA NAS (APOLLO SOUCEK FLD) (KNTU)

RNP APCH-GPS	MISSED APPROACH: Climb to 3000 direct JUGRO and hold.
--------------	---

ATIS 317.6	APP CON/DEP CON 123.9 266.8	TOWER 127.075 360.2	GND CON 119.6 336.4	ASR/PAR
----------------------	---------------------------------------	-------------------------------	-------------------------------	---------



CATEGORY	A	B	C	D
LPV DA	220-¾	200	(200-¾)	
LNAV/VNAV DA	440-1½	420	(500-1½)	
LNAV MDA	440-1	420 (500-1)	440-1½	420 (500-1½)
CIRCLING	500-1	478 (500-1)	600-1½	600-2
			578 (600-1½)	578 (600-2)



VIRGINIA BEACH, VIRGINIA
Amdt 5 12JUN25

36°49'N - 76°02'W OCEANA NAS (APOLLO SOUCEK FLD) (KNTU)

RNAV (GPS) RWY 23R

NE-3, 16 APR 2026 to 14 MAY 2026

NE-3, 16 APR 2026 to 14 MAY 2026