

VIRGINIA BEACH, VIRGINIA

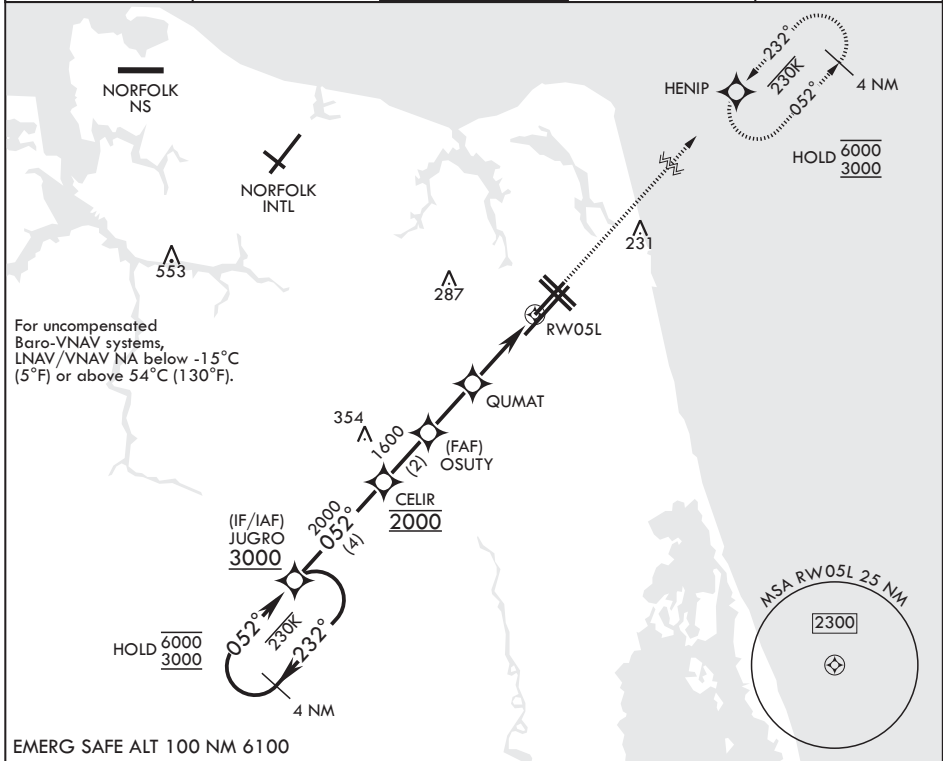
# RNAV (GPS) RWY 5L

WAAS CH <b>63997</b> W05A	APCH CRS <b>052°</b>	Rwy ldg TDZE <b>20</b>	<b>7999</b> Arpt Elev <b>22</b>
---------------------------------	-------------------------	------------------------------	---------------------------------------

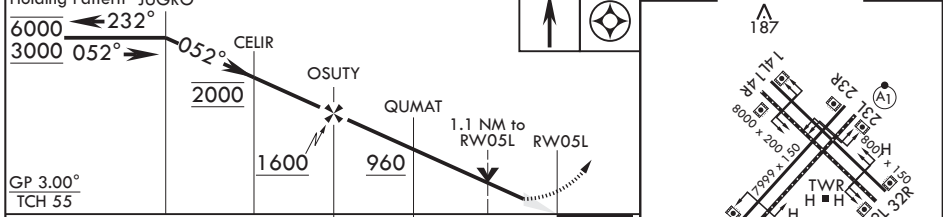
(USN) OCEANA NAS (APOLLO SOUCEK FLD) (KNTU)

RNP APCH-GPS MISSED APPROACH: Climb to 3000 direct HENIP and hold. Continue climb in hold to 3000.

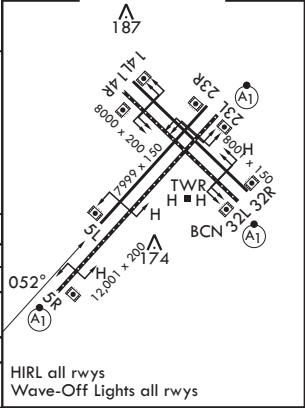
ATIS <b>317.6</b>	APP CON/DEP CON <b>123.9 266.8</b>	TOWER <b>127.075 360.2</b>	GND CON <b>119.6 336.4</b>	ASR/PAR
----------------------	---------------------------------------	-------------------------------	-------------------------------	---------



EMERG SAFE ALT 100 NM 6100



CATEGORY	A	B	C	D
LPV DA	220- <sup>3</sup> / <sub>4</sub>		200	(200- <sup>3</sup> / <sub>4</sub> )
LNAV/VNAV DA	305- <sup>7</sup> / <sub>8</sub> 285 (300- <sup>7</sup> / <sub>8</sub> )	316- <sup>7</sup> / <sub>8</sub> 296 (300- <sup>7</sup> / <sub>8</sub> )	324- <sup>7</sup> / <sub>8</sub> 304 (400- <sup>7</sup> / <sub>8</sub> )	335- <sup>7</sup> / <sub>8</sub> 315 (400- <sup>7</sup> / <sub>8</sub> )
LNAV MDA	440-1	420 (500-1)	440-1 <sup>1</sup> / <sub>2</sub>	420 (500-1 <sup>1</sup> / <sub>2</sub> )
CIRCLING	500-1	478 (500-1)	600-1 <sup>1</sup> / <sub>2</sub> 578 (600-1 <sup>1</sup> / <sub>2</sub> )	600-2 578 (600-2)



VIRGINIA BEACH, VIRGINIA 36°49'N - 76°02'W OCEANA NAS (APOLLO SOUCEK FLD) (KNTU)

Amdt 5 12JUN25

# RNAV (GPS) RWY 5L

NE-3, 16 APR 2026 to 14 MAY 2026

NE-3, 16 APR 2026 to 14 MAY 2026