

VIRGINIA BEACH, VIRGINIA

# RNAV (GPS) RWY 5R

WAAS CH <b>69870</b> W05B	APCH CRS <b>052°</b>	Rwy ldg TDZE <b>19</b> Arprt Elev <b>22</b>
---------------------------------	-------------------------	---

(USN)

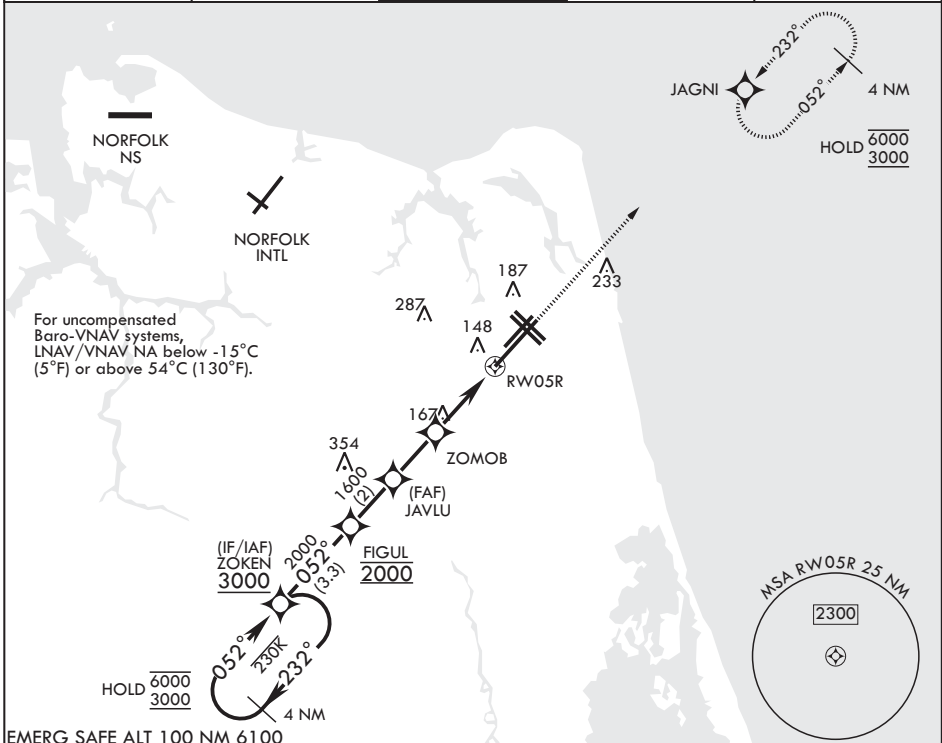
OCEANA NAS (APOLLO SOUCEK FLD) (KNTU)

RNP APCH-GPS

▼ \* When ALS inop increase vis to 3/4 mile.  
 \*\* When ALS inop increase vis to 7/8 mile.  
 \*\*\* When ALS inop, increase CAT AB vis to 1 mile; CAT CD vis to 1 1/8 miles.

ALSF-1 MISSED APPROACH: Climb to 3000 direct JAGNI and hold. Continue climb in hold to 3000.

ATIS <b>317.6</b>	APP CON/DEP CON <b>123.9 266.8</b>	TOWER <b>127.075 360.2</b>	GND CON <b>119.6 336.4</b>	ASR/PAR
----------------------	---------------------------------------	-------------------------------	-------------------------------	---------



EMERG SAFE ALT 100 NM 6100

4 NM Holding Pattern ZOKEN	3000	JAGNI	ELEV 22	TDZE 19	
6000 ← 232°	3000 → 052°	FIGUL	JAVLU	ZOMOB	RWY05R
GP 3.00°	TCH 55	2000	1600	960	1.1 NM to RWY05R
		2 NM		2.8 NM	
CATEGORY	A	B	C	D	
LPV DA*	219-½		200	(200-½)	
LNAV/VNAV DA**	333-½		314	(400-½)	
LNAV MDA***	420-½	401 (400-½)	420-¾	401 (400-¾)	
CIRCLING	500-1	478 (500-1)	600-1½ 578 (600-1½)	600-2 578 (600-2)	

VIRGINIA BEACH, VIRGINIA

36°49'N - 76°02'W OCEANA NAS (APOLLO SOUCEK FLD) (KNTU)

Amdt 5 12JUN25

# RNAV (GPS) RWY 5R

NE-3, 16 APR 2026 to 14 MAY 2026

NE-3, 16 APR 2026 to 14 MAY 2026