

VIRGINIA BEACH, VIRGINIA

TACAN Y RWY 23L/R

TACAN NTU Chan 113	APCH CRS 244°	Rwy ldg 23L 12,001 23R 7999
		TDZE 23L 21 23R 20
		Arpt Elev 22

[USN]
 OCEANA NAS (APOLLO SOUCEK FLD) (KNTU)

▼ * When ALS inop, increase CAT AB vis to 1 mile, CAT CD vis to 1½ miles.



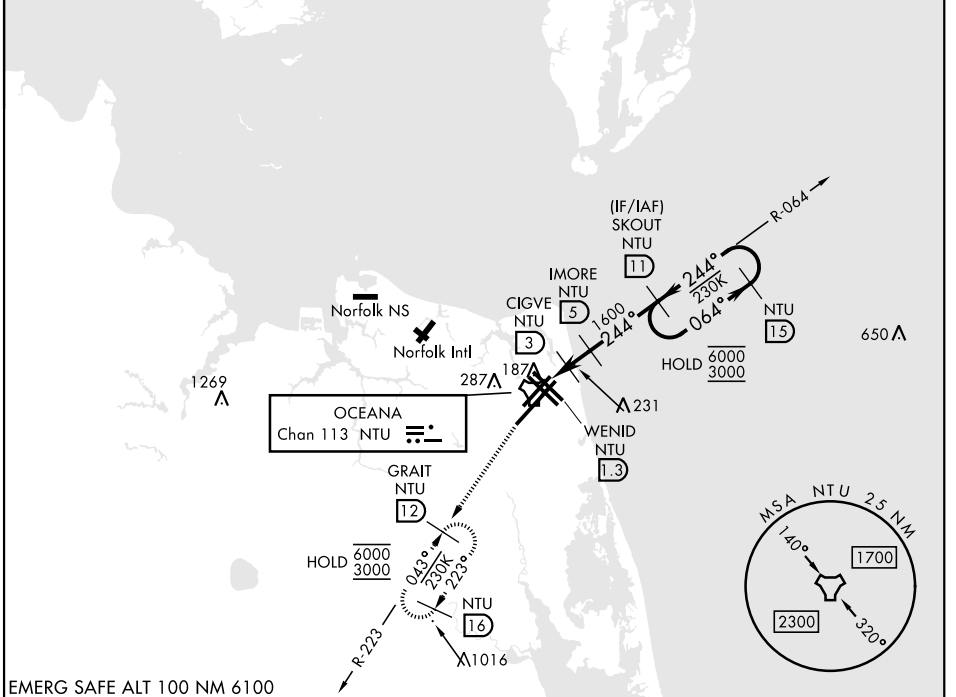
MISSED APPROACH: Climb to 3000 via R-064 to NTU TACAN then via R-223 to GRAIT and hold.

ATIS 317.6	APP/DEP CON 123.9 266.8	TOWER 127.075 360.2	GND CON 119.6 336.4	ASR/PAR
-------------------	--------------------------------	----------------------------	----------------------------	---------

CAUTION: Rwy 23L final approach crs 209° from rwy cntrln at 3000' from thld.
 Rwy 23R final approach crs 491° from rwy cntrln at 3000' from thld.

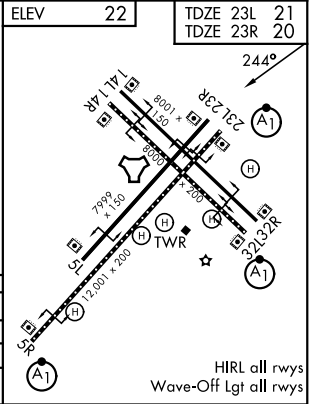
NE-3, 16 APR 2026 to 14 MAY 2026

NE-3, 16 APR 2026 to 14 MAY 2026



EMERG SAFE ALT 100 NM 6100

3000 ↑ NTU R-064	NTU	NTU R-223		
CATEGORY	A	B	C	D
S-23L*	440-½	419 (500-½)	440-¾	419 (500-¾)
S-23R	440-1	420 (500-1)	440-1½	420 (500-1½)
CIRCLING	500-1	478 (500-1)	600-1½ 578 (600-1½)	600-2 578 (600-2)



VIRGINIA BEACH, VIRGINIA

36° 49' N-76° 02' W

OCEANA NAS (APOLLO SOUCEK FLD) (KNTU)

Amtd 1 12JUN25

TACAN Y RWY 23L/R

HIRL all rwys
 Wave-Off Lgt all rwys