

TACAN Y RWY 32L/R

[USN]
OCEANA NAS (APOLLO SOUCEK FLD) (KNTU)

TACAN NTU Chan 113	APCH CRS 309°	Rwy ldg 32L 8000 32R 8001	TDZE 32L 22 32R 20	Arprt Elev 22
-----------------------	------------------	---------------------------------	--------------------------	------------------

ALSIF-1

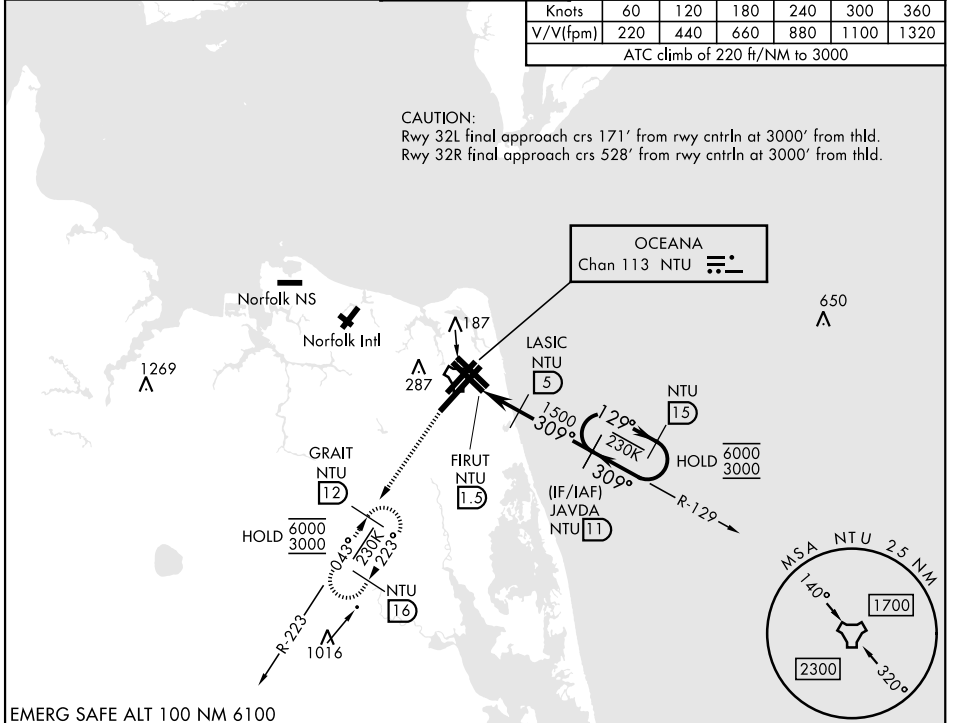
 MISSED APPROACH: Climbing left turn to 3000, intercept NTU TACAN R-223 to GRAIT and hold.

* When ALS inop, increase CAT AB vis to 1 mile, CAT CD vis to 1¼ miles.

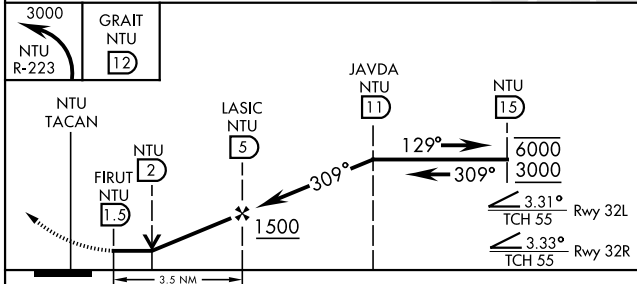
ATIS 317.6	APP/DEP CON 123.9 266.8	TOWER 127.075 360.2	GND CON 119.6 336.4	ASR/PAR
---------------	----------------------------	------------------------	------------------------	---------

Knots	60	120	180	240	300	360
V/V(fpm)	220	440	660	880	1100	1320

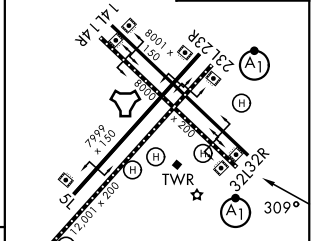
ATC climb of 220 ft/NM to 3000



EMERG SAFE ALT 100 NM 6100



ELEV	22	TDZE 32L	22
		TDZE 32R	20



CATEGORY	A	B	C	D
S-32L *	460-1/2	438 (500-1/2)	460-3/4	438 (500-3/4)
S-32R	460-1	440 (500-1)	460-1 1/4	440 (500-1 1/4)
CIRCLING	500-1	478 (500-1)	600-1 1/2 578 (600-1/2)	600-2 578 (600-2)

HIRL all rwy's
Wave-Off lgt all rwy's

TACAN Y RWY 32L/R

NE-3, 16 APR 2026 to 14 MAY 2026

NE-3, 16 APR 2026 to 14 MAY 2026