

LOC/DME I-REE	APP CRS	Rwy Ldg	<b>7302</b>
<b>111.35</b>	<b>316°</b>	TDZE	<b>806</b>
Chan <b>50 (Y)</b>		Apt Elev	<b>808</b>

# ILS or LOC RWY 32

SOUTHERN WISCONSIN RGNL (JVL)

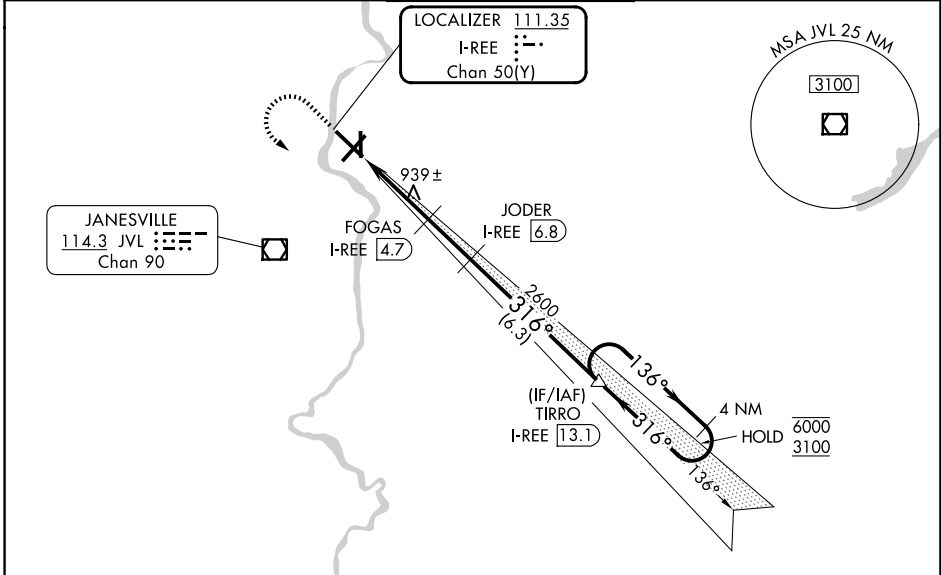
DME required. RNP APCH - GPS.

**▼** Circling Rwy 18 NA at night. When local altimeter setting not received, use Chicago/Rockford Intl altimeter setting and increase DA to 1075, increase all MDA 80 feet. Increase S-LOC 32 Cats C and D visibility  $\frac{3}{8}$  SM, and Circling Cats C/D  $\frac{1}{4}$  SM. VDP NA when using Chicago/Rockford Intl altimeter setting. For inop ALS when using Chicago/Rockford Intl altimeter setting, increase S-ILS 32 visibility all Cats to  $\frac{3}{8}$  SM and S-LOC 32 visibility Cats C/D to  $\frac{1}{8}$  SM.



**MISSED APPROACH:** Climb to 1700 then climbing left turn to 3100 direct TIRRO and hold.

ATIS <b>128.25</b>	ROCKFORD APP CON <b>121.0 327.0</b>	JANESVILLE TOWER ★ <b>118.8 (CTAF) 225.4</b>	GND CON <b>121.65</b>	UNICOM <b>122.95</b>
-----------------------	--	---	--------------------------	-------------------------



EC-3, 16 APR 2026 to 14 MAY 2026

EC-3, 16 APR 2026 to 14 MAY 2026

