

| | | | |
|--|------------------------|-----------------------------|---|
| WAAS CH 86617 W14A | APP CRS 135° | Rwy Ldg TDZE Apt Elev | 7302 803 808 |
|--|------------------------|-----------------------------|---|

RNAV (GPS) RWY 14

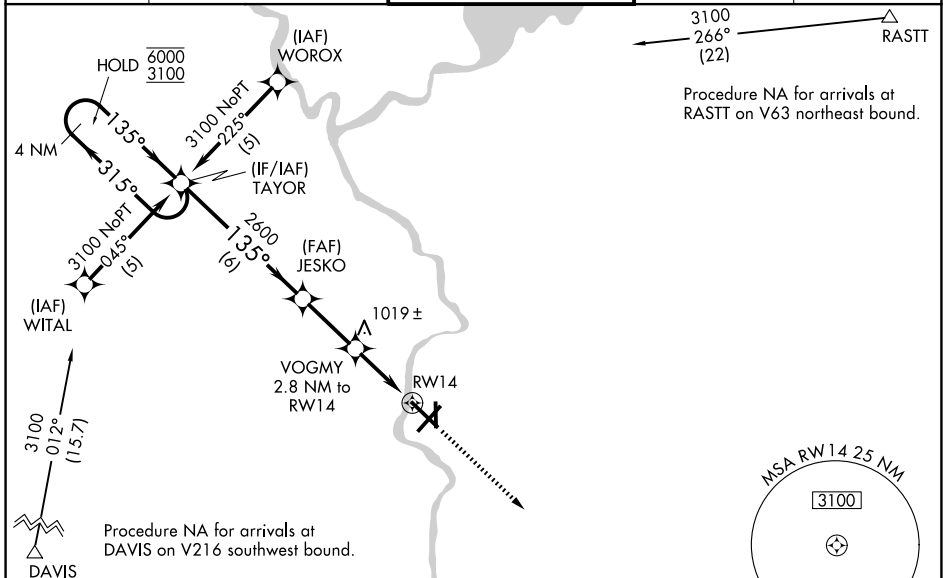
SOUTHERN WISCONSIN RGNL (JVL)

RNP APCH-GPS.

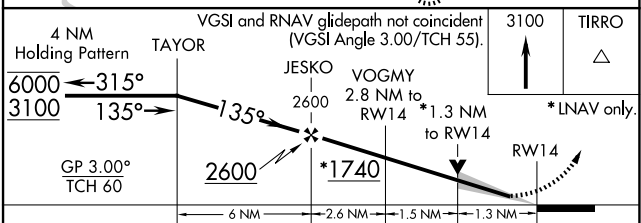
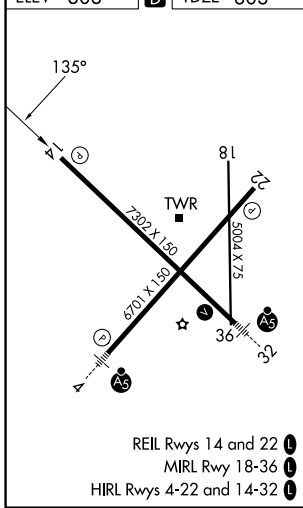
⚠ Circling Rwy 18 NA at night. Baro-VNAV NA when using Rockford altimeter setting. For uncompensated Baro-VNAV systems, LNAV/VNAV NA below -16°C or above 47°C. VDP NA when using Rockford altimeter setting. When local altimeter setting not received, use Rockford altimeter setting and increase LPV DA to 1072 feet, LNAV/VNAV DA to 1291 feet, and all MDAs 80 feet; increase LPV all Cats visibility $\frac{1}{8}$ SM, LNAV/VNAV all Cats visibility $\frac{1}{4}$ SM, LNAV Cat C/D visibility $\frac{1}{4}$ SM, and Circling Cat C/D visibility $\frac{1}{4}$ SM.

MISSED APPROACH: Climb to 3100 direct TIRRO and hold.

| | | | | |
|-----------------------|--|---|--------------------------|-------------------------|
| ATIS 128.25 | ROCKFORD APP CON 121.0 327.0 | JANESVILLE TOWER * 118.8 (CTAF) 225.4 | GND CON 121.65 | UNICOM 122.95 |
|-----------------------|--|---|--------------------------|-------------------------|



| | | |
|----------|----------|----------|
| ELEV 808 | D | TDZE 803 |
|----------|----------|----------|



| CATEGORY | A | B | C | D |
|--------------|-----------------------|-----------------------|--|--|
| LPV DA | 1003- $\frac{3}{4}$ | | 200 (200- $\frac{3}{4}$) | |
| LNAV/VNAV DA | 1222-1 $\frac{1}{8}$ | | 419 (500-1 $\frac{1}{8}$) | |
| LNAV MDA | 1280-1 | 477 (500-1) | 1280-1 $\frac{3}{8}$ 477 (500-1 $\frac{3}{8}$) | 1280-1 $\frac{3}{8}$ 477 (500-1 $\frac{3}{8}$) |
| CIRCLING | 1280-1 472 (500-1) | 1320-1 512 (600-1) | 1420-1 $\frac{3}{4}$ 612 (700-1 $\frac{3}{4}$) | 1460-2 652 (700-2) |