

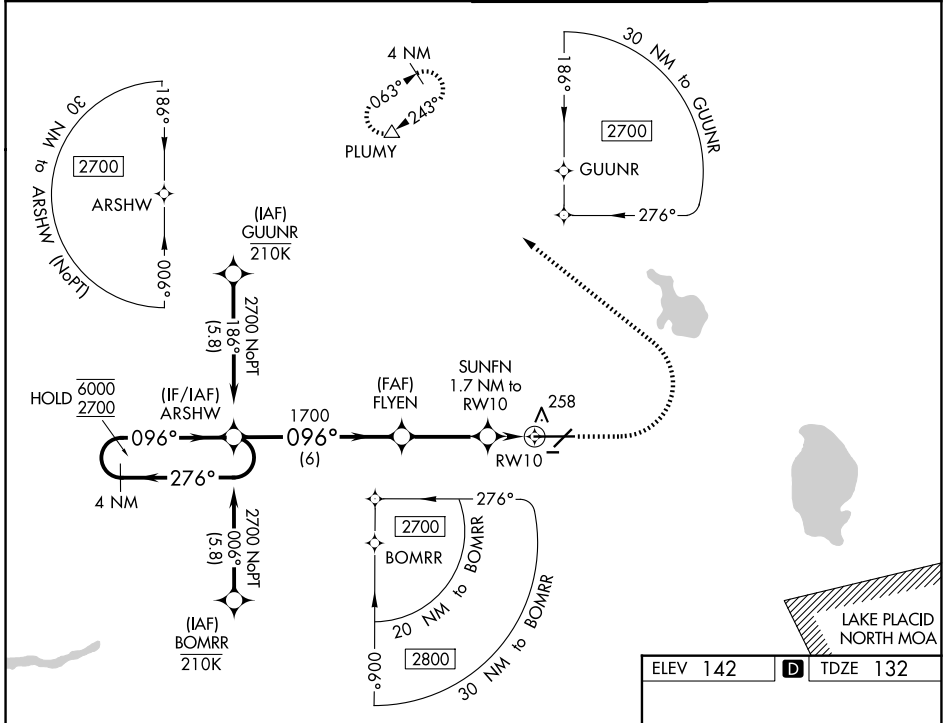
WAAS CH 78305 W10A	APP CRS 096°	Rwy Ldg 8500 TDZE 132 Apt Elev 142
----------------------------------------	------------------------	---------------------------------------------------------------

RNAV (GPS) RWY 10

LAKELAND LINDER INTL (LAL)

RNP APCH-GPS.	ALSF-2	MISSED APPROACH: Climb to 1100 then climbing left turn to 2000 direct PLUMY and hold.
<p>⚠ Circling NA to Rwy's 8 and 26. For uncompensated Baro-VNAV systems, LNAV/VNAV NA below -15°C or above 54°C. For inop ALS, increase LNAV/VNAV all Cats visibility to RVR 4500.</p>		

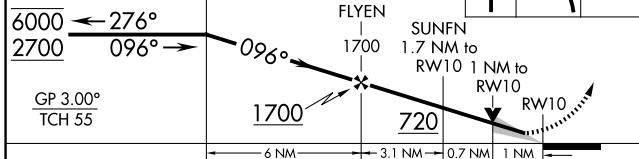
ATIS 118.025	TAMPA APP CON 120.65 290.3	LAKELAND TOWER 124.5 236.775	GND CON 121.4
------------------------	--------------------------------------	----------------------------------------	-------------------------



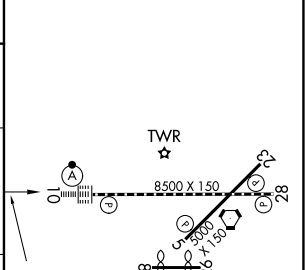
SE-3, 16 APR 2026 to 14 MAY 2026

SE-3, 16 APR 2026 to 14 MAY 2026

4 NM Holding Pattern ARSHW
 VGS1 and RNAV glidepath not coincident (VGS1 Angle 3.00/TCH 71).
 1100 2000 PLUMY



ELEV 142	TDZE 132
----------	----------



CATEGORY	A	B	C	D
LPV DA		332/18	200 (200-½)	
LNAV/VNAV DA		439/24	307 (300-½)	
LNAV MDA	520/24	388 (400-½)	520/35	388 (400-¾)
CIRCLING	600-1 458 (500-1)	660-1 518 (600-1)	720-1½ 578 (600-1½)	840-2¼ 698 (700-2¼)

096°
 TWR
 8500 X 150
 2800
 2700
 2600
 2500
 2400
 2300
 2200
 2100
 2000
 1900
 1800
 1700
 1600
 1500
 1400
 1300
 1200
 1100
 1000
 900
 800
 700
 600
 500
 400
 300
 200
 100
 TDZ/CL Rwy 10
 HIRL Rwy's 5-23 and 10-28