

WAAS CH 77805 W23A	APP CRS 231°	Rwy Ldg 5000 TDZE 141 Apt Elev 142
--	------------------------	---

RNAV (GPS) RWY 23

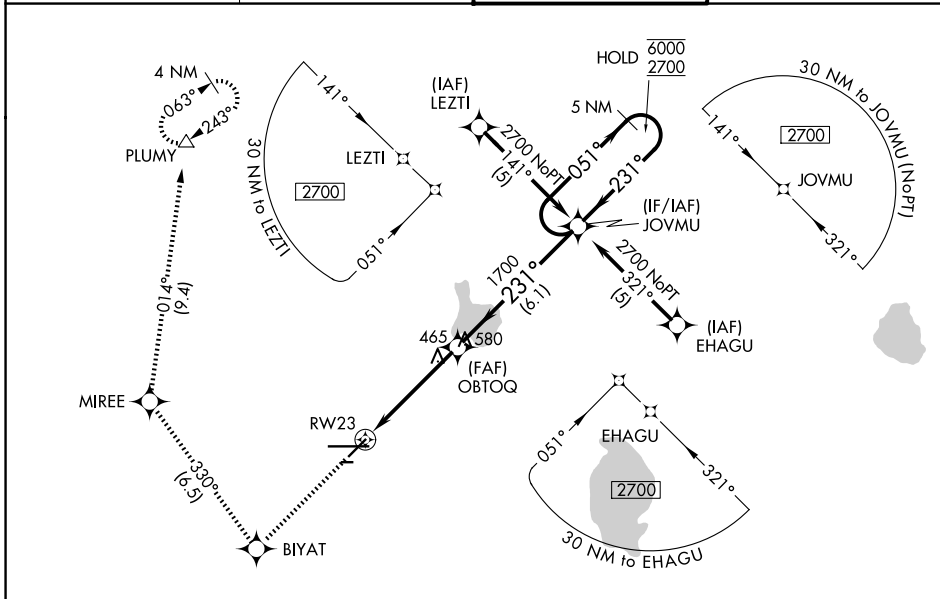
LAKELAND LINDER INTL (LAL)

RNP APCH.

▼ For uncompensated Baro-VNAV systems, LNAV/VNAV NA below -15°C or above 54°C. When local altimeter setting not received, use Plant City altimeter setting: increase LPV DA to 444 feet; increase LNAV/VNAV DA to 540 feet; increase all MDAs 20 feet and LNAV Cat C/D and Circling Cat C visibility 1/8 SM. Baro-VNAV and VDP NA when using Plant City altimeter setting. Rwy 23 helicopter visibility reduction below 3/4 SM NA. Circling NA to Rwy's 8 and 26.

MISSED APPROACH: Climb to 2000 direct BIYAT and right turn on track 330° to MIREE then on track 014° to PLUMY and hold.

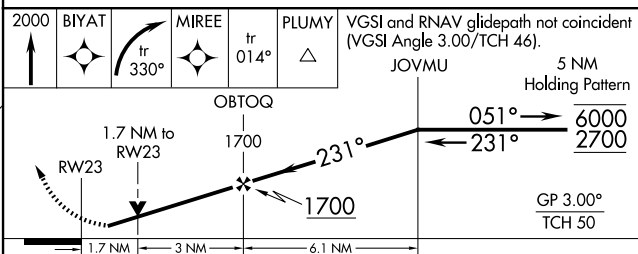
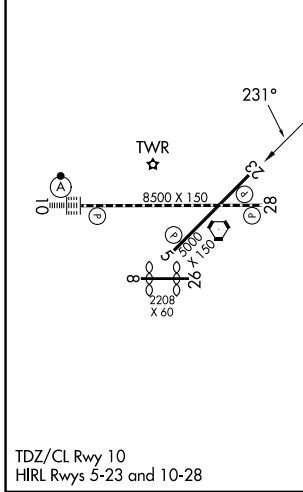
ATIS 118.025	TAMPA APP CON 120.65 290.3	LAKELAND TOWER 124.5 236.775	GND CON 121.4
------------------------	--------------------------------------	--	-------------------------



SE-3, 16 APR 2026 to 14 MAY 2026

SE-3, 16 APR 2026 to 14 MAY 2026

ELEV 142	D	TDZE 141
-----------------	----------	-----------------



CATEGORY	A	B	C	D
LPV DA	426-1 285 (300-1)			
LNAV/VNAV DA	522-1¼ 381 (400-1¼)			
LNAV MDA	720-1	579 (600-1)	720-1½ 579 (600-1½)	720-1¾ 579 (600-1¾)
CIRCLING	720-1	578 (600-1)	720-1½ 578 (600-1½)	840-2¼ 698 (700-2¼)