

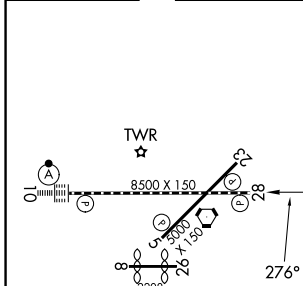
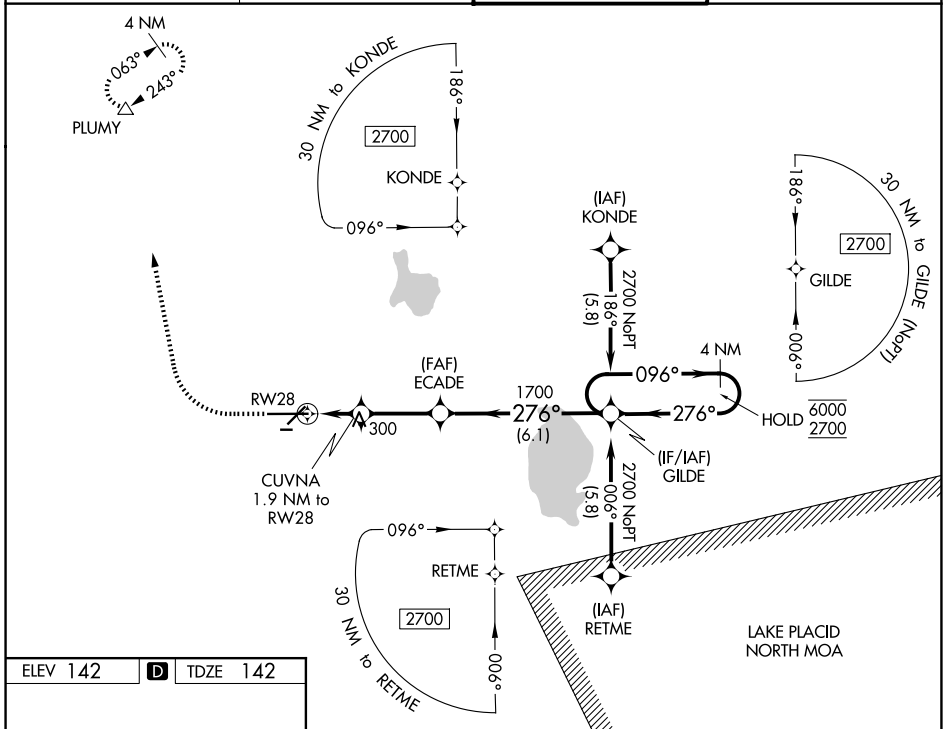
WAAS CH 82605 W28A	APP CRS 276°	Rwy Ldg TDZE 142 Apt Elev 142	8500
--	------------------------	---	-------------

RNAV (GPS) RWY 28

LAKELAND UNDER INTL (LAL)

RNP APCH-GPS.	MISSED APPROACH: Climb to 1000 then climbing right turn to 2000 direct PLUMY and hold.
<p>▼ Rwy 28 helicopter visibility reduction below RVR 4000 NA.</p> <p>▲ For uncompensated Baro-VNAV systems, LNAV/VNAV NA below -15°C or above 54°C. Circling NA to Rws 8 and 26.</p>	

ATIS 118.025	TAMPA APP CON 120.65 290.3	LAKELAND TOWER 124.5 236.775	GND CON 121.4
------------------------	--------------------------------------	--	-------------------------



TDZ/CL Rwy 10
HIRL Rws 5-23 and 10-28

SE-3, 16 APR 2026 to 14 MAY 2026

SE-3, 16 APR 2026 to 14 MAY 2026