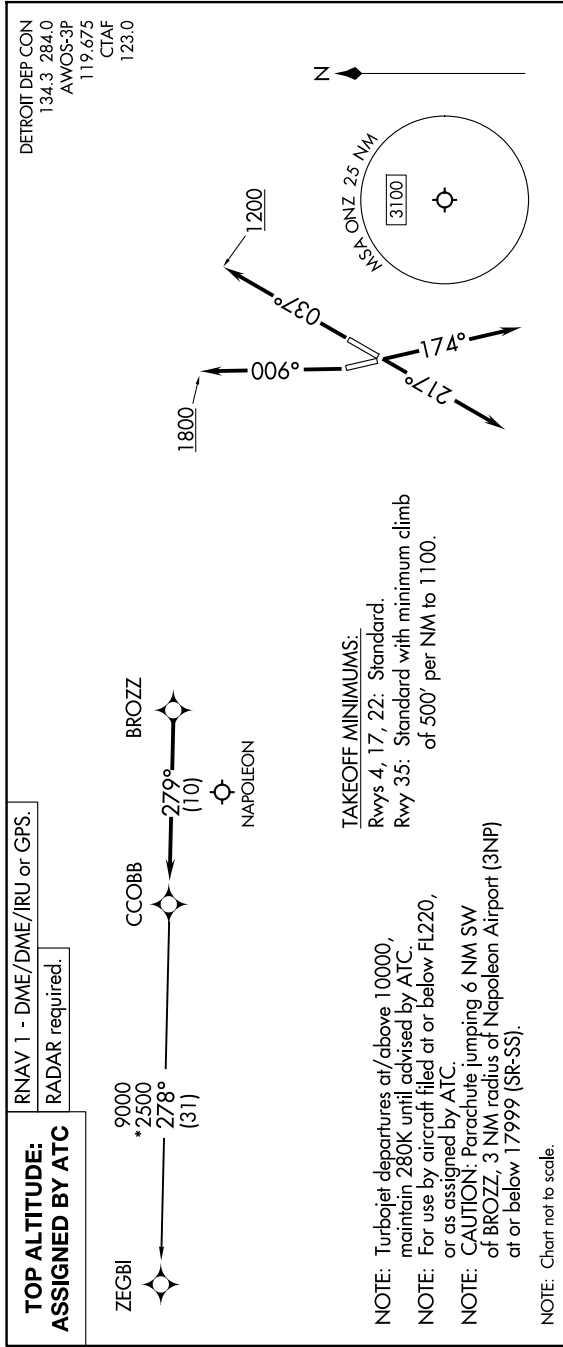


EC-1, 16 APR 2026 to 14 MAY 2026



DEPARTURE ROUTE DESCRIPTION

- TAKEOFF RUNWAY 4:** Climb on heading 037° to 1200 then as assigned by ATC, thence....
  - TAKEOFF RUNWAY 17:** Climb on heading 174° or as assigned by ATC, thence....
  - TAKEOFF RUNWAY 22:** Climb on heading 217° or as assigned by ATC, thence....
  - TAKEOFF RUNWAY 35:** Climb on heading 006° to 1800 then as assigned by ATC, thence....
- ....for RADAR vectors to BROZZ, then on track 279° to CCOBB, then on (transition).  
Maintain ATC assigned altitude, expect filed altitude 10 minutes after departure.

ZEGBI TRANSITION (CCOBB3\_ZEGBI):

EC-1, 16 APR 2026 to 14 MAY 2026