

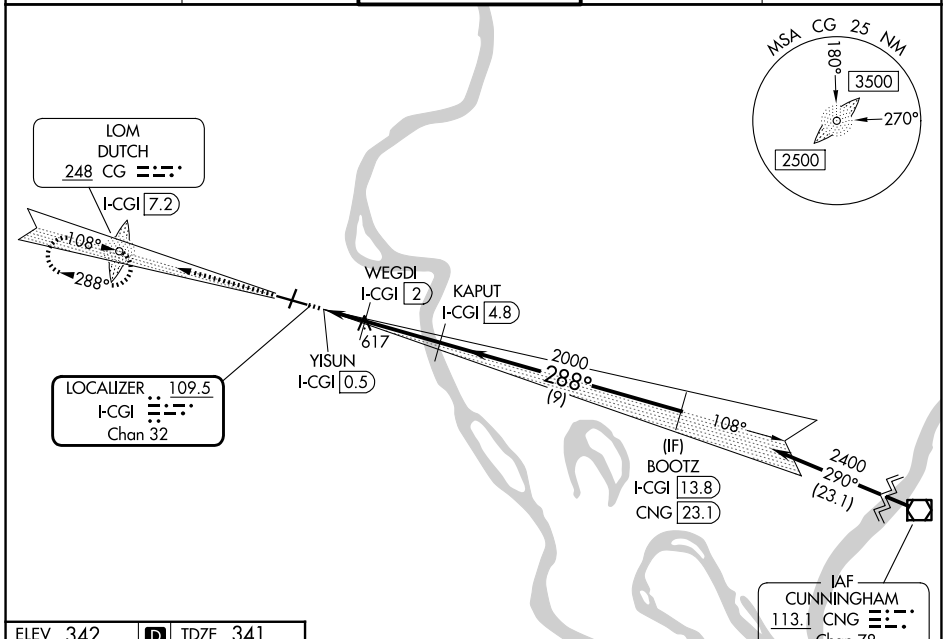
LOC/DME I-CGI 109.5 Chan 32	APP CRS 288°	Rwy Ldg TDZE 341 Apt Elev 342
---	------------------------	---

LOC BC RWY 28

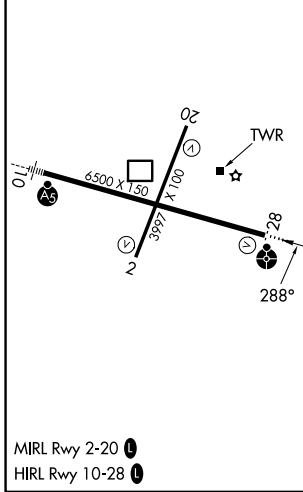
CAPE GIRARDEAU RGNL (CGI)

DME required.	ODALS	MISSED APPROACH: Climb to 2400 on I-CGI west course (288°) to DUTCH LOM/I-CGI 7.2 DME and hold.
Rwy 28 helicopter visibility reduction below 3/4 SM NA.		

ASOS 120.55	MEMPHIS CENTER 133.65 292.15	CAPE GIRARDEAU TOWER * 125.525 (CTAF)	GND CON 124.7	UNICOM 122.95
-----------------------	--	---	-------------------------	-------------------------



ELEV 342	D	TDZE 341
-----------------	----------	-----------------



BACK COURSE

	2400 I-CGI W crs (288°)	CG 	Use I-CGI DME when on localizer course. Disregard glide slope indications.	BOOTZ I-CGI (13.8)
	YISUN I-CGI (0.5)	WEGDI I-CGI (2)	KAPUT I-CGI (4.8)	
	1060	2000	2400	
	0.7	0.9	0.6	2.8 NM
				9 NM
CATEGORY	A	B	C	D
S-28	880-3/4	539 (600-3/4)	880-13/8	539 (600-13/8)
CIRCLING	880-1	960-1	1080-2	1080-2 1/4
	538 (600-1)	618 (700-1)	738 (800-2)	738 (800-2 1/4)

NC-3, 16 APR 2026 to 14 MAY 2026

NC-3, 16 APR 2026 to 14 MAY 2026

Procedure NA for arrival on CNG VOR/DME
airway radials 240 CW 346.