

WAAS CH <b>61399</b> <b>W10A</b>	APP CRS <b>108°</b>	Rwy Ldg TDZE Apt Elev	<b>6500</b> <b>337</b> <b>342</b>
--	------------------------	-----------------------------	---

# RNAV (GPS) RWY 10

CAPE GIRARDEAU RGNL (CGI)

RNP APCH - GPS.

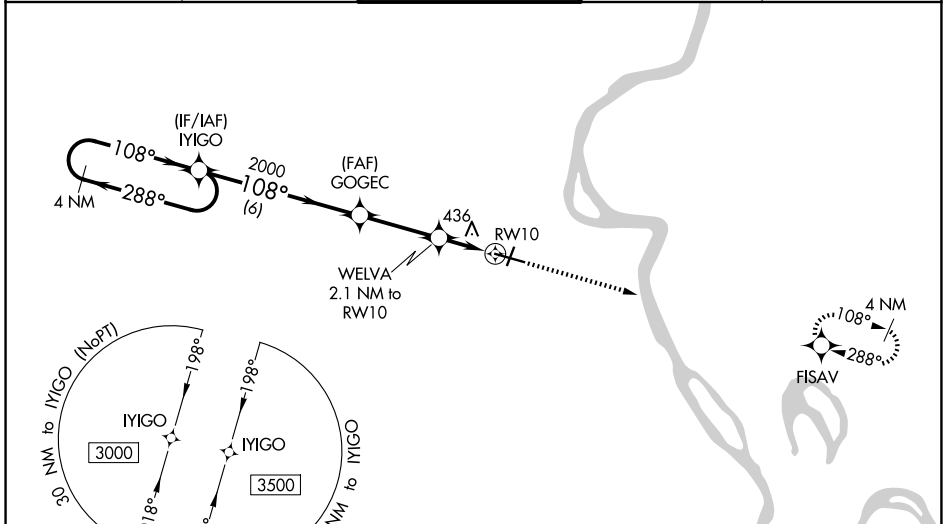
**⚠** For uncompensated Baro-VNAV systems, LNAV/VNAV NA below -17°C or above 54°C. When local altimeter setting not received, use Cairo altimeter setting and increase LPV DA to 585 feet, LNAV/VNAV DA to 761 feet, and all visibilities 1/8 SM. Increase all MDAs 60 feet and LNAV Cat C/D visibility 1/8 SM, and Circling Cats C/D visibility to 1/4 SM. Baro-VNAV and VDP NA when using Cairo Rgnl altimeter setting. For inop ALS, increase LNAV/VNAV visibility all Cats and LNAV visibility Cat C/D to 1 SM. For inop ALS, when using Cairo altimeter setting, increase LNAV/VNAV all Cats and LNAV Cat C/D visibility to 1 SM.

MALSR



MISSED APPROACH:  
Climb to 3000 direct FISAV and hold.

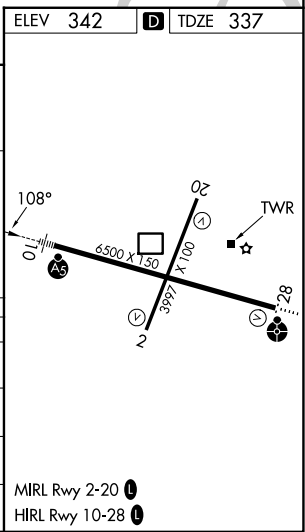
ASOS <b>120.55</b>	MEMPHIS CENTER <b>133.65 292.15</b>	CAPE GIRARDEAU TOWER ★ <b>125.525 (CTAF) 0</b>	GND CON <b>124.7</b>	UNICOM <b>122.95</b>
-----------------------	--	---	-------------------------	-------------------------



NC-3, 16 APR 2026 to 14 MAY 2026

NC-3, 16 APR 2026 to 14 MAY 2026

ELEV 342		D TDZE 337	
4 NM Holding Pattern		3000 FISAV	
3000 ← 288°		↑	
108° →		✧	
GP 3.00°		MIGO	
TCH 54		GOGEC	
2000		WELVA 2.1 NM to RWY 10	
108°		1 NM to RWY 10	
2000		RWY 10	
6 NM		3 NM	
1.1 NM		1 NM	
CATEGORY	A	B	C
LPV DA		537-1/2	200 (200-1/2)
LNAV/VNAV DA		713-5/8	376 (400-5/8)
LNAV MDA	700-1/2	363 (400-1/2)	700-5/8 363 (400-5/8)
CIRCLING	880-1 538 (600-1)	960-1 618 (700-1)	1000-1 3/4 658 (700-1 3/4)
			1080-2 1/4 738 (800-2 1/4)



MIRL Rwy 2-20 0  
HIRL Rwy 10-28 0