

WAAS CH 93832 W02A	APP CRS 023°	Rwy Ldg TDZE 342 Apt Elev 342	3997
--	------------------------	---	-------------

RNAV (GPS) RWY 2

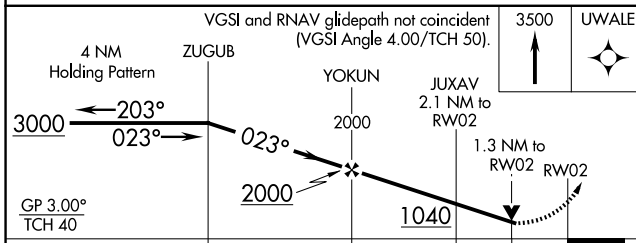
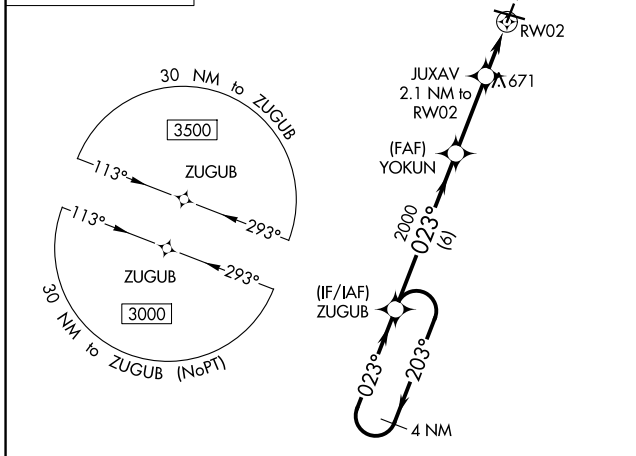
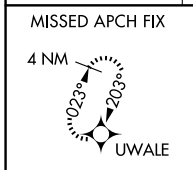
CAPE GIRARDEAU RGNL (CGI)

RNP APCH - GPS.

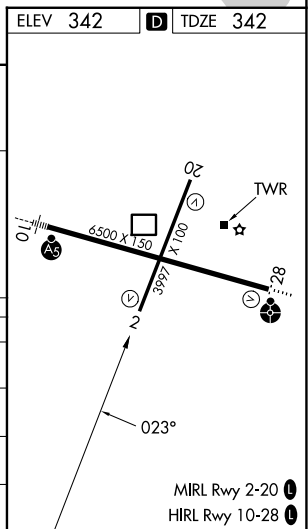
⚠ For uncompensated Baro-VNAV systems, LNAV/VNAV NA below -17°C or above 54°C. When local altimeter setting not received, use Cairo altimeter setting and increase LPV DA to 849 feet, LNAV/VNAV DA to 905 feet, and all visibilities ¼ SM. Increase all MDAs 60 feet and LNAV visibility Cat C/D ¼ SM, and Circling visibility Cat C/D ¼ SM. Rwy 2 helicopter visibility reduction below ¾ SM NA. Baro-VNAV and VDP NA when using Cairo Rgnl altimeter setting.

MISSED APPROACH: Climb to 3500 direct UWALE and hold, continue climb-in-hold to 3500.

ASOS 120.55	MEMPHIS CENTER 133.65 292.15	CAPE GIRARDEAU TOWER * 125.525 (CTAF) 1	GND CON 124.7	UNICOM 122.95
-----------------------	--	--	-------------------------	-------------------------



CATEGORY	A	B	C	D
LPV DA		801-1 ³ / ₈	459 (500-1 ³ / ₈)	
LNAV/VNAV DA		857-1 ³ / ₈	515 (600-1 ³ / ₈)	
LNAV MDA	940-1	598 (600-1)	940-1 ³ / ₄	598 (600-1 ³ / ₄)
CIRCLING	940-1 598 (600-1)	960-1 618 (700-1)	1000-1 ³ / ₄ 658 (700-1 ³ / ₄)	1080-2 ¹ / ₄ 738 (800-2 ¹ / ₄)



NC-3, 16 APR 2026 to 14 MAY 2026

NC-3, 16 APR 2026 to 14 MAY 2026