


LOC/DME I-ALO 111.7 Chan 54	APP CRS 128°	Rwy Ldg 8399 TDZE 873 Apt Elev 873
---	------------------------	---

ILS or LOC RWY 12

WATERLOO RGNL (A.L.O)

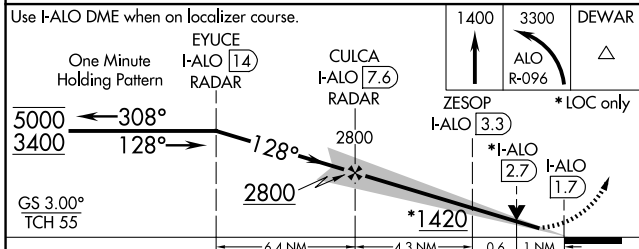
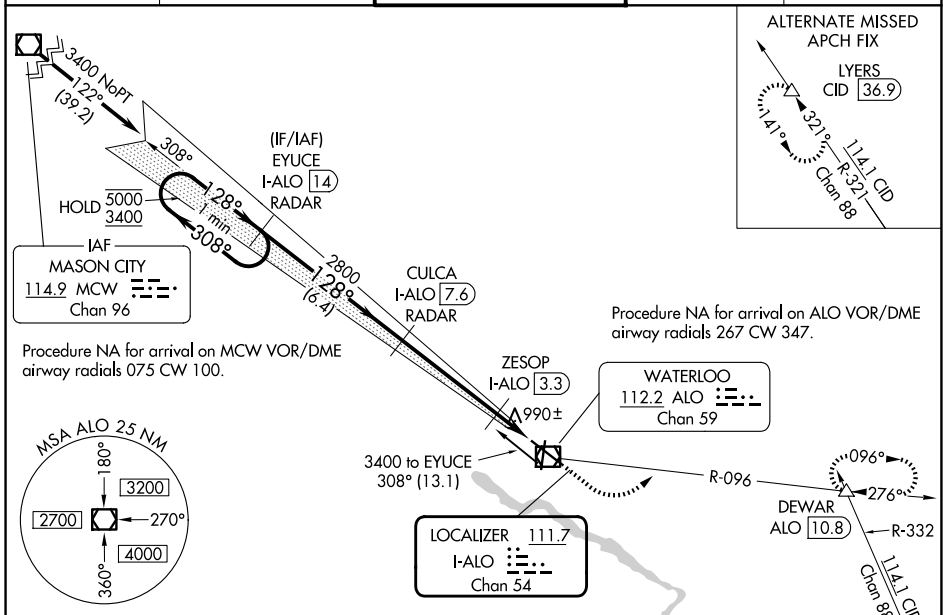
DME or RADAR required.

▼ For inop ALS, increase S-LOC 12 ZESOP FIX MINIMUMS Cats C/D visibility to RVR 5500.
▲ #RVR 1800 authorized with the use of FD or AP or HUD to DA.

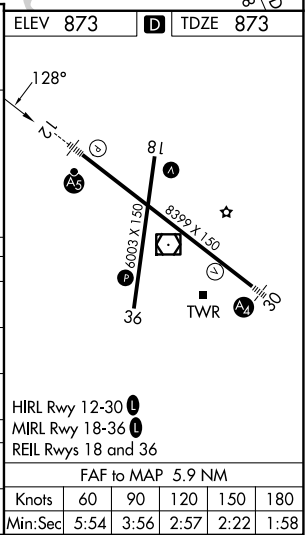
MALSR 

MISSED APPROACH: Climb to 1400 then climbing left turn to 3300 on ALO VOR/DME R-096 to DEWAR INT/ALO VOR/DME 10.8 DME and hold.

ATIS 120.65	DES MOINES APP CON * 118.9 251.15	WATERLOO TOWER * 125.075 (CTAF) 257.8	GND CON 121.9 269.1	UNICOM 122.95
-----------------------	---	---	-------------------------------	-------------------------



CATEGORY	A	B	C	D
S-ILS 12#	1073/24 200 (200-½)			
S-LOC 12	1420/24	547 (600-½)	1420/60	547 (600-1¼)
CIRCLING	1420-1	547 (600-1)	1480-1¾ 607 (700-1¾)	1600-2¼ 727 (800-2¼)
ZESOP FIX MINIMUMS (DME REQUIRED)				
S-LOC 12	1240/24	367 (400-½)	1240/35	367 (400-¾)
CIRCLING	1360-1 487 (500-1)	1400-1 527 (600-1)	1480-1¾ 607 (700-1¾)	1600-2¼ 727 (800-2¼)



NC-3, 16 APR 2026 to 14 MAY 2026

NC-3, 16 APR 2026 to 14 MAY 2026