

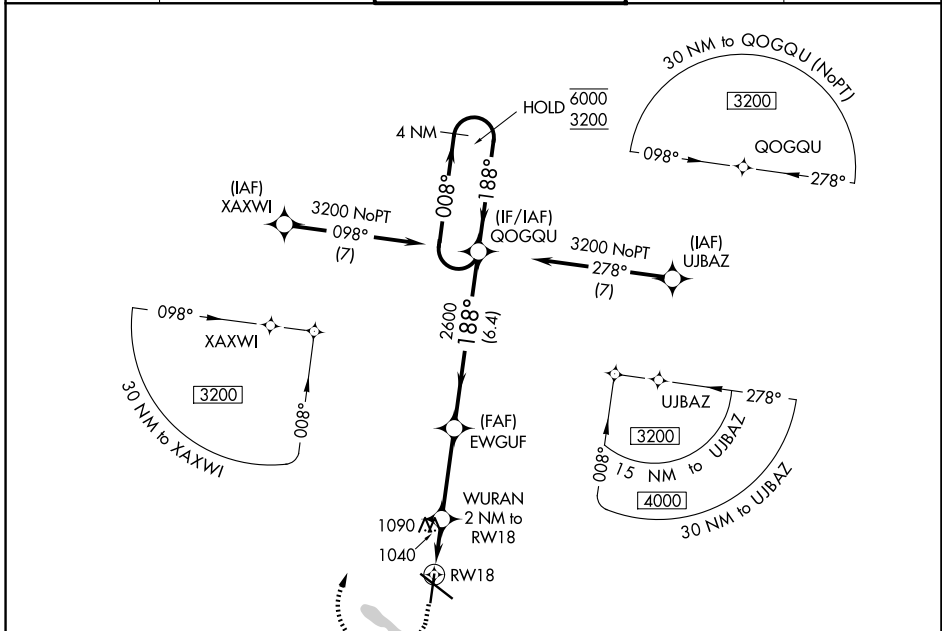
WAAS CH 58042 W18A	APP CRS 188°	Rwy Ldg TDZE Apt Elev 6003 871 873
--	------------------------	--

RNAV (GPS) RWY 18

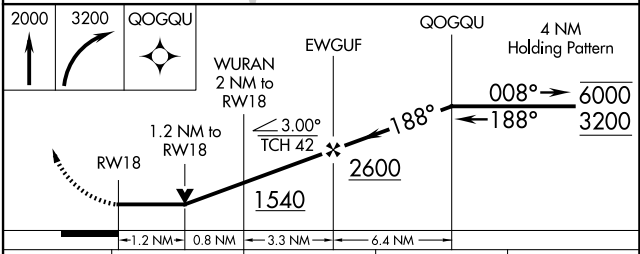
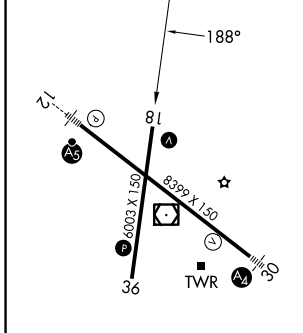
WATERLOO RGNL (A.L.O)

RNP APCH.	MISSED APPROACH: Climb to 2000 then climbing right turn to 3200 direct QOGQU and hold.
Rwy 18 helicopter visibility reduction below 3/4 SM NA.	

ATIS 120.65	DES MOINES APP CON * 118.9 251.15	WATERLOO TOWER * 125.075 (CTAF) 257.8	GND CON 121.9 269.1	UNICOM 122.95
-----------------------	---	---	-------------------------------	-------------------------



ELEV 873	D	TDZE 871
----------	----------	----------



	A	B	C	D
CATEGORY	A	B	C	D
LP MDA	1300-1	429 (500-1)	1300-1¼ 429 (500-1¼)	
LNAV MDA	1340-1	469 (500-1)	1340-1¾ 469 (500-1¾)	
CIRCLING	1360-1 487 (500-1)	1400-1 527 (600-1)	1480-1¾ 607 (700-1¾)	1600-2¼ 727 (800-2¼)

HIRL Rwy 12-30
MIRL Rwy 18-36
REIL Rwy 18 and 36

WATERLOO, IOWA
Amdt 1 13SEP18

42°34'N-92°24'W

WATERLOO RGNL (A.L.O) RNAV (GPS) RWY 18

NC-3, 16 APR 2026 to 14 MAY 2026

NC-3, 16 APR 2026 to 14 MAY 2026