

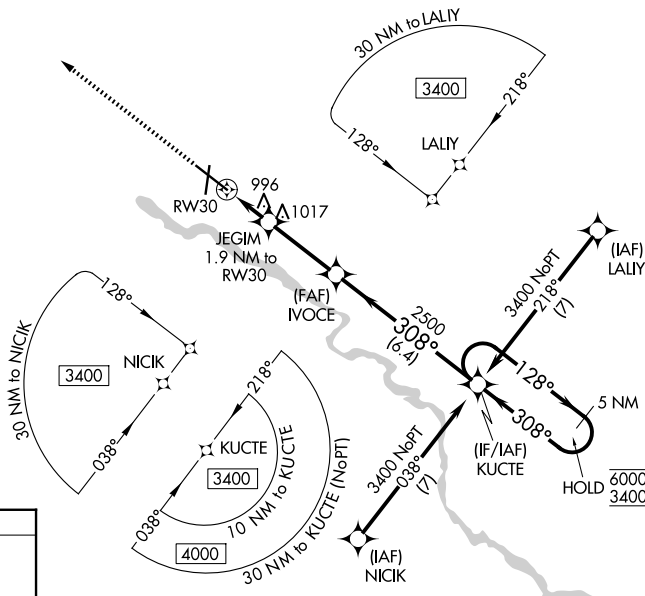
WAAS CH <b>78201</b> <b>W30A</b>	APP CRS <b>308°</b>	Rwy Ldg TDZE <b>868</b> Apt Elev <b>873</b>
--	------------------------	---

# RNAV (GPS) RWY 30

WATERLOO RGNL (A.I.O)

RNP APCH.	MALS	MISSED APPROACH: Climb to 3400 direct EYUCE and hold.
<p>⚠ For uncompensated Baro-VNAV systems, LNAV/VNAV NA below -20°C or above 54°C. Inop table does not apply LPV all Cats.</p> <p>⚠ For inop ALS, increase LNAV/VNAV all Cats visibility to 7/8 SM.</p>		

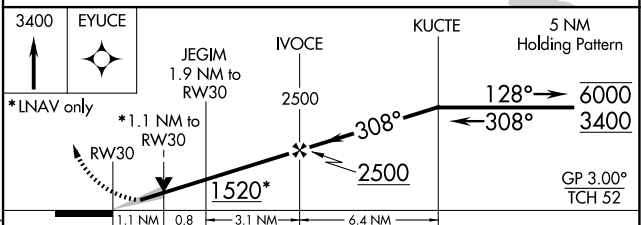
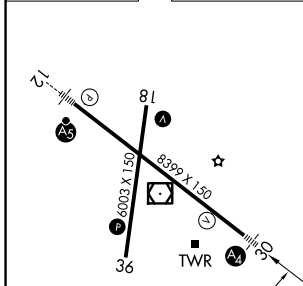
ATIS <b>120.65</b>	DES MOINES APP CON * <b>118.9 251.15</b>	WATERLOO TOWER * <b>125.075</b> (CTAF) <b>257.8</b>	GND CON <b>121.9 269.1</b>	UNICOM <b>122.95</b>
-----------------------	---	--	-------------------------------	-------------------------



NC-3, 16 APR 2026 to 14 MAY 2026

NC-3, 16 APR 2026 to 14 MAY 2026

ELEV 873	<b>D</b>	TDZE 868
----------	----------	----------



CATEGORY	A	B	C	D
LPV DA		1068-3/4	200 (200-3/4)	
LNAV/VNAV DA		1145-3/4	277 (300-3/4)	
LNAV MDA	1260-3/4	392 (400-3/4)	1260-7/8	392 (400-7/8)
CIRCLING	1360-1 487 (500-1)	1400-1 527 (600-1)	1480-1 3/4 607 (700-1 3/4)	1600-2 1/4 727 (800-2 1/4)

HIRL Rwy 12-30   
MIRL Rwy 18-36   
REL Rwy 18 and 36

WATERLOO, IOWA  
Amdt 1 13SEP18

42°34'N-92°24'W

# WATERLOO RGNL (A.I.O)

## RNAV (GPS) RWY 30