

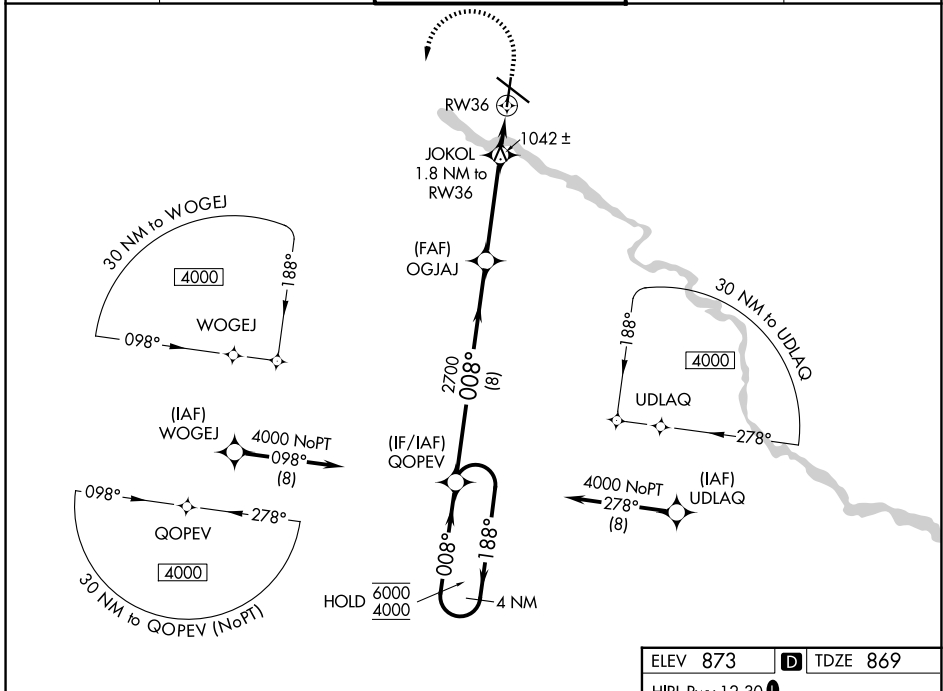
WAAS CH <b>48942</b> <b>W36A</b>	APP CRS <b>008°</b>	Rwy Ldg TDZE Apt Elev	<b>6003</b> <b>869</b> <b>873</b>
--	------------------------	-----------------------------	---

# RNAV (GPS) RWY 36

WATERLOO RGNL (A.I.O)

RNP APCH-GPS.	MISSED APPROACH: Climb to 2000 then climbing left turn to 4000 direct QOPEV and hold.
▼ ▲ For uncompensated Baro-VNAV systems, LNAV/VNAV NA below -20°C or above 54°C.	

ATIS <b>120.65</b>	DES MOINES APP CON * <b>118.9 251.15</b>	WATERLOO TOWER * <b>125.075 (CTAF) 0 257.8</b>	GND CON <b>121.9 269.1</b>	UNICOM <b>122.95</b>
-----------------------	---	---	-------------------------------	-------------------------



NC-3, 16 APR 2026 to 14 MAY 2026

NC-3, 16 APR 2026 to 14 MAY 2026

VGSI and RNAV glidepath not coincident. (VGSI Angle 3.00/TCH 51).		2000	4000	QOPEV
4 NM Holding Pattern		* LNAV only		
6000	← 188°	OGJAJ	JOKOL	RW36
4000	→ 008°	2700	1.8 NM to RW36	
GP 3.00°			* 1.2 NM to RW36	
TCH 40		* 1480		
	8 NM	3.8 NM	0.6 NM	1.2 NM
CATEGORY	A	B	C	D
LPV DA	1069-3/4		200 (200-3/4)	
LNAV/VNAV DA	1190-1		321 (400-1)	
LNAV MDA	1300-1	431 (500-1)	1300-1 1/4	431 (500-1 1/4)
CIRCLING	1360-1 487 (500-1)	1400-1 527 (600-1)	1480-1 3/4 607 (700-1 3/4)	1600-2 1/4 727 (800-2 1/4)

