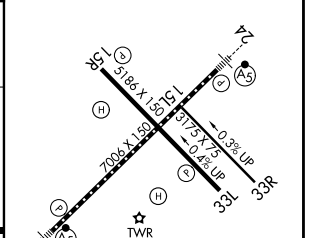
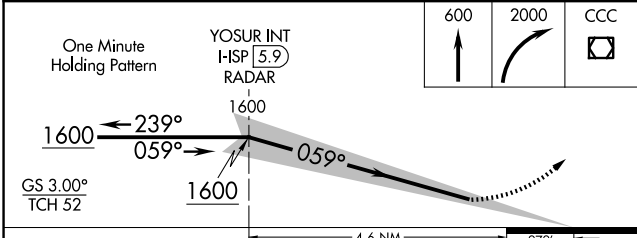
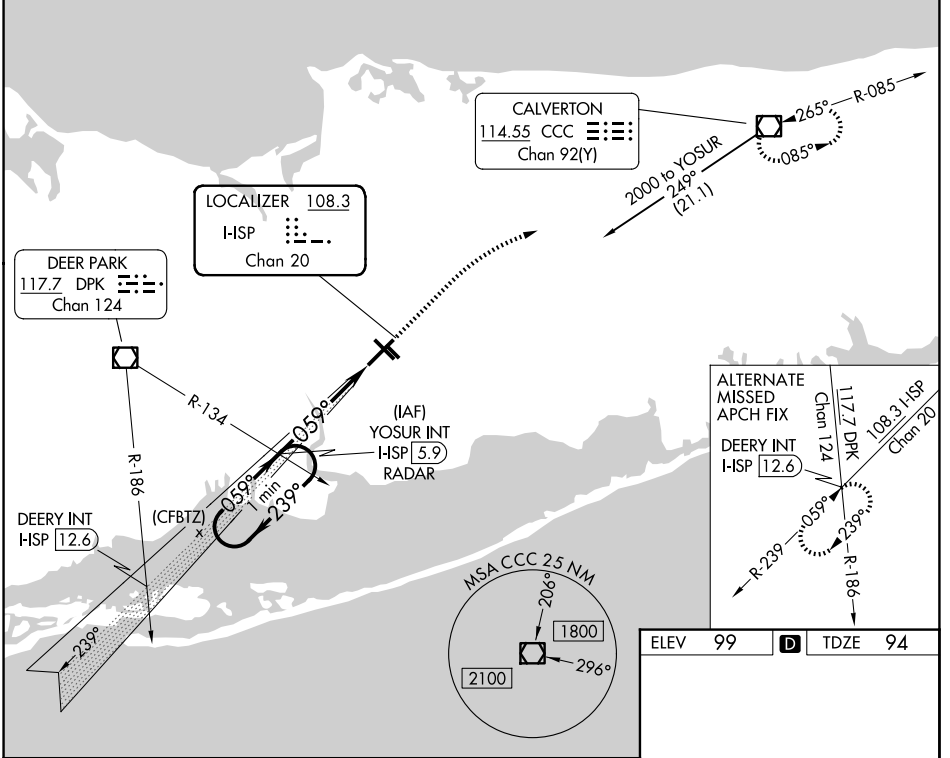


LOC/DME I-SP <b>108.3</b> Chan <b>20</b>	APP CRS <b>059°</b>	Rwy Ldg TDZE Apt Elev	<b>7006</b> <b>94</b> <b>99</b>
--	------------------------	-----------------------------	---------------------------------------

# ILS RWY 6 (SA CAT I & II)

## LONG ISLAND MAC ARTHUR (ISP)

<p>⚠ Procedure NA when tower closed. SA CAT I: Requires specific OPSPEC, MSPEC, or LOA approval and use of HUD to DH. SA CAT II: Reduced lighting: Requires specific OPSPEC, MSPEC, or LOA approval and use of autoland or HUD to touchdown.</p>	MALSR	MISSED APPROACH: Climb to 600 then climbing right turn to 2000 direct CCC VOR/DME and hold.
	<p>ATIS <b>120.725</b></p> <p>NEW YORK APP CON <b>120.05 343.75</b></p> <p>LONG ISLAND TOWER* <b>119.3 (CTAF) 0335.5</b></p>	<p>GND CON <b>135.3</b></p>



CATEGORY	A	B	C	D
S-ILS 6		SA CAT I RA 162/14	150 DA 244	
S-ILS 6		SA CAT II RA 111/12	100 DA 194	

**SA CATEGORY I & II ILS SPECIAL AIRCREW & AIRCRAFT CERTIFICATION REQUIRED**

ELEV 99	D	TDZE 94
---------	---	---------

MIRL Rwy 15R-33L  
 HIRL Rwy 6-24

NE-2, 16 APR 2026 to 14 MAY 2026

NE-2, 16 APR 2026 to 14 MAY 2026