

RNAV 1 - DME/DME/IRU OR GPS.
RADAR required.

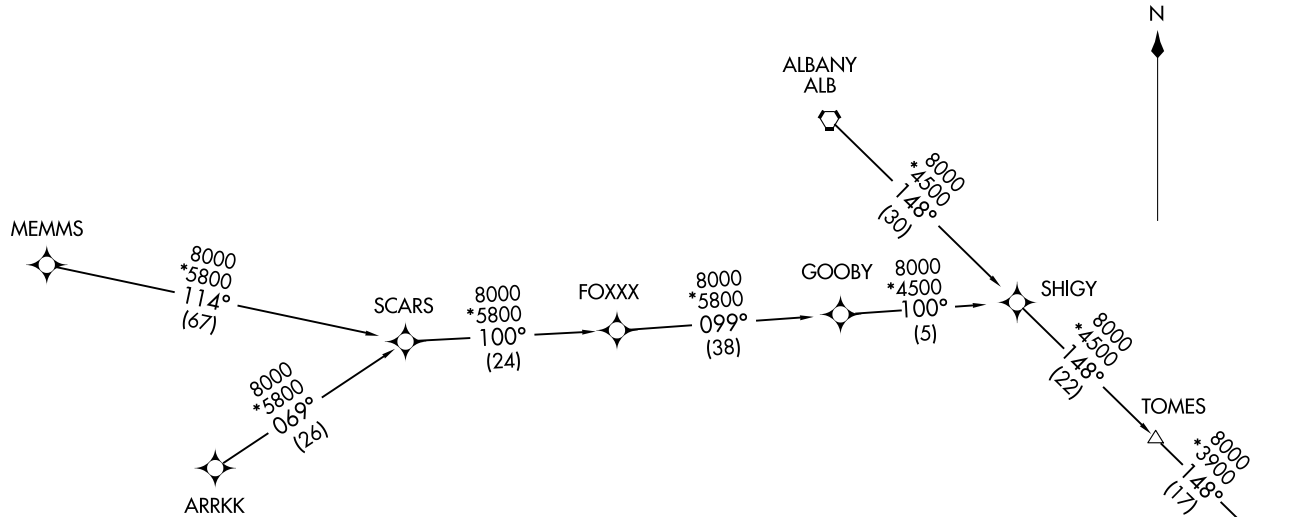
NELIE.NELIE4) 25219
AL-948 (FAA)
NEW YORK, NEW YORK

NEW YORK, NEW YORK

NEW YORK APP CON
120.05 343.75
ISP ATIS
120.725

NELIE FOUR ARRIVAL (RNAV) Transition Routes
(NELIE.NELIE4) 07AUG25

NEW YORK, NEW YORK



NELIE
See following page for arrival routes

ALBANY TRANSITION (ALB.NELIE4):
ARRKK TRANSITION (ARRKK.NELIE4):
MEMMS TRANSITION (MEMMS.NELIE4):

(CONTINUED ON FOLLOWING PAGE)

NOTE: Chart not to scale.

(NELIE.NELIE4) 26022

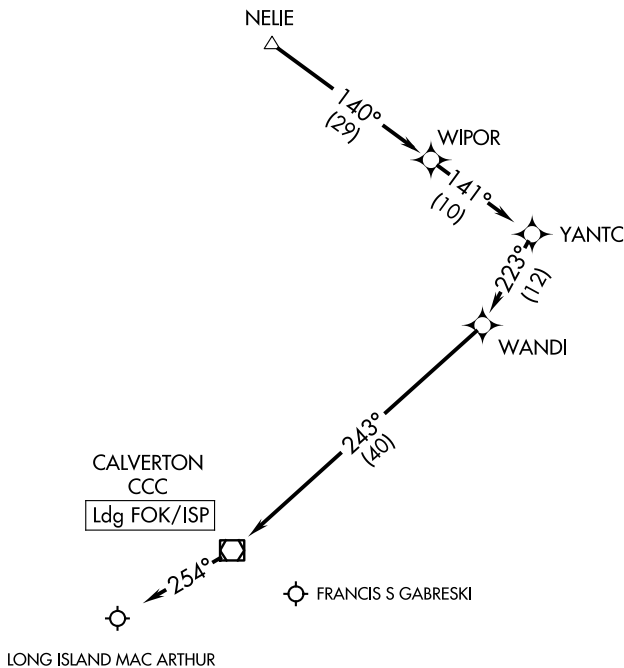
AL-948 (FAA)

NELIE FOUR ARRIVAL (RNAV) Arrival Routes

NEW YORK, NEW YORK

NEW YORK APP CON
120.05 343.75
ISP ATIS
120.725

RNAV 1 - DME/DME/IRU or GPS.
RADAR required.



NOTE: USE CAUTION: Parachute jump activity southeast of CCC VOR/DME AOB 14500 (SR-SS).

Note: Chart not to scale.

ARRIVAL ROUTE DESCRIPTION

LANDING ALL AIRPORTS: From NELIE on track 140° to WIPOR, then on track 141° to YANTC, then on track 223° to WANDI, then on track 243° to CCC VOR/DME, then on heading 254°. Expect RADAR vectors to final approach course.

NELIE FOUR ARRIVAL (RNAV) Arrival Routes

NEW YORK, NEW YORK

(NELIE.NELIE4) 07AUG25

NE-2, 16 APR 2026 to 14 MAY 2026

NE-2, 16 APR 2026 to 14 MAY 2026