

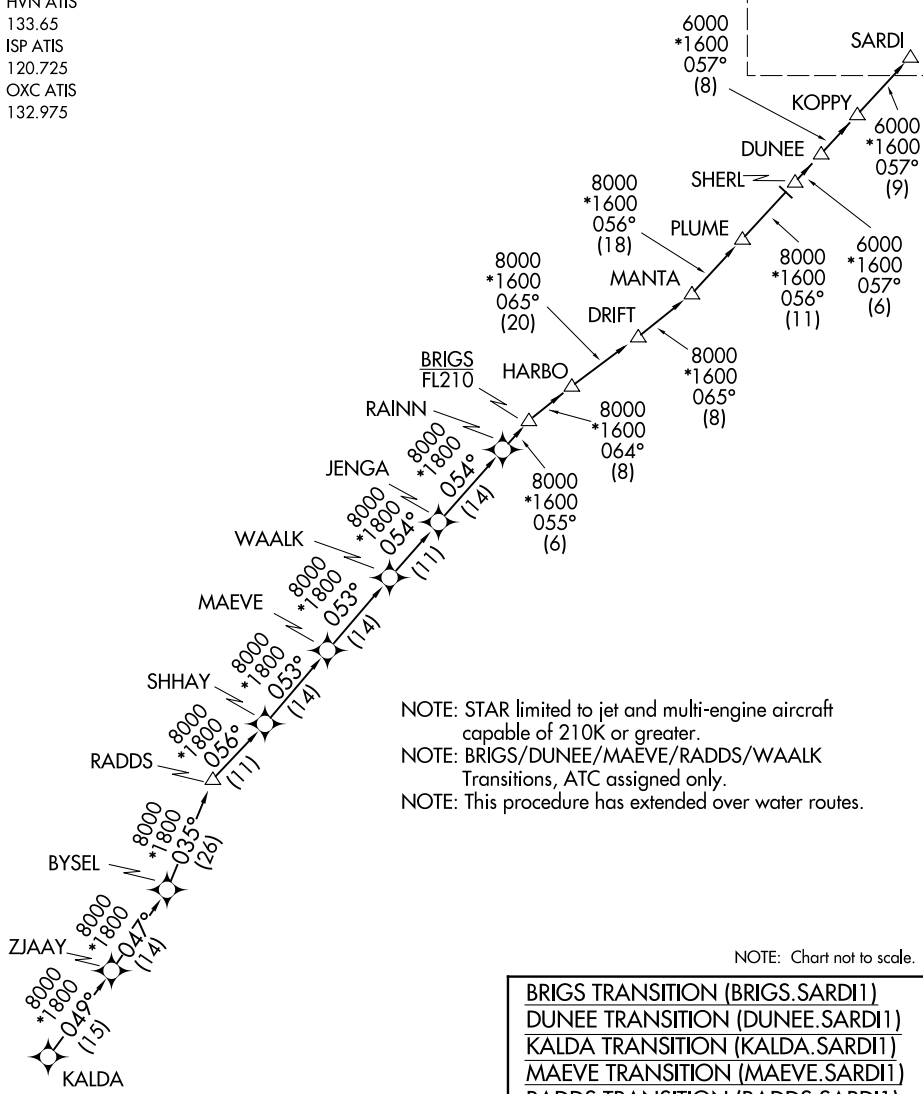
# SARDI ONE ARRIVAL (RNAV) Transition Routes

NEW YORK, NEW YORK

NEW YORK APP CON  
 120.05 343.75  
 BDR ATIS  
 119.15  
 FRG ATIS  
 126.65  
 GON ATIS  
 127.0  
 HVN ATIS  
 133.65  
 ISP ATIS  
 120.725  
 OXC ATIS  
 132.975

RNAV 1 - DME/DME/IRU or GPS.  
 RADAR required.

See following page  
 for Arrival Routes



NOTE: STAR limited to jet and multi-engine aircraft capable of 210K or greater.  
 NOTE: BRIGS/DUNEE/MAEVE/RADDS/WAALK Transitions, ATC assigned only.  
 NOTE: This procedure has extended over water routes.

NOTE: Chart not to scale.

(CONTINUED ON FOLLOWING PAGE)

- BRIGS TRANSITION (BRIGS.SARDI1)
- DUNEE TRANSITION (DUNEE.SARDI1)
- KALDA TRANSITION (KALDA.SARDI1)
- MAEVE TRANSITION (MAEVE.SARDI1)
- RADDS TRANSITION (RADDS.SARDI1)
- WAALK TRANSITION (WAALK.SARDI1)

# SARDI ONE ARRIVAL (RNAV) Transition Routes

NEW YORK, NEW YORK

NE-2, 16 APR 2026 to 14 MAY 2026

NE-2, 16 APR 2026 to 14 MAY 2026

# SARDI ONE ARRIVAL (RNAV) Arrival Routes

NEW YORK, NEW YORK

NEW YORK APP CON

120.05 343.75

BDR ATIS

119.15

FRG ATIS

126.65

GON ATIS

127.0

HVN ATIS

133.65

ISP ATIS

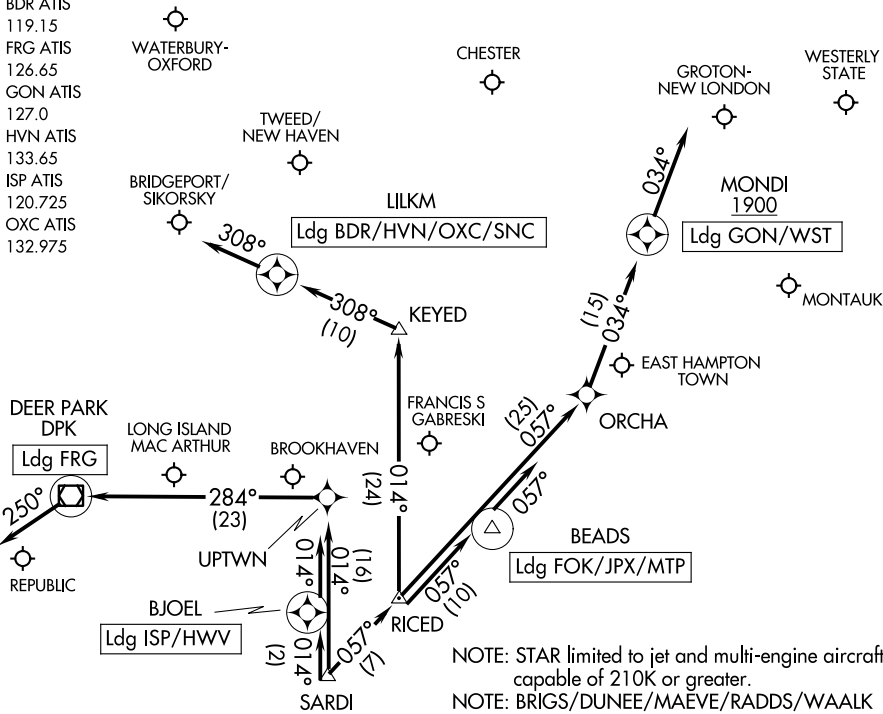
120.725

OXC ATIS

132.975

RNAV 1 - DME/DME/IRU or GPS.

RADAR required.



NOTE: Chart not to scale.

NOTE: STAR limited to jet and multi-engine aircraft capable of 210K or greater.

NOTE: BRIGS/DUNEE/MAEVE/RADDS/WAALK Transitions, ATC assigned only.

NOTE: This procedure has extended over water routes.

## ARRIVAL ROUTE DESCRIPTION

**LANDING BDR/HVN/OXC/SNC:** From SARDI on track 057° to RICED, then on track 014° to KEYED, then on track 308° to LILKM, then on track 308°. Expect RADAR vectors to final approach course.

**LANDING FOK/JPX/MTP:** From SARDI on track 057° to RICED, then on track 057° to BEADS, then on track 057°. Expect RADAR vectors to final approach course.

**LANDING FRG:** From SARDI on track 014° to UPTWN, then on track 284° to DPK VOR/DME, then on track 250°. Expect RADAR vectors to final approach course.

**LANDING GON/WST:** From SARDI on track 057° to RICED, then on track 057° to ORCHA, then on track 034° to cross MONDI at or above 1900, then on track 034°. Expect RADAR vectors to final approach course.

**LANDING ISP/HWV:** From SARDI on track 014° to BJOEL, then on track 014°. Expect RADAR vectors to final approach course.