

TACAN RWY 32

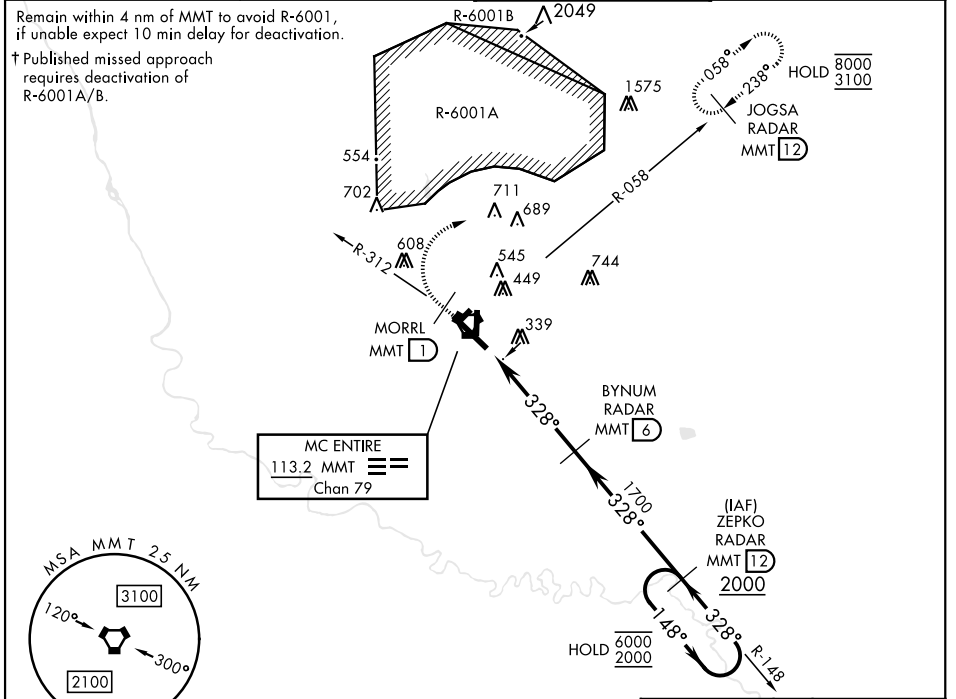
VORTAC MMT 113.2 Chan 79	APCH CRS 328°	Rwy Idg TDZE 243 Arprt Elev 254	[USAF]	MC ENTIRE JNGB (KMMT)
--	-------------------------	---	--------	-----------------------

▼ * When ALS inop, increase CAT AB RVR to 55, vis to 1 mile, CAT CDE RVR to 60, vis to 1½ miles.

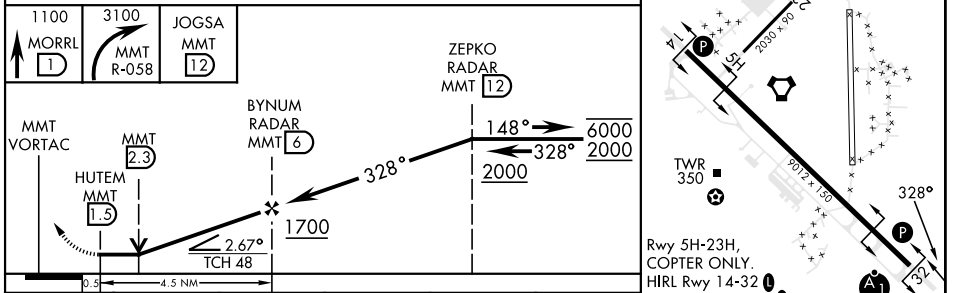
ⓐ ALSF-1

† MISSED APPROACH: Climb to 1100 direct MORRL/1 DME then climbing right turn to 3100 intercept MMT R-058 direct JOGSA/12 DME and hold.

ATIS ★ 327.05	SHAW APP CON 125.4 318.1	TOWER ★ 132.4 (CTAF) 253.5	GND CON 127.625 226.675
-------------------------	------------------------------------	--------------------------------------	-----------------------------------



ELEV 254	TDZE 243
-----------------	-----------------



CATEGORY	A	B	C	D	E
S-32 *	640/24 397 (400-½)		640/40 397 (400-¾)		
CIRCLING	740-1 486 (500-1)	840-1 586 (600-1)	880-1¼ 626 (700-1¾)	940-2¼ 686 (700-2¼)	1020-2¾ 766 (800-2¾)
	FAF to MAP 4.5 NM				
	Knots	60	90	120	150 180
	Min:Sec	4:30	3:00	2:15	1:48 1:30

TACAN RWY 32

SE-2, 16 APR 2026 to 14 MAY 2026

SE-2, 16 APR 2026 to 14 MAY 2026