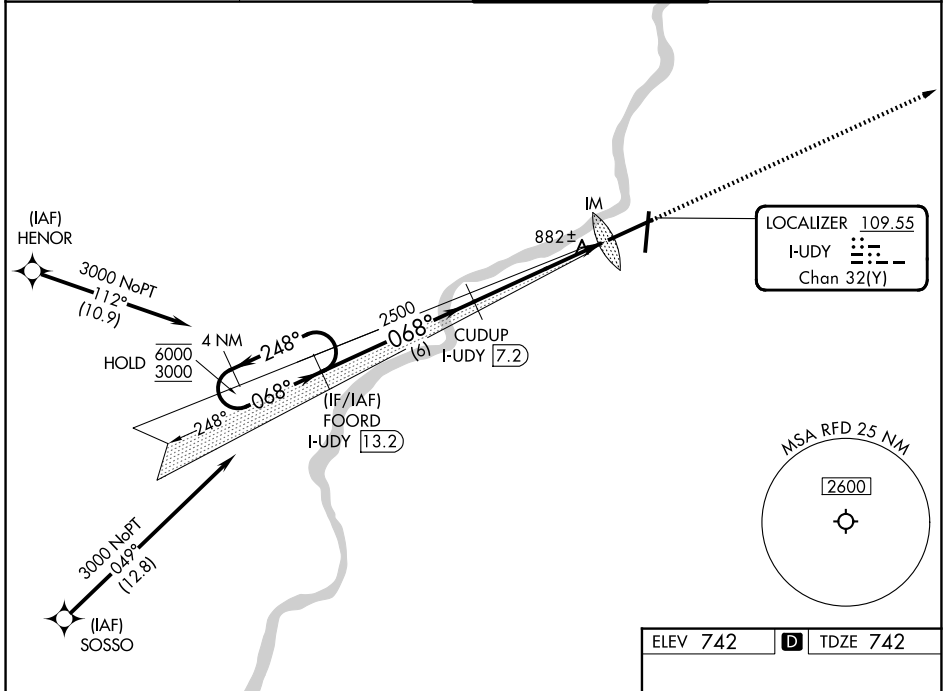


LOC/DME I-UDY <b>109.55</b> Chan <b>32 (Y)</b>	APP CRS <b>068°</b>	Rwy Ldg <b>10002</b> TDZE <b>742</b> Apt Elev <b>742</b>
--	------------------------	--

**ILS RWY 7 (SA CAT I)**  
CHICAGO/ROCKFORD INTL (RFD)

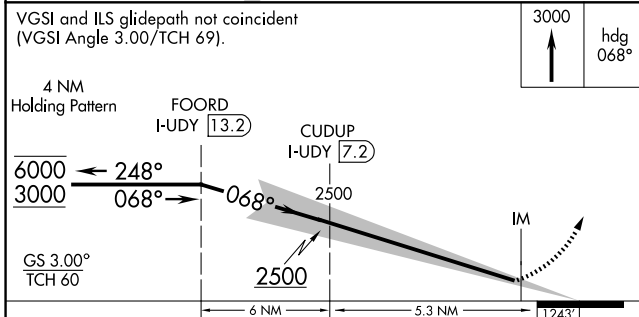
RNP APCH - GPS. From HENOR or SOSSO. RADAR required.		ALS-F-2	MISSED APPROACH: Climb to 3000 on heading 068°. Expect RADAR vectors. (RADAR required).
Requires specific OPSPEC, MSPEC, or LOA approval.			

ATIS <b>127.6</b>	ROCKFORD APP CON <b>121.0 327.0</b>	ROCKFORD TOWER <b>118.1 290.375</b>	GND CON <b>121.9 290.375</b>
----------------------	--	--	---------------------------------

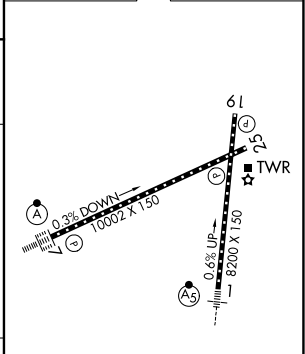


EC-3, 16 APR 2026 to 14 MAY 2026

EC-3, 16 APR 2026 to 14 MAY 2026



ELEV 742	TDZE 742
----------	----------



CATEGORY	A	B	C	D
----------	---	---	---	---

S-ILS 7	RA 164/14 150 DA 892			
---------	----------------------	--	--	--

**SA CATEGORY I ILS - SPECIAL AIRCREW & AIRCRAFT CERTIFICATION REQUIRED**

REIL Rwy 19 and 25  
HIRL Rwy 1-19 and 7-25  
TDZ/CL Rwy 1 and 7