

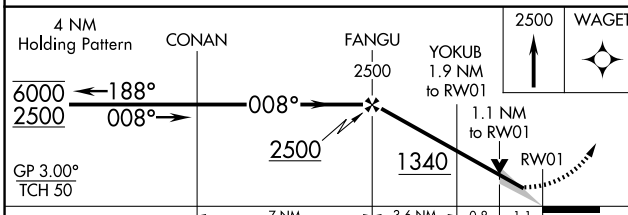
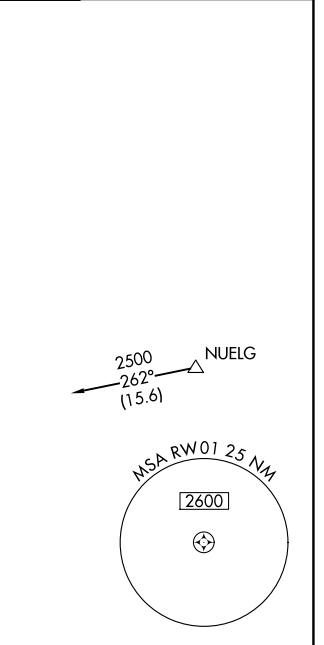
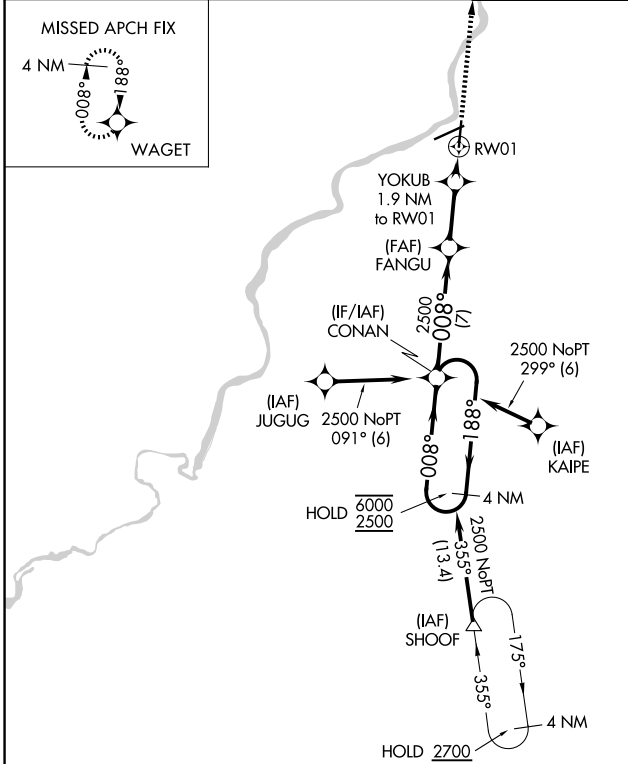
WAAS CH 42720 W01A	APP CRS 008°	Rwy Ldg TDZE Apt Elev	8199 729 742
---------------------------------	------------------------	-----------------------------	---

RNAV (GPS) RWY 1

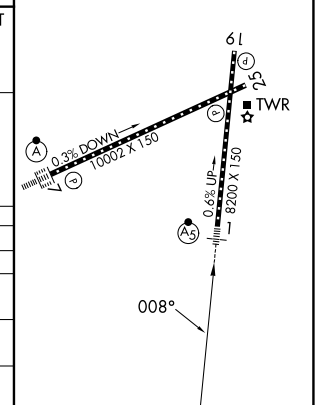
CHICAGO/ROCKFORD INTL (RFD)

RNP APCH - GPS.	MALSR	MISSED APPROACH: Climb to 2500 direct WAGET and hold.
<p>For uncompensated Baro-VNAV systems, procedure NA below -16°C or above 54°C. For inop ALS, increase LNAV Cats C and D visibility to RVR 6000. *RVR 1800 authorized with use of FD or AP or HUD to DA.</p>		

ATIS 127.6	ROCKFORD APP CON 121.0 327.0	ROCKFORD TOWER 118.1 290.375	GND CON 121.9 290.375
----------------------	--	--	---------------------------------



ELEV 742	D TDZE 729
REIL Rwy 19 and 25	
HIRL Rwy 1-19 and 7-25	
TDZ/CL Rwy 1 and 7	



CATEGORY	A	B	C	D
LPV DA*	929/24		200 (200-½)	
LNAV/VNAV DA	1200/60		471 (500-1¼)	
LNAV MDA	1120/24	391 (400-½)	1120/35	391 (400-¾)
CIRCLING	1220-1 478 (500-1)	1280-1 538 (600-1)	1320-1½ 578 (600-1½)	1460-2¼ 718 (800-2¼)

EC-3, 16 APR 2026 to 14 MAY 2026

EC-3, 16 APR 2026 to 14 MAY 2026