

LOC/DME I-DHY <b>110.1</b> Chan <b>38</b>	APP CRS <b>247°</b>	Rwy Ldg TDZE <b>41</b> Apt Elev <b>42</b>	<b>8003</b>
---	------------------------	---	-------------

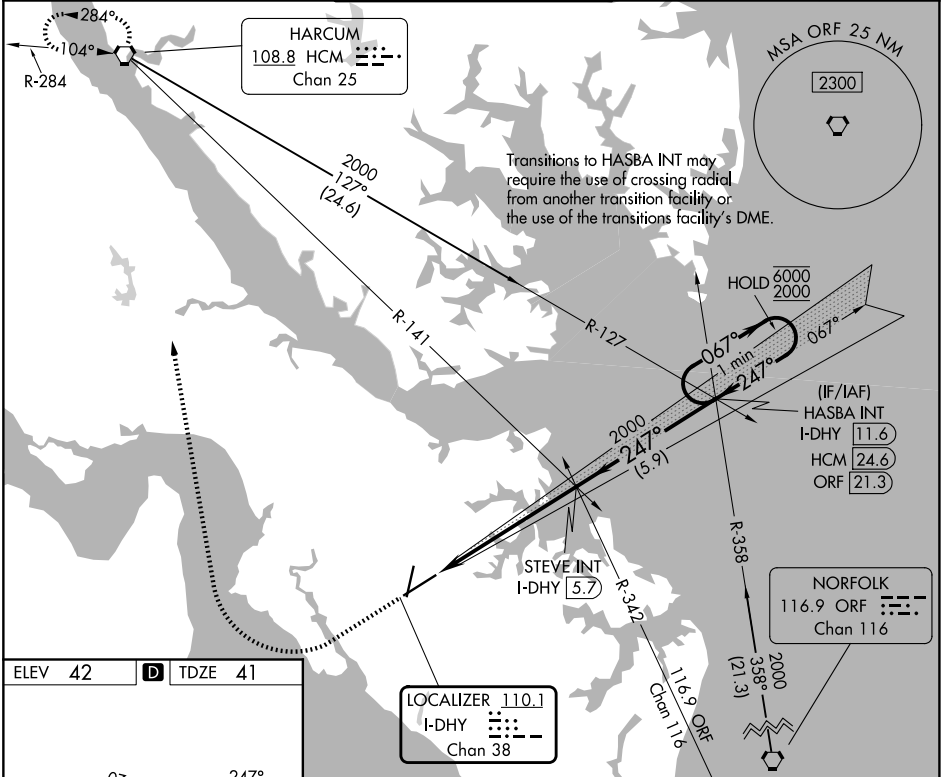
# ILS or LOC RWY 25

NEWPORT NEWS/WILLIAMSBURG INTL (PHF)

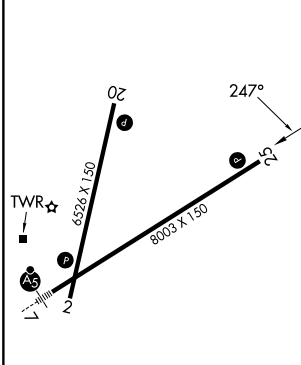
**V** VDP NA when using ORF altimeter setting. When local altimeter setting not received, use ORF altimeter setting and increase S-ILS 25 DA to 289 feet; increase all MDAs 60 feet and S-LOC 25 visibility Cat C/D 1/2 SM, and Circling visibility Cat C/D 1/2 SM.

MISSED APPROACH: Climb to 2000 then right turn direct HCM VORTAC and hold.

ATIS <b>128.65</b>	NORFOLK APP CON <b>125.7 335.625</b>	NEWPORT NEWS TOWER* <b>118.7 (CTAF) 348.6</b>	GND CON <b>121.9 348.6</b>	UNICOM <b>122.95</b>
-----------------------	---	--	-------------------------------	-------------------------



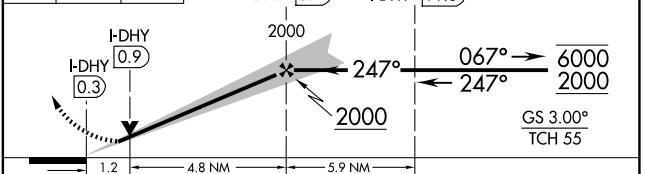
ELEV 42	<b>D</b>	TDZE 41
---------	----------	---------



REIL Rws 20 and 25  
HIRL Rws 2-20 and 7-25  
FAF to MAP 6 NM

Knots	60	90	120	150	180
Min:Sec	6:00	4:00	3:00	2:24	2:00

2000 HCM VGSI and ILS glidepath not coincident (VGSI Angle 3.00/TCH 71). One Minute Holding Pattern



CATEGORY	A	B	C	D
S-ILS 25	241-3/4 200 (200-3/4)			
S-LOC 25	480-1	439 (500-1)	480-1 1/4	439 (500-1 1/4)
CIRCLING	520-1 478 (500-1)	540-1 498 (500-1)	760-2 718 (800-2)	780-2 1/4 738 (800-2 1/4)

NE-3, 16 APR 2026 to 14 MAY 2026

NE-3, 16 APR 2026 to 14 MAY 2026