

LOC/DME I-FJQ <b>109.3</b> Chan <b>30</b>	APP CRS <b>202°</b>	Rwy Ldg <b>6526</b> TDZE <b>42</b> Apt Elev <b>42</b>
---	------------------------	---

# LOC RWY 20

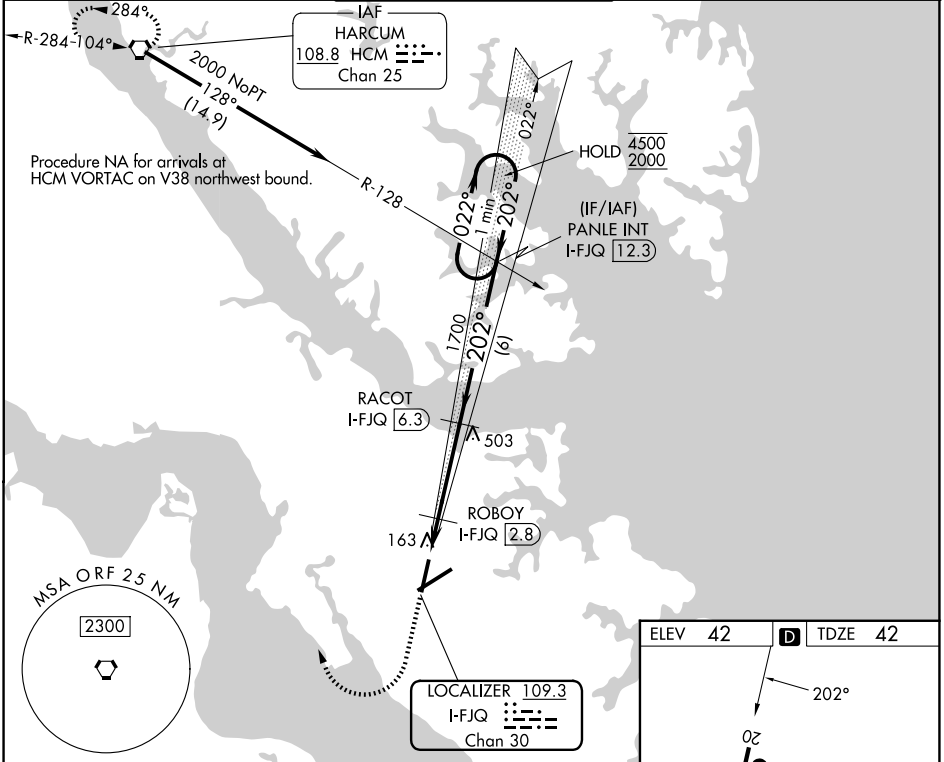
NEWPORT NEWS/WILLIAMSBURG INTL (PHF)

DME required.

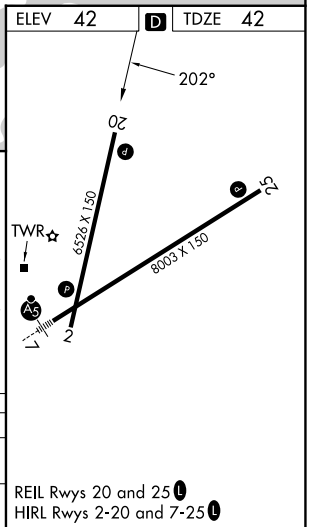
▼ Rwy 20 helicopter visibility reduction below 3/4 SM NA. VDP NA when using ORF altimeter setting. When local altimeter setting not received, use ORF altimeter setting and increase all MDAs 60 feet and S-LOC 20 visibility Cat C/D 1/4 SM, and Circling visibility Cat C/D 1/4 SM.

MISSED APPROACH: Climb to 2000 then right turn direct HCM VORTAC and hold.

ATIS <b>128.65</b>	NORFOLK APP CON <b>125.7 335.625</b>	NEWPORT NEWS TOWER ★ <b>118.7 (CTAF) 257.9 348.6</b>	GND CON <b>121.9 348.6</b>	UNICOM <b>122.95</b>
-----------------------	---	---	-------------------------------	-------------------------



2000	HCM	PANLE INT I-FJQ 12.3	One Minute Holding Pattern
↑	↻	RACOT I-FJQ 6.3	
		ROBOY I-FJQ 2.8	
		I-FJQ 1.3	
		580	1700
		3.00°	022° → 4500
		TCH 43	← 202° 2000
		1.1	0.5 NM
		3.5 NM	6 NM
CATEGORY	A	B	C
S-LOC 20	420-1 378 (400-1)		
CIRCLING	520-1 478 (500-1)	540-1 498 (500-1)	760-2 718 (800-2)
			780-2 1/4 738 (800-2 1/4)



NE-3, 16 APR 2026 to 14 MAY 2026

NE-3, 16 APR 2026 to 14 MAY 2026