

WAAS CH 61020 W02A	APP CRS 022°	Rwy Ldg TDZE Apt Elev	6526 38 42
--	------------------------	-----------------------------	---------------------------------------

RNAV (GPS) RWY 2

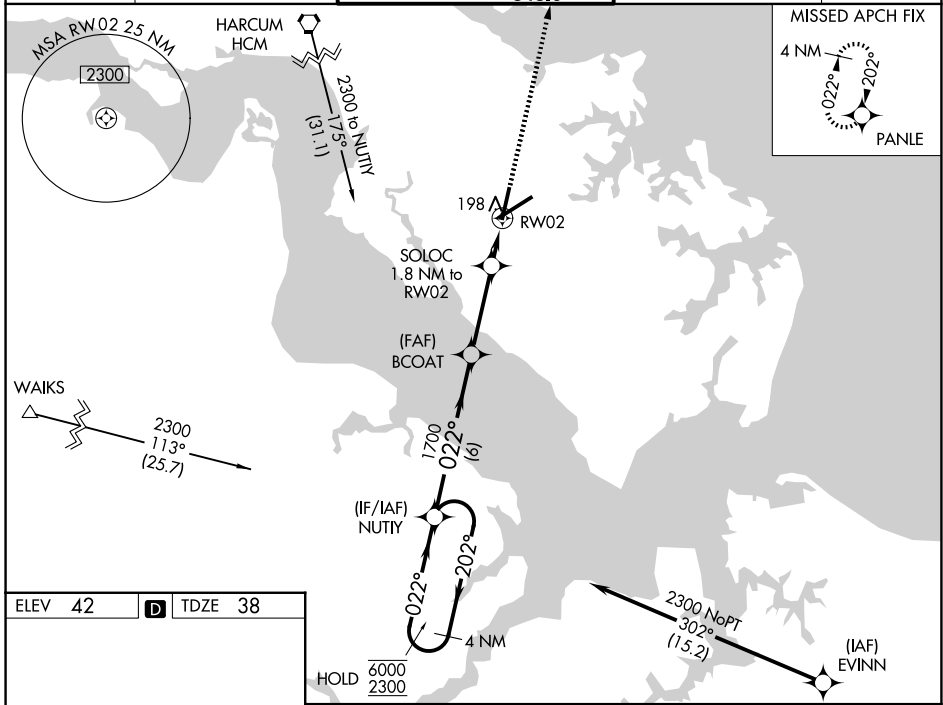
NEWPORT NEWS/WILLIAMSBURG INTL (PHF)

RNP APCH - GPS.

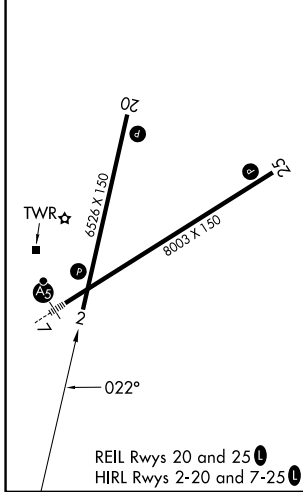
⚠ For uncompensated Baro-VNAV systems, LNAV/VNAV NA below -7°C or above 54°C. Baro-VNAV and VDP NA when using ORF altimeter setting. When local altimeter setting not received, use ORF altimeter setting and increase LPV DA to 289 feet; increase LNAV/VNAV DA to 524 feet and all visibilities ½ SM. Increase all MDAs 60 feet and LNAV visibility Cat C/D ¼ SM, and Circling visibility Cat C/D ¼ SM.

MISSED APPROACH: Climb to 2000 direct PANLE and hold.

ATIS 128.65	NORFOLK APP CON 125.7 335.625	NEWPORT NEWS TOWER* 118.7 (CTAF) 0 257.9 348.6	GND CON 121.9 348.6	UNICOM 122.95
-----------------------	---	--	-------------------------------	-------------------------



ELEV 42	D	TDZE 38
---------	----------	---------



4 NM Holding Pattern	NUTTY	BCOAT	SOLOC 1.8 NM to RWY 2	2000	PANLE
6000	1700	1700	1.2 NM to RWY 2	↑	✦
2300	660	660	0.6		
GP 3.00° TCH 60					

CATEGORY	A	B	C	D
LPV DA	241-1 203 (200-1)			
LNAV/VNAV DA	460-1¼ 422 (500-1¼)			
LNAV MDA	460-1	422 (500-1)	460-1¼	422 (500-1¼)
CIRCLING	520-1 478 (500-1)	540-1 498 (500-1)	760-2 718 (800-2)	780-2¼ 738 (800-2¼)

NE-3, 16 APR 2026 to 14 MAY 2026

NE-3, 16 APR 2026 to 14 MAY 2026