

WAAS CH 97420 W20A	APP CRS 202°	Rwy Ldg TDZE Apt Elev	6526 42 42
--	------------------------	-----------------------------	---------------------------------------

RNAV (GPS) RWY 20

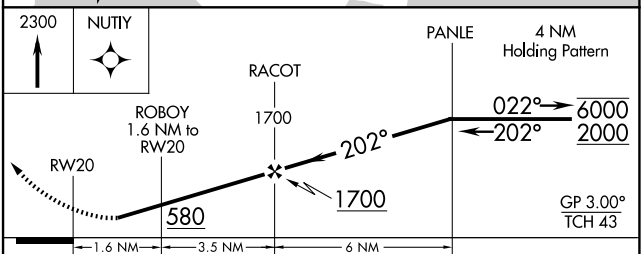
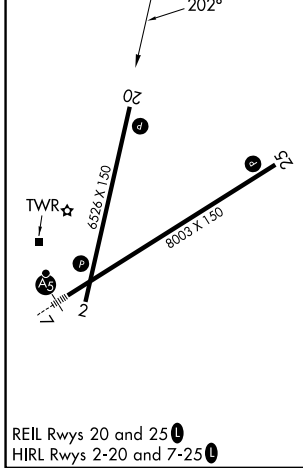
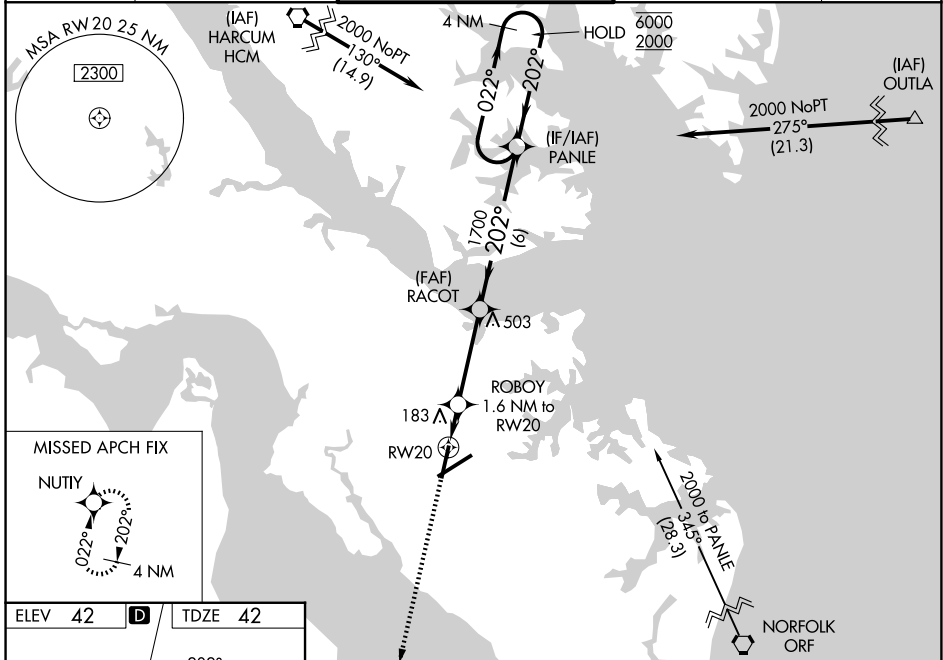
NEWPORT NEWS/WILLIAMSBURG INTL (PHF)

RNP APCH - GPS.

- ▼ For uncompensated Baro-VNAV systems, LNAV/VNAV NA below -7°C or above 54°C. Rwy 20 helicopter visibility reduction below ¼ SM NA. Baro-VNAV NA when using ORF altimeter setting.
- ▲ When local altimeter setting not received, use ORF altimeter setting and increase LPV DA to 427 feet and all visibilities ½ SM. Increase LNAV/VNAV DA to 522 feet and all visibilities ½ SM. Increase all MDAs 60 feet and LNAV visibility Cat C/D ½ SM, and Circling visibility Cat C/D ½ SM.

MISSED APPROACH:
Climb to 2300 direct NUTY and hold.

ATIS 128.65	NORFOLK APP CON 125.7 335.625	NEWPORT NEWS TOWER ★ 118.7 (CTAF) 257.9 348.6	GND CON 121.9 348.6	UNICOM 122.95
-----------------------	---	---	-------------------------------	-------------------------



ELEV 42	D	TDZE 42		
2300	NUTY			
RW20	ROBOY 1.6 NM to RW20	RACOT 1700		
		PANLE 1700		
		6000		
		2000		
		GP 3.00°		
		TCH 43		
	1.6 NM	3.5 NM		
		6 NM		
CATEGORY	A	B	C	D
LPV DA	379-1		337 (400-1)	
LNAV/VNAV DA	440-1½		398 (400-1½)	
LNAV MDA	440-1	398 (400-1)	440-1½	398 (400-1½)
CIRCLING	520-1 478 (500-1)	540-1 498 (500-1)	760-2 718 (800-2)	780-2¼ 738 (800-2¼)

NE-3, 16 APR 2026 to 14 MAY 2026

NE-3, 16 APR 2026 to 14 MAY 2026