

WAAS CH <b>45510</b> <b>W25A</b>	APP CRS <b>247°</b>	Rwy Ldg <b>8003</b> TDZE <b>41</b> Apt Elev <b>42</b>
--	------------------------	---

# RNAV (GPS) RWY 25

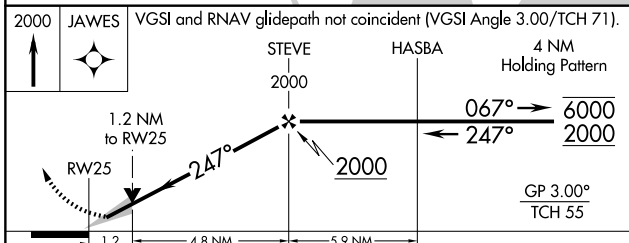
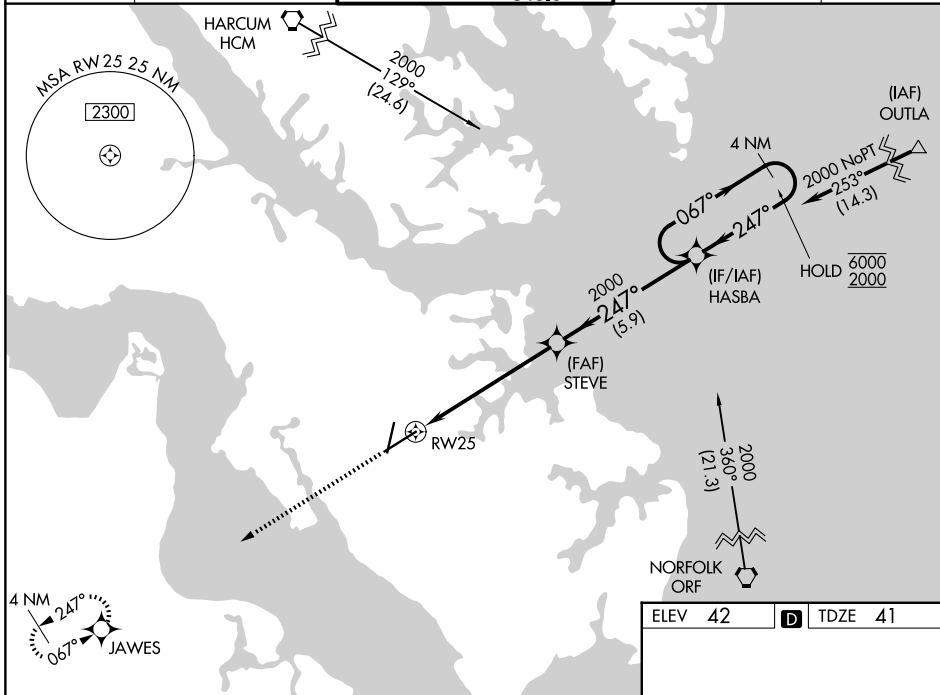
NEWPORT NEWS/WILLIAMSBURG INTL (PHF)

RNP APCH - GPS.

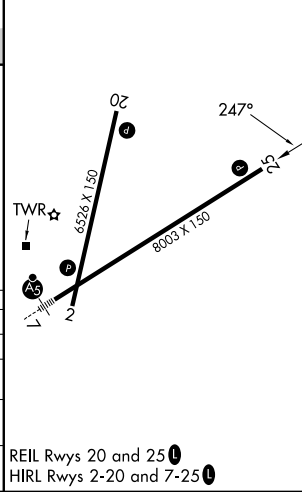
**▼** For uncompensated Baro-VNAV systems, LNAV/VNAV NA below -7°C or above 54°C. Baro-VNAV and VDP NA when using ORF altimeter setting. When local altimeter setting not received, use ORF altimeter setting and increase LPV DA to 289 feet; increase LNAV/VNAV DA to 564 feet and all visibilities ½ SM. Increase all MDAs 60 feet and LNAV visibility Cat C/D ½ SM, and Circling visibility Cat C/D ¼ SM.

**MISSED APPROACH:**  
Climb to 2000 direct JAWES and hold.

ATIS <b>128.65</b>	NORFOLK APP CON <b>125.7 335.625</b>	NEWPORT NEWS TOWER * <b>118.7 (CTAF) 257.9 348.6</b>	GND CON <b>121.9 348.6</b>	UNICOM <b>122.95</b>
-----------------------	---	---	-------------------------------	-------------------------



ELEV 42	<b>D</b> TDZE 41
---------	------------------



CATEGORY	A	B	C	D
LPV DA		241-¾	200 (200-¾)	
LNAV/VNAV DA		480-1¼	439 (500-1¼)	
LNAV MDA	480-1	439 (500-1)	480-1¼	439 (500-1¼)
CIRCLING	520-1 478 (500-1)	540-1 498 (500-1)	760-2 718 (800-2)	780-2 ½ 738 (800-2½)

REIL Rwy 20 and 25  
HIRL Rwy 2-20 and 7-25

NE-3, 16 APR 2026 to 14 MAY 2026

NE-3, 16 APR 2026 to 14 MAY 2026