


WAAS CH 45607 W07A	APP CRS 067°	Rwy Ldg 8003 TDZE 40 Apt Elev 42
--	------------------------	---

RNAV (GPS) RWY 7

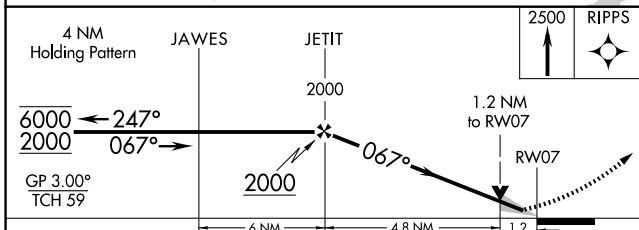
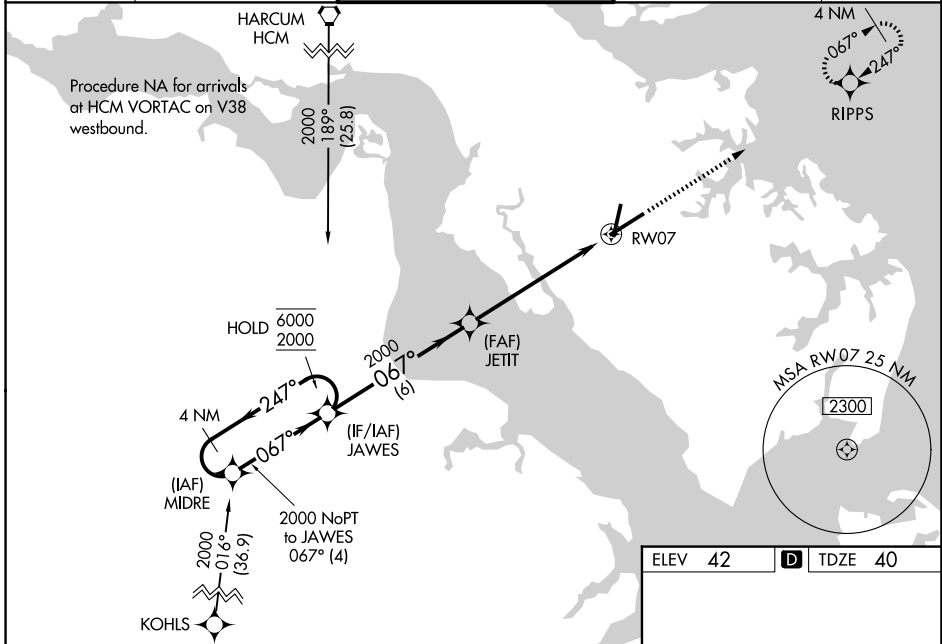
NEWPORT NEWS/WILLIAMSBURG INTL (PHF)

RNP APCH - GPS.

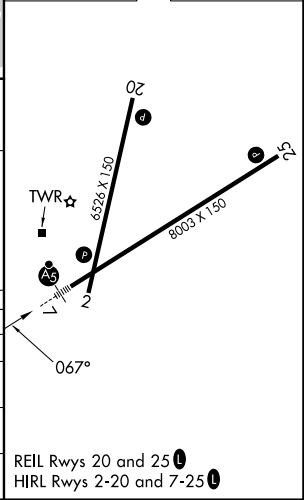
▼ For uncompensated Baro-VNAV systems, LNAV/VNAV NA below -7°C or above 54°C.
 ▲ Baro-VNAV and VDP NA when using ORF altimeter setting. When local altimeter setting not received, use ORF altimeter setting and increase LPV DA to 317 feet; increase LNAV/VNAV DA to 548 feet and visibility to RVR 5500 all Cats; increase all MDAs 80 feet and LNAV visibility Cat C/D to RVR 5500; increase Circling visibility Cat C ¼ SM and Cat D ½ SM.

MALSRL
 MISSED APPROACH:
 Climb to 2500 direct RIPPS and hold, continue climb-in-hold to 2500.

ATIS 128.65	NORFOLK APP CON 125.7 335.625	NEWPORT NEWS TOWER * 118.7 (CTAF) 257.9 348.6	GND CON 121.9 348.6	UNICOM 122.95
-----------------------	---	---	-------------------------------	-------------------------



ELEV 42	D TDZE 40
---------	-----------



CATEGORY	A	B	C	D
LPV DA		243/24	203 (300-½)	
LNAV/VNAV DA		474/40	434 (500-¾)	
LNAV MDA	480/24	440 (500-½)	480/40	440 (500-¾)
CIRCLING	520-1 478 (500-1)	540-1 498 (500-1)	760-2 718 (800-2)	780-2 ¼ 738 (800-2 ¼)

NE-3, 16 APR 2026 to 14 MAY 2026

NE-3, 16 APR 2026 to 14 MAY 2026