

WAAS CH <b>58115</b> <b>W06A</b>	APP CRS <b>058°</b>	Rwy ldg TDZE Apt Elev	<b>9009</b> <b>1051</b> <b>1051</b>
--	------------------------	-----------------------------	---

# RNAV (GPS) RWY 6

SPRINGFIELD/BECKLEY MUNI (SGH)

RNP APCH - GPS

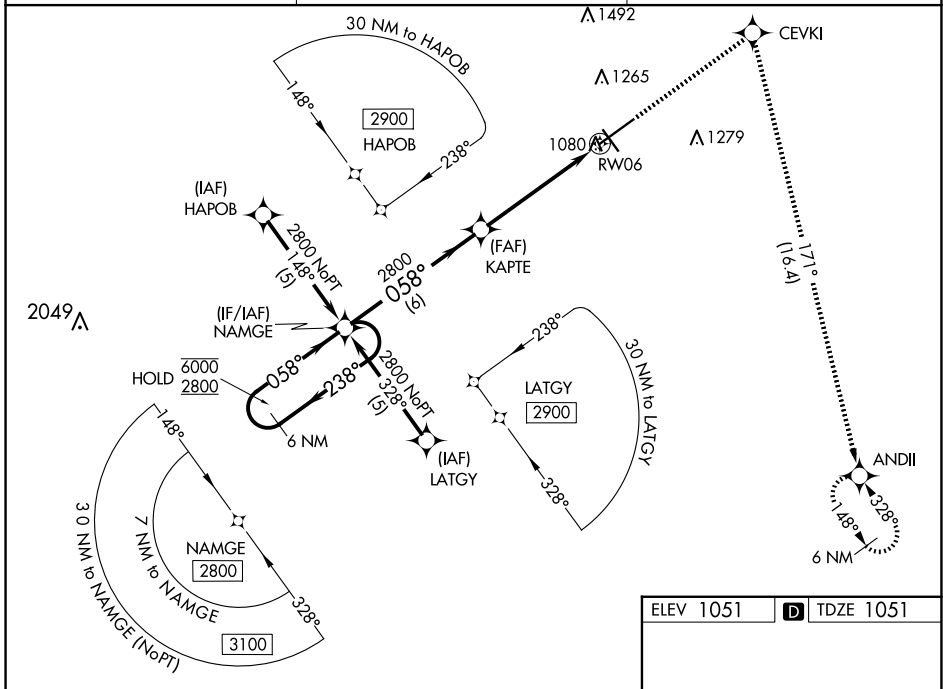
**⚠** Rwy 6 helicopter visibility reduction below 3/4 SM NA.  
For uncompensated Baro-VNAV systems, LNAV/VNAV NA below -17°C or above 54°C

MISSED APPROACH: Climb to 3000  
direct CEVKI and right turn on track 171°  
to ANDII and hold.

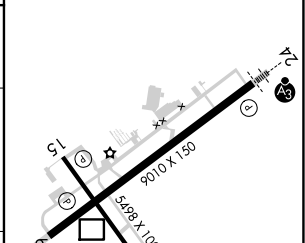
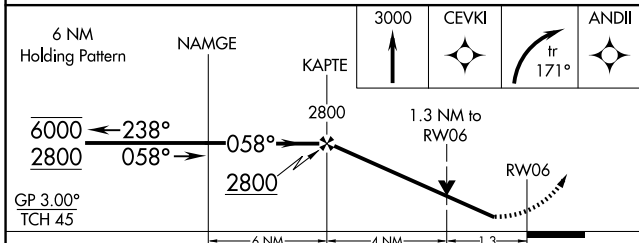
AWOS-3PT  
**134.975**

COLUMBUS APP CON  
**118.85 269.275**

UNICOM  
**122.95 (CTAF) ①**



ELEV 1051 **D** TDZE 1051



CATEGORY	A	B	C	D
LPV DA		1354-7/8	303 (400-7/8)	
LNAV/VNAV DA		1429-1	378 (400-1)	
LNAV MDA	1500-1	449 (500-1)	1500-1 3/8 449 (500-1 3/8)	
<b>C</b> CIRCLING	1500-1 449 (500-1)	1580-1 529 (600-1)	1580-1 1/2 529 (600-1 1/2)	1620-2 569 (600-2)

HIRL Rwy 6-24 ①

MIRL Rwy 15-33 ①

REIL Rws 6, 15 and 33 ①

EC-2, 16 APR 2026 to 14 MAY 2026

EC-2, 16 APR 2026 to 14 MAY 2026