

MARIETTA, GEORGIA

# RNAV (GPS) RWY 11

APCH CRS <b>109°</b>	Rwy Idg <b>10,002</b>
	TDZE <b>1069</b>
	Arprt Elev <b>1069</b>

- (USAF)

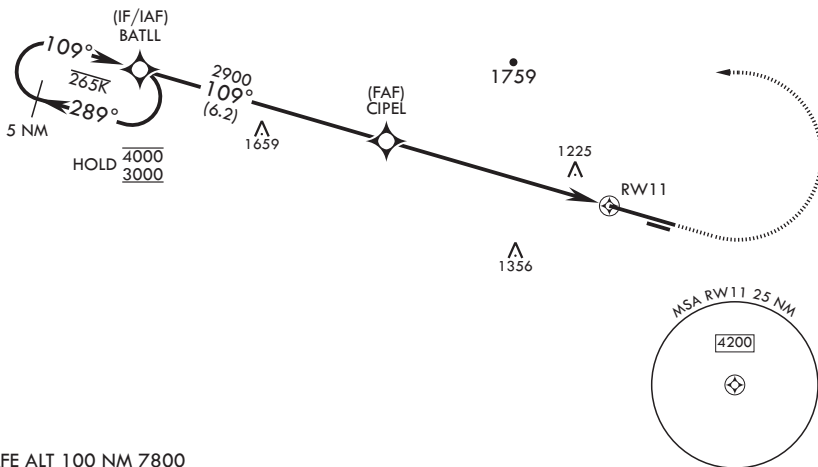
DOBBINS ARB (KMGE)

RNP APCH. DME/DME RNP-0.3 NA	ALSIF-1	MISSED APPROACH: Climb to 2000 then climbing left turn to 3000 direct BATLL and hold.
<p>▼ * When ALS inop, increase vis to 1 3/8 miles.</p> <p>** When ALS inop, increase CAT AB RVR to 55 and vis to 1 mile, CAT CDE vis to 1 1/2 miles.</p>		

ATIS★ <b>269.5</b>	ATLANTA APP CON/DEP CON <b>121.0 268.7</b>	TOWER★ <b>120.75 370.875</b>	GND CON <b>125.3 275.8</b>	ASR
-----------------------	---	---------------------------------	-------------------------------	-----

\*\*\* Circling NA N of Rwy 11-29 for CAT DE aircraft. Circling to assault strip not authorized.

LNAV/VNAV NA below -17°C or above 54°C.



EMERG SAFE ALT 100 NM 7800

5 NM Holding Pattern		2000	3000	BATLL	ELEV 1069	TDZE 1069
GP 3.00° TCH 58		2900	1.5 NM to RWY 11	RWY 11		
		5.6 NM				
CATEGORY	A	B	C	D	E	
LNAV/VNAV DA*	1568/50		499	(500-1)		
LNAV MDA**	1600/40	531 (600-¾)	1600/55	531	(600-1)	
CIRCLING***	1600-1 531 (600-1)	1620-1 551 (600-1)	1760-2 691 (700-2)	1760-2¼ 691 (700-2¼)	1760-2½ 691 (700-2½)	HIRL all Rwys REIL Rwys 11, 29

MARIETTA, GEORGIA

33°55'N - 84°31'W

DOBBINS ARB (KMGE)

Amdt 3 11JUL24

# RNAV (GPS) RWY 11

SE-4, 16 APR 2026 to 14 MAY 2026

SE-4, 16 APR 2026 to 14 MAY 2026