


MARIETTA, GEORGIA

# RNAV (GPS) RWY 29

APCH CRS <b>289°</b>	Rwy ldg TDZE Arprt Elev	<b>10,002</b> <b>1014</b> <b>1069</b>
-------------------------	-------------------------------	---

- (USAF)

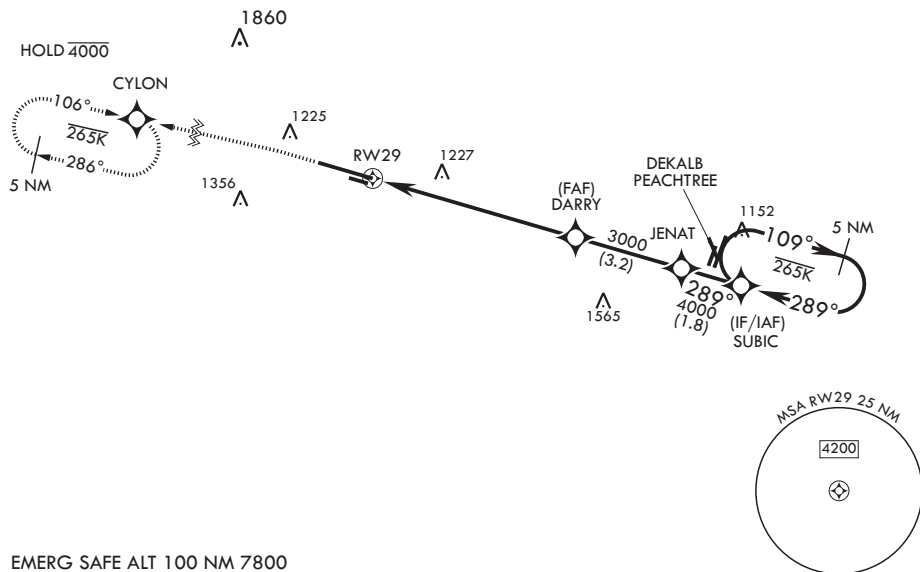
DOBBINS ARB (KMGE)

RNP APCH. DME/DME RNP- 0.3 NA	SALS 	MISSED APPROACH: Climb to 2000 then climbing left turn to 3000 direct CYLON and hold.
<p><b>▼</b> * When ALS inop, increase vis to 1 3/8 miles. ** When ALS inop, increase CAT AB RVR to 55 and vis to 1 mile, CAT CDE vis to 1 3/8 miles.</p>		





ATIS* <b>269.5</b>	ATLANTA APP CON/DEP CON <b>121.0 268.7</b>	TOWER* <b>120.75 370.875</b>	GND CON <b>125.3 275.8</b>	ASR
-----------------------	---	---------------------------------	-------------------------------	-----

\*\*\* Circling not authorized N of Rwy 11-29 for CAT DE. Circling to assault strip not authorized.

For uncompensated Baro-VNAV systems, LNAV/VNAV NA below -17°C or above 54°C.



EMERG SAFE ALT 100 NM 7800

<p>2000 crs 289°</p> <p>3000</p> <p>CYLON </p> <p>5 NM Holding Pattern</p> <p>ELEV 1069 TDZE 1014</p> <p>JENAT SUBIC</p> <p>DARRY</p> <p>RWY29 1.5 NM to RWY29</p> <p>3000</p> <p>4000</p> <p>4000</p> <p>GP 3.00° TCH 58</p> <p>6.1 NM</p> <p>BCN TW'R</p> <p>110°</p> <p>349° x 60°</p> <p>290°</p> <p>289°</p> <p>ASSAULT STRIP</p> <p>H IRL all Rwys REIL Rwys 11, 29</p>																								
<table border="1"> <thead> <tr> <th>CATEGORY</th> <th>A</th> <th>B</th> <th>C</th> <th>D</th> <th>E</th> </tr> </thead> <tbody> <tr> <td>LNAV/VNAV DA*</td> <td colspan="2">1480/60</td> <td>466</td> <td colspan="2">(500-1½)</td> </tr> <tr> <td>LNAV MDA**</td> <td>1520/40</td> <td>506 (500-¾)</td> <td>1520-1¼</td> <td>506</td> <td>(500-1¼)</td> </tr> <tr> <td> CIRCLING***</td> <td>1580-1 511 (600-1)</td> <td>1620-1 551 (600-1)</td> <td>1760-2 691 (700-2)</td> <td>1760-2¼ 691 (700-2¼)</td> <td>1760-2½ 691 (700-2½)</td> </tr> </tbody> </table>	CATEGORY	A	B	C	D	E	LNAV/VNAV DA*	1480/60		466	(500-1½)		LNAV MDA**	1520/40	506 (500-¾)	1520-1¼	506	(500-1¼)	 CIRCLING***	1580-1 511 (600-1)	1620-1 551 (600-1)	1760-2 691 (700-2)	1760-2¼ 691 (700-2¼)	1760-2½ 691 (700-2½)
CATEGORY	A	B	C	D	E																			
LNAV/VNAV DA*	1480/60		466	(500-1½)																				
LNAV MDA**	1520/40	506 (500-¾)	1520-1¼	506	(500-1¼)																			
 CIRCLING***	1580-1 511 (600-1)	1620-1 551 (600-1)	1760-2 691 (700-2)	1760-2¼ 691 (700-2¼)	1760-2½ 691 (700-2½)																			

MARIETTA, GEORGIA

33°55'N - 84°31'W

DOBBINS ARB (KMGE)

Amdt 3 11JUL24

# RNAV (GPS) RWY 29

SE-4, 16 APR 2026 to 14 MAY 2026

SE-4, 16 APR 2026 to 14 MAY 2026