

APP CRS	Rwy Idg	4004
110°	TDZE	382
	Apt Elev	393

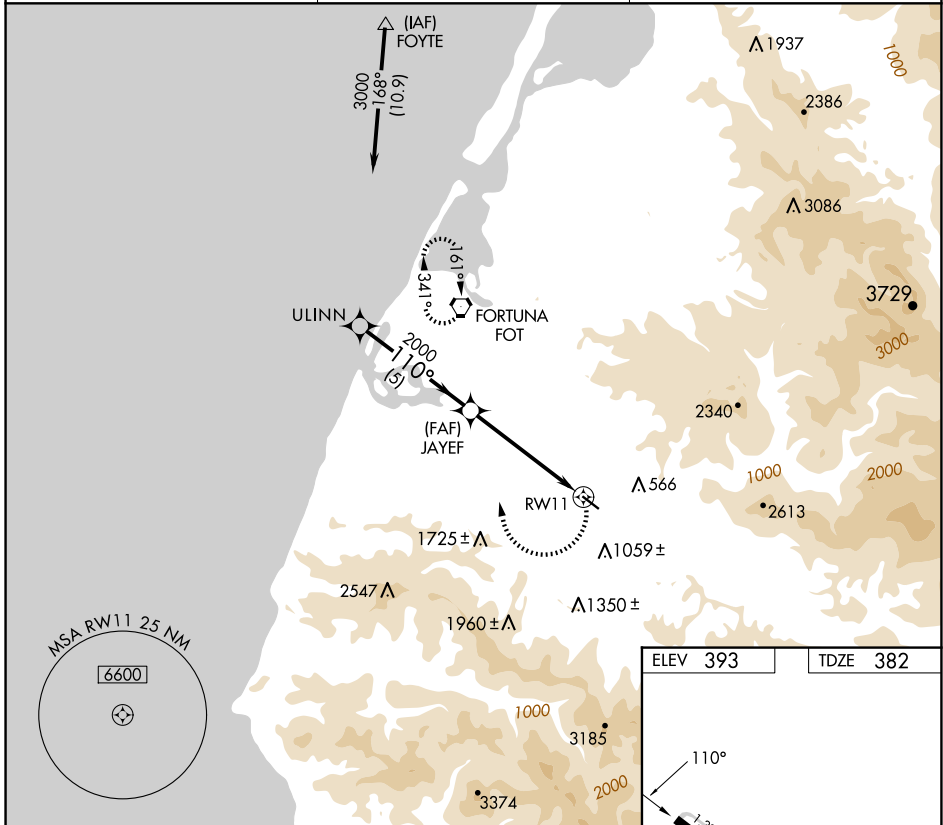
GPS RWY 11

ROHNERVILLE (FOT)

NA When local altimeter setting not received, use Arcata altimeter setting. Circling NA for Cat D north of Rwy 11-29.

MISSED APPROACH: Climbing right turn to 3000 direct FOT VORTAC and hold.

AWOS-3 133.8	SEATTLE CENTER 124.85 306.3	CTAF 122.9
------------------------	---------------------------------------	----------------------



SW-2, 16 APR 2026 to 14 MAY 2026

SW-2, 16 APR 2026 to 14 MAY 2026

ULINN		JAYEF		RWY 11	
3000		2000		3000	
110°				110°	
5 NM		5.1 NM			
CATEGORY	A	B	C	D	
S-11	1140-1 758 (800-1)	1160-1¼ 778 (800-1¼)	1200-2½ 818 (900-2½)	1560-3 1178 (1200-3)	
CIRCLING	1140-1 747 (800-1)	1360-1½ 967 (1000-1½)	1720-3 1327 (1400-3)	1780-3 1387 (1400-3)	

ELEV	393	TDZE	382
------	-----	------	-----