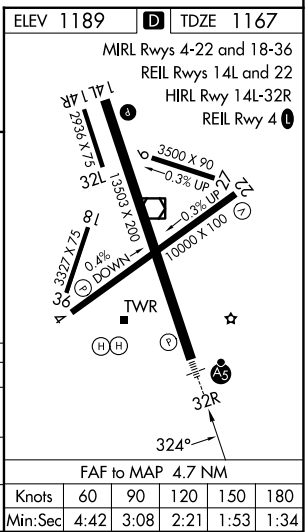
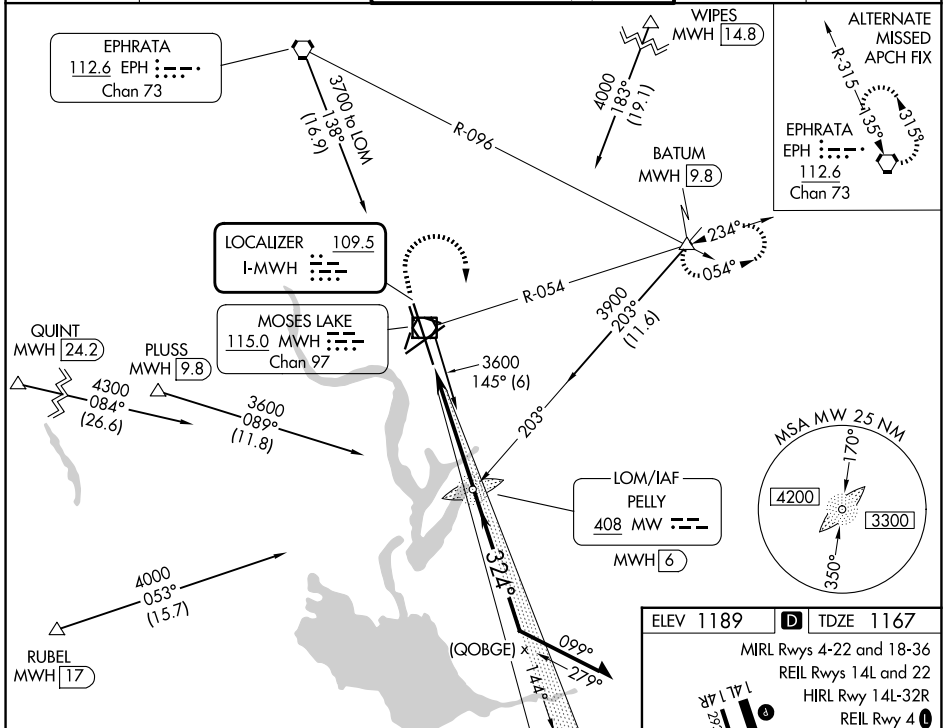


LOC I-MWH <b>109.5</b>	APP CRS <b>324°</b>	Rwy Ldg <b>13492</b> TDZE <b>1167</b> Apt Elev <b>1189</b>
---------------------------	------------------------	--

# ILS or LOC RWY 32R

GRANT COUNTY INTL (MWH)

ADF or DME required.		MALSR 	MISSED APPROACH: Climb to 1800 then climbing right turn to 4000 on MWH R-054 to BATUM INT/MWH VOR/DME 9.8 DME and hold, continue climb-in-hold to 4000.	
ATIS <b>119.05</b>	GRANT COUNTY APP CON * <b>126.4 379.95</b>	GRANT COUNTY TOWER * <b>118.25 (CTAF) 257.8 (E)</b> <b>128.0 257.8 (W)</b>		GND CON <b>121.9</b>
				UNICOM <b>122.95</b>



1800	4000	BATUM	MW LOM PELY	VGSI and ILS glidepath not coincident (VGSI Angle 3.00/TCH 76). Remain within 10 NM
MWH R-054	MWH 1.3	MWH 2.4	MWH 6	2727
				3300
				2800
				GS 3.00° TCH 55
				1.2 NM
				3.6 NM
CATEGORY	A	B	C	D
S-ILS 32R		1367-1/2	200 (200-1/2)	
S-LOC 32R	1620-1/2	453 (500-1/2)	1620-7/8	453 (500-7/8)
CIRCLING	1680-1	491 (500-1)	1720-1 1/2	1840-2
			531 (600-1 1/2)	651 (700-2)

NW-1, 16 APR 2026 to 14 MAY 2026

NW-1, 16 APR 2026 to 14 MAY 2026