

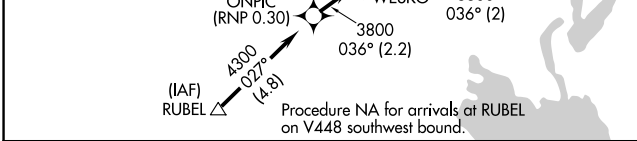
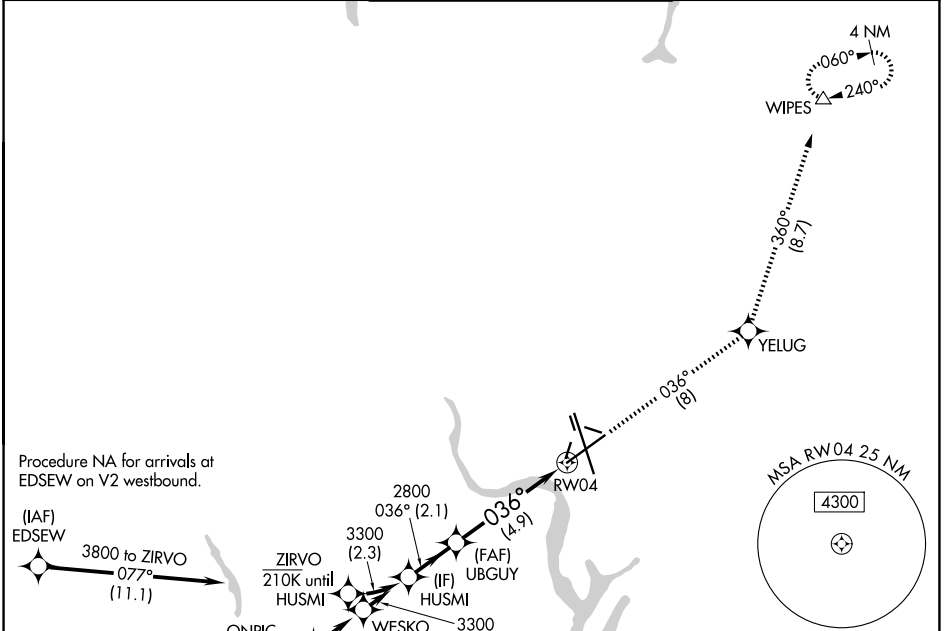
APP CRS	Rwy Ldg	10000
036°	TDZE	1189
	Apt Elev	1189

RNAV (RNP) Z RWY 4

GRANT COUNTY INTL (MWH)

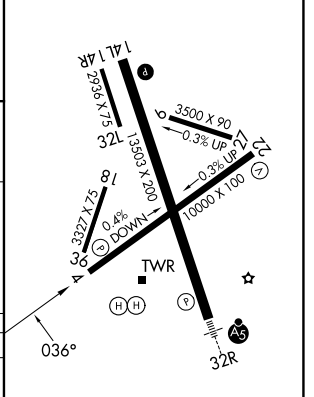
RNP AR APCH-GPS.		MISSED APPROACH: Climb to 4000 on track 036° to YELUG and track 360° to WIPES and hold.	
▼ For uncompensated Baro-VNAV systems, procedure NA below -15°C or above 54°C.			

ATIS 119.05	GRANT COUNTY APP CON * 126.4 379.95	GRANT COUNTY TOWER * 118.25 (CTAF) 0 257.8 (E) 128.0 257.8 (W)	GND CON 121.9	UNICOM 122.95
-----------------------	---	--	-------------------------	-------------------------



HUSMI	4000	YELUG	WIPES
3300	2800	tr 036°	tr 360°
2800	2800		
	2.1 NM	4.9 NM	

ELEV 1189	D	TDZE 1189
-----------	---	-----------



CATEGORY	A	B	C	D
RNP 0.10 DA	1549-1 360 (400-1)			
RNP 0.30 DA	1644-1 3/8 455 (500-1 3/8)			

AUTHORIZATION REQUIRED

REIL Rwy 4
REIL Rws 14L and 22
HIRL Rwy 14L-32R
MIRL Rws 4-22 and 18-36

NW-1, 16 APR 2026 to 14 MAY 2026

NW-1, 16 APR 2026 to 14 MAY 2026