

WAAS CH <b>70410</b> <b>W22A</b>	APP CRS <b>216°</b>	Rwy Ldg <b>10000</b> TDZE <b>1166</b> Apt Elev <b>1189</b>
--	------------------------	--

# RNAV (GPS) Y RWY 22

GRANT COUNTY INTL (MWH)

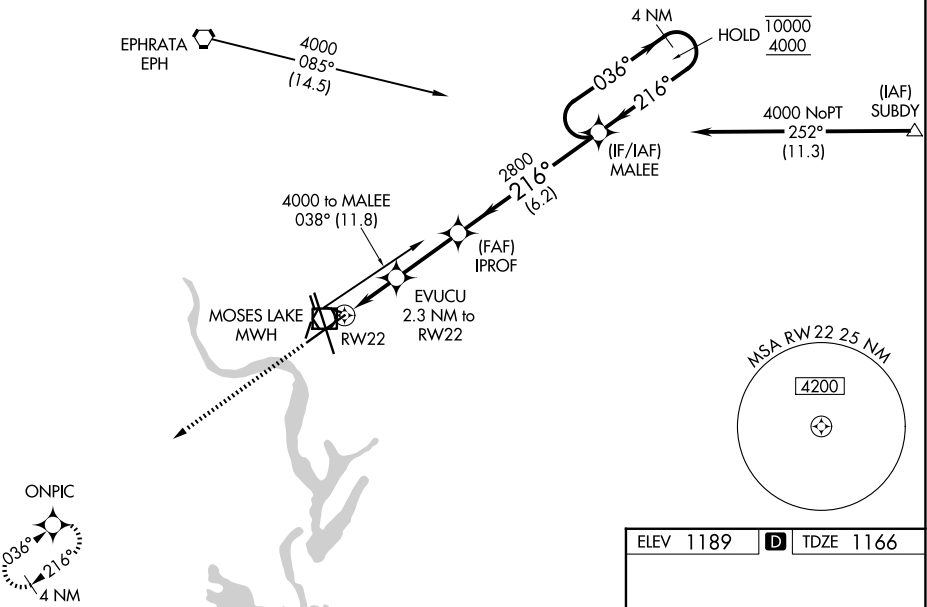
RNP APCH - GPS.

**⚠** For uncompensated Baro-VNAV systems, LNAV/VNAV NA below -17°C or above 54°C. Baro-VNAV and VDP NA when using EPH altimeter setting. Circling Rwy 9, 27, 18, 36 NA at night. When local altimeter setting not received, use EPH altimeter setting and increase LPV DA to 1402 feet; increase LNAV/VNAV DA to 1465 feet; increase all MDAs 40 feet and LNAV visibility Cats C and D ½ SM and Circling visibility Cat D ¼ SM.

**MISSED APPROACH:** Climb to 4000 direct ONPIC and hold, continue climb-in-hold to 4000.

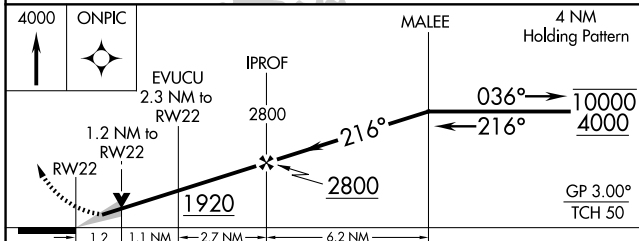
ATIS <b>119.05</b>	GRANT COUNTY APP CON * <b>126.4 379.95</b>	GRANT COUNTY TOWER * <b>118.25 (CTAF) 0 257.8 (E)</b> <b>128.0 257.8 (W)</b>	GND CON <b>121.9</b>	UNICOM <b>122.95</b>
-----------------------	---	--	-------------------------	-------------------------

Procedure NA for arrival on EPH VORTAC  
airway radials 060 CW 135.



NW-1, 16 APR 2026 to 14 MAY 2026

NW-1, 16 APR 2026 to 14 MAY 2026



CATEGORY	A	B	C	D
LPV DA		1366-3/4	200 (200-3/4)	
LNAV/VNAV DA		1429-7/8	263 (300-7/8)	
LNAV MDA	1580-1	414 (400-1)	1580-1 1/8	414 (400-1 1/8)
CIRCLING	1660-1	471 (500-1)	1720-1 1/2 531 (600-1 1/2)	1840-2 651 (700-2)

ELEV 1189 **D** TDZE 1166

REIL Rwy 4 **1**  
REIL Rwy 14L and 22  
HIRL Rwy 14L-32R  
MRL Rwy 4-22 and 18-36